



# Governing Health and Human Services Summit October 9th, 2015



Family & Children  
Services



Housing



Food  
Assistance



Financial  
Assistance



Elder  
Services



Health  
Coverage



Education &  
Skill Building

Hope for the future,  
help when you need it.



BOULDER COUNTY  
**HOUSING  
& HUMAN  
SERVICES**



# Question about Governing HHS

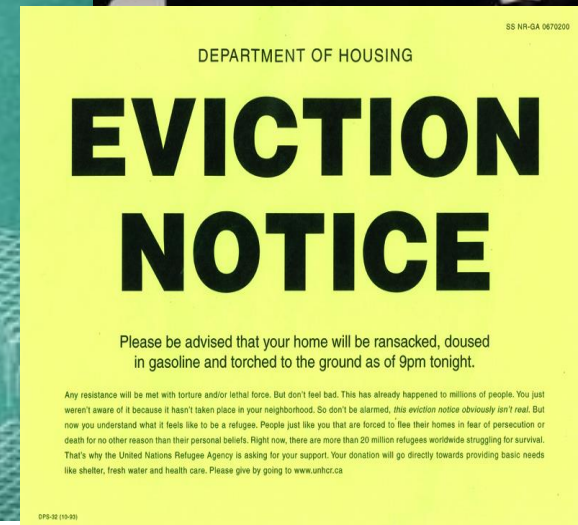
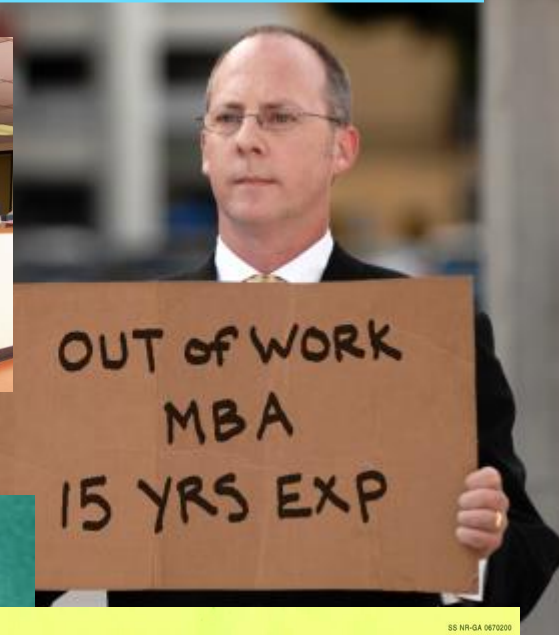


Building Healthy Thriving Communities:  
Opportunities and Next Steps

How can HHS leaders coordinate  
systems integration,  
early intervention, and  
collective impact strategies  
to facilitate a new framework for  
sustainable change?



# The Safety Net Felt a Little.....



Hope for the future, help when you need it.



# And then...the Two Largest Colorado Disasters

Over 10,500 homes  
damaged/destroyed

September 2013



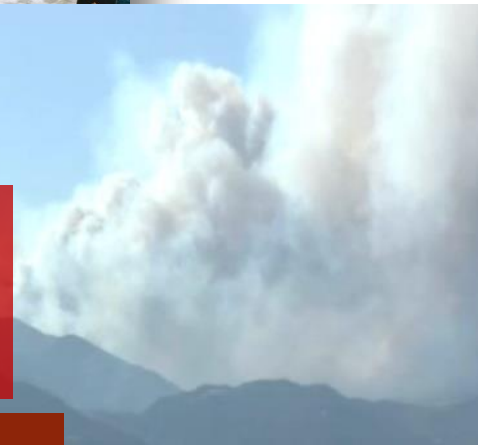
\$2 billion in  
damage to  
infrastructure,  
homes and  
property  
(FEMA)



169 homes  
destroyed



\$217 million in  
damage to homes  
and property



September 2010



BOULDER COUNTY  
**HOUSING  
& HUMAN  
SERVICES**



Hope for the future, help when you need it.

# HHS Service Populations: 3/1/2014 to 3/31/2015

HHS Case Management  
Families  
1,302

CCAP Eligible  
Children  
1,830

Section 8 & Voucher  
Clients  
1,879

Weatherization Families  
413

Affordable Housing  
Clients  
1,522

Cash  
Assistance  
Clients  
4,382

Child  
Welfare  
Referrals  
4,987

FAR Eligible Referrals  
1096

Total Child Involvements  
633

Community Food Share  
Families  
2677

New Child Welfare  
Cases  
170

ACA Enrolled  
Clients  
22,866

LEAP  
Families  
2,713

Food Assistance  
Clients  
29,486

Medical Program Clients  
60,154

Community  
Agency  
Families  
10,487

# Safety Net Collaborative Approach (HSSN)

Invest in families early, before they hit crisis

Strengthen early intervention and prevention

Invest in community-based safety net services

Promote individual and family stabilization

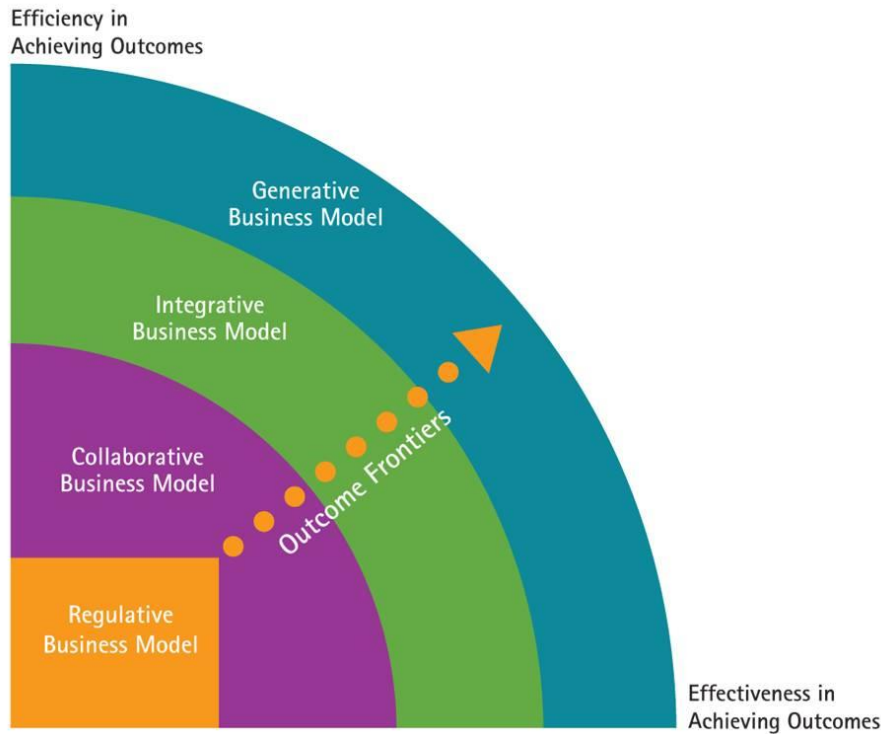


- Expand on our ability to provide **food and financial assistance**
- Extend our ability to help with **housing and rent**
- Increase access to **health care**
- Provide more help for families to access **quality child care**
- Boost **job training** and **employment supports**
- Create and support community-based **Family Resource Centers**
- Increase access to **mental health** and **substance abuse services**



Hope for the future, help when you need it.

# Human Services Value Curve



- In traversing the curve, the enabling business models and competencies of the human services organization mature and improve the organization's ability to deliver broader and more valuable outcomes.



# Transformation across systems

Mental Health  
Public Health  
Education  
Human Services



Hope for the future, help when you need it.



# Social Determinants of Health & Pillars of Family Stability

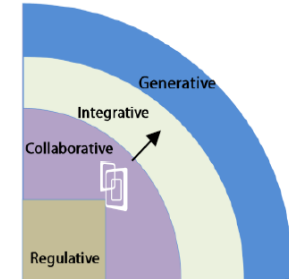




Three circles of the Hedgehog Concept

# BHAG

(Big Hairy Audacious Goal)



***“Within 10 years, we will transform the health and the well-being of our community by shifting programming and funding upstream into prevention oriented and consumer driven cross-sector solutions that improve outcomes across the lifespan and significantly reduce high-cost institutional interventions within a social determinants of health framework.”***

# Target and At-Risk Populations for Investment

**At-Risk Families with  
High Utilization of Child  
Welfare, Homeless and  
other Systems**

**Frequent or High  
Utilizers of Health or  
other Crisis Resources**

**Target  
Populations**

**People Exiting Jail or  
State Prison with Chronic  
Health or MH Conditions**

**Residents of Health Care  
Institutions who Prefer to  
Live in the Community**



Hope for the future, help when you  
need it.



# Boulder County: Community of Hope

## Summit: September 26, 2014



BOULDER COUNTY  
**HOUSING  
& HUMAN  
SERVICES**

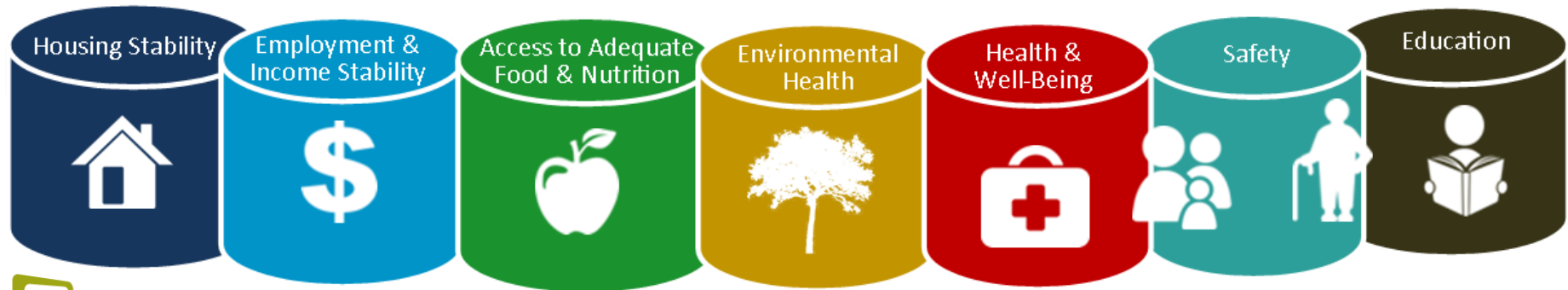


Hope for the future, help when you need it.

Frank

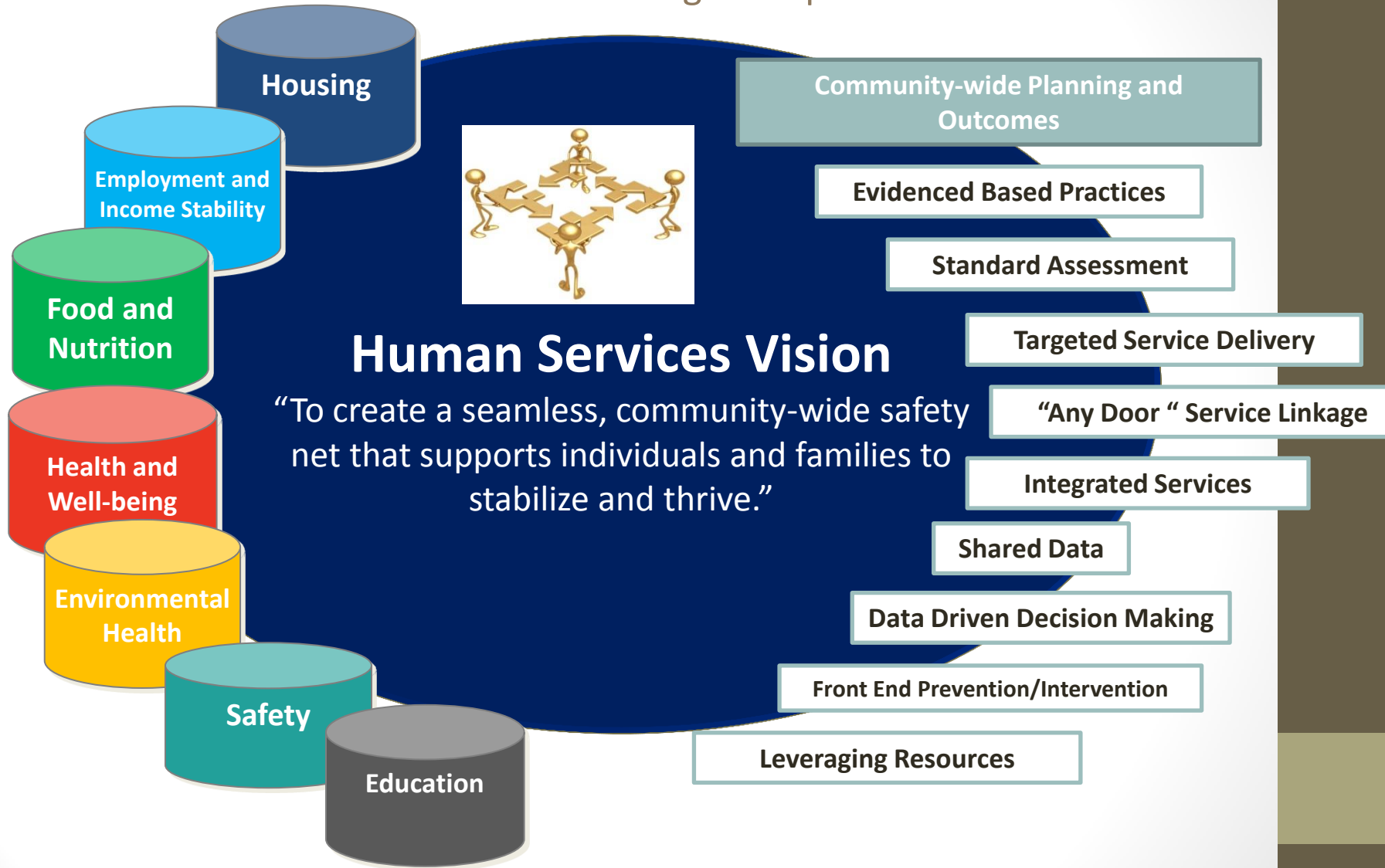
## Building Healthy Thriving Communities

- Constant Feedback Loop
- Continuous Learning Environment
- Common Community Indicators
- Integration of Community Strategic Plans



# Generative Human Services Safety Net:

## Pillars & Guiding Principles





## Building Healthy Thriving Communities: Opportunities and Next Steps

- Develop fiscal and data infrastructure with community
- Reduce cost curve in partner systems
- Develop models for reinvestment
- Support prevention-based activities
- Target resources toward greatest success and cost savings
- Apply disaster/economic crisis scaling lessons
- Develop flexible housing interventions
- Integrate business models to change economic incentives



Hope for the future, help when you need it.



# Resiliency = Design and Scale a Safety Trampoline



Hope for the future, help when you need it.