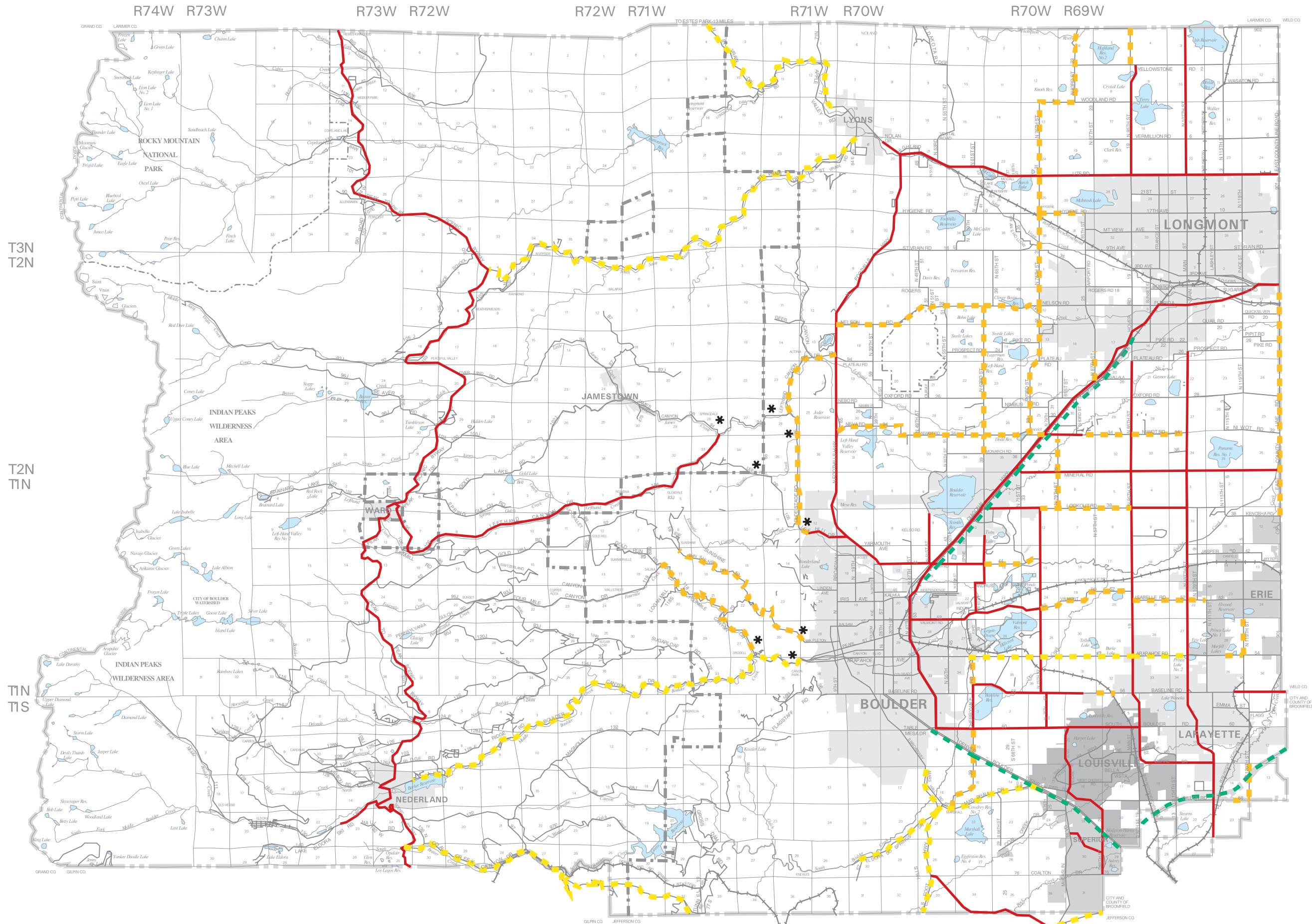


County On-Street Bikeways Plan



Legend

- Roads with Existing Shoulders
- - - Proposed Shoulder-BOCO
- . . . Proposed Shoulder-CDOT
- - - Proposed Separated Bikeway

Incorporated Areas
(As of July 5, 2002)

Notes

- * Uphill climbing lane only.
- Proposed shoulder indicates a minimum of a 4 foot shoulder on plains roads. Shoulder width on mountain roads may vary due to topographic constraints.
- Separate bikeways routes represent conceptual locations and may not represent exact path configuration. Off-road bikeways are referenced from the Boulder County Trails Map within the Boulder Comprehensive Plan (adopted Jan. 1999).

Map scale and reproduction method limit precision in physical features and boundary locations.
PRINTED - JULY 5, 2002

Revisions

- Adopted - Planning Commission - September 4, 2001
- Approved - County Commissioners - September 4, 2001



COMPREHENSIVE PLAN MAP

