

Boulder County Domestic Abuse Prevention Project
Year End Statistical Report: January – December 2003



Susan Ransbottom & Debra Stein
Coordinators

Gisela Libertun
Research Analyst

Teresa Brown
Assistant Research Analyst

Administrative Office

Boulder County Justice Center – Community Justice Services
1777 6th Street ♦ Boulder, Colorado 80306
PO Box 471
Phone: 303.441.4725

Mailing Address

Boulder County Domestic Abuse Prevention Project
P.O. Box 471
Boulder, Colorado 80306

http://www.co.boulder.co.us/cs/cb/dapindex.htm#_top

Questions or Comments may be forwarded to

Susan Ransbottom
303.441.4725
sransbottom@co.boulder.co.us

or

Gisela Libertun
303.441.4888
glibertun@co.boulder.co.us

About the Boulder County Domestic Abuse Prevention Project

Since 1986, the Domestic Abuse Prevention Project (DAPP) has worked to improve the response to intimate partner violence (or domestic violence) in Boulder County. By treating domestic violence as a crime, we strive to raise awareness of the issues to prevent further abuse. The Project is a coordinated effort among law enforcement, the District Attorney's Office, the Judiciary, Community Justice Services, Probation, Private Probation Services, Social Services, battered women's shelters, perpetrator treatment providers and concerned individuals. DAPP acts as a liaison to all involved agencies, monitors the effectiveness of system-wide efforts, and maintains statistics on all reported cases of domestic violence in Boulder County.

Goals of the Project are to:

- Reduce the number of deaths and injuries from domestic violence;
- Increase interdepartmental communication;
- Improve interagency coordination;
- Raise community awareness of intimate partner violence and alternatives to violence; and
- Work with agencies and others to ensure that victims of domestic violence are provided the best possible services.

Acknowledgements

DAPP staff would also like to thank our 2003 Interns and Volunteers: **Jenn Less, Michele Thompson, Solange Reoch, Lindsey Wolf** and **Karen Bender** who helped collect data and generated parts of this report.

DAPP Advisory Board

DAPP's Advisory Board, appointed by the Board of County Commissioners, consists of members from within the criminal justice system as well as agencies and individuals from the community. The Board makes recommendations to the Project staff regarding the status of the Project and any changes needed to improve our community's response to domestic violence. DAPP staff would like to thank the current members of the Advisory Board for their continued support:

Walt Czapran	Boulder Probation (Victim Services)
Karen Tracy	Citizen Representative
Silvia Hast	W.E.A.V.E.
Michael Morrison	Boulder Men's Center
Shane Murphy	Rocky Mountain Offender Management Services
Paula Newcomer	Department of Social Services
Kay Ramachandran	Longmont Coalition for Women in Crisis
Colleen Wilcox	Boulder Police Department
Phil Davis	District Attorney's Office
Anne Tapp	Boulder County Safehouse
Denise Metz	Boulder Probation
Cecilia Wilson	Community Justice Services
Meghan Saleebey	District Attorney's Office (Victim/Witness)
Kim Rietema & Page Frank	Boulder Intervention

DAPP Update

After four years of generous commitment to the Domestic Abuse Prevention Project, our Research Analyst, Jenn Roark, has moved away to pursue new opportunities. Jenn was an incredible asset to the Project, and is responsible for setting up the data collection process on the new database. She also set up the format for the statistical reports. We thank her for her dedication to this work.

DAPP also wants to thank Teresa Brown who has worked very hard for the last three years with the Project. She has been an invaluable asset in the continuity of our statistical reports. She started her internship 3 years ago and continued to volunteer, eventually working as hourly staff and Interim Research Analyst. She will be leaving us in May and will begin her study of law at the University of California, Hastings. We wish her the best and will miss her unique and incredible contribution to DAPP.

Statistical Summary

- **All Case Summary:**
 - For 2003, Boulder County is down 7% from last year in reported (formal and informal) domestic violence cases.
 - Longmont is reporting 47% of the domestic violence cases for Boulder County.
 - This year's double arrest numbers are down by 22% from last year.
 - Informal case numbers are down significantly. DAPP staff is researching the causes of this decrease. We believe this may be due to a combination of staff and database changes; we also hope to clarify individual agency's policies regarding non-charged reports that are sent to DAPP.

- **3 Year Trend by Agency and 3 Year Trend by Formal versus Informal Reports:**
 - This report contains a three-year trend of domestic violence numbers for the individual agencies and formal reports (full custody arrests, warrant arrests, summons, and book and release) versus informal (open reports, incident reports, and outstanding warrants). This should be useful in localizing increases and decreases of domestic violence incidents.

- **Felonies and Misdemeanors:**
 - The ratio of felonies and misdemeanors has fluctuated by one-three percent each year. In 2003 19% of the cases were felonies (down from 22% in 2002) and 77% of the cases were misdemeanors (down from 78% in 2002).

- **Demographics:**
 - Demographics for defendants and victims have not changed significantly during the past three years.
 - The rate of female arrests has remained around 23% (with an increase to 24% in 2001).
 - The majority of defendants and victims are in the age range of 18-29. DAPP rarely receives juvenile (offenders under the age of 18) domestic violence cases because state statute does not require that these cases be labeled as domestic violence. Staff are working with the County's Juvenile Detention Center to increase tracking in 2004. .

- **Incident Information:**
 - In approximately one third of all cases, the defendant and victim are no longer involved in a relationship.
 - In approximately a third of the cases, defendants used alcohol and/or an illegal substance; in approximately one sixth of the cases, victims used alcohol and/or an illegal substance. A slightly smaller portion of the cases (12%) indicated that both the defendant and victim used alcohol and/or an illegal substance.
 - In approximately half of the cases, law enforcement documented offering victim advocate services (by either calling, presenting a brochure, etc.).
 - In a small number of cases, the defendant used a weapon (DAPP defines a weapon as something other than a part of the body used to threaten or harm the victim); in the majority of those cases, defendants used something other than a knife or firearm (telephones, bottles, keys, rocks, baseball bats, etc.).
 - For the last several years, Boulder County law enforcement agencies have been charging felony crimes in strangulation cases (hands can be used as a deadly weapon). Although these numbers are low this year, expect an increase over the next couple of years. If this does happen,

DAPP may change its definition of weapon. (See information above.)

▪ **Children Who Witness:**

- Documentation of children witnessing domestic violence has increased over the last three years. In 2003, 28% (362) of all charged cases included children witnessing the incident. The defendant was charged with child abuse in 51% (184) of these cases. 3% of these cases resulted in a child abuse related conviction.
- Despite this low conviction rate, the actual arrest on child abuse charges allows the system to step in and complete a more intensive review of the status of the children and offer appropriate services as needed. An increased number of dispositions (25% in 2003, up from 1% in the two previous years) mandate the defendant to attend parenting classes.
- In 2003, a total number of 597 children were documented as witnesses to violence in the home.

▪ **Bonds:**

- There was a decrease from 78% to 72% in defendants being held until the two o'clock hearings before posting bond.

▪ **Recidivism and Multiple Victimizations**

- DAPP's definition of recidivism and repeat victimizations only includes domestic violence crimes committed in Boulder County. Please note that DAPP's conversion to the new database allows for tracking recidivism and repeat victimization from 1994, when we developed our first electronic database. DAPP has a goal of converting paper files on cases from 1986 to 1993 to electronic format over the next few years as resources become available.
- For the past three years, recidivism rates have been approximately 30%; additionally, multiple victimization rates have been approximately 29%.

▪ **Disposition Information:**

- In 2003, 68% (669) of convicted offenders were ordered in to domestic violence treatment. Additionally, 23% (229) of convicted offenders are ordered directly to jail or prison; therefore, these offenders are not eligible for treatment. When these prisoners are excluded from the statistics, the percentage of offenders ordered into treatment increases to 91%. DAPP staff continue to review dispositions regarding state mandated treatment.
- 411 (or 31%) of all offenders were documented as using alcohol or drugs at the time of the incident. Of these, 259 (65%) were sentenced to either alcohol or substance abuse treatment.

▪ **15 Year Overview:**

- The 15-year overview includes Broomfield domestic violence cases until the incorporation of Broomfield County (2001). Although it appears that annual numbers are down, this page does not account for the loss of Broomfield cases. Annual numbers of reported cases continues on a slightly upward trend when the Broomfield cases are removed from the data.

Boulder County Domestic Abuse Prevention Project (DAPP)

All Case Summary

Fourth Quarter October - December and Year End for 2003

Total Formal Cases* = 1315 and Total Informal Cases = 427

Law Enforcement Agency	Report (No Charges)		Open (Under Investigation) & Outstanding Warrants		Book & Release		Warrant		Summons		Arrest		Total		Both Parties Charged**	
	Q4	YTD	Q4	YTD	Q4	YTD	Q4	YTD	Q4	YTD	Q4	YTD	Q4	YTD	Q4	YTD
Boulder	13	54	5	19	0	1	2	23	1	2	73	295	94	394	4	23
Boulder Sheriff	0	26	0	0	0	0	2	15	0	1	32	150	34	192	0	8
Longmont	47	227	13	54	1	2	13	88	1	3	93	448	168	822	2	26
Lafayette	1	33	0	2	0	0	2	12	0	1	32	160	35	208	0	11
Louisville	0	0	0	0	0	1	0	7	0	1	12	57	12	66	2	9
University of Colorado	3	6	2	3	0	0	2	3	0	0	3	12	10	24	0	0
Erie	0	1	0	0	0	0	0	0	0	0	2	20	2	21	0	4
Nederland Marshall	0	0	0	2	0	2	1	1	0	0	2	4	3	9	0	0
Ward	0	0	0	0	0	0	0	0	0	0	1	1	1	1	0	0
Other ***	0	0	0	0	0	0	0	1	0	0	2	4	2	5	0	0
Total	64	347	20	80	1	6	22	150	2	8	252	1151	361	1742	8	81
Percent Total	18%	20%	6%	5%	0%	0%	6%	9%	1%	0%	70%	66%	100%	100%	2%	5%

Three Year Trend for Domestic Violence Cases in Boulder County****

	Report (no Charges)	Open (under investigation) & Outstanding Warrants	Book & Release	Warrant	Summons	Arrest	Total	Double Arrest
2003	347	80	6	150	8	1151	1742	81
2002	454	80	5	129	30	1164	1862	99
2001	437	71	13	48	33	1277	1879	152
Percent Change (2003-2002)	-31%	0%	17%	14%	-275%	-1%	-7%	-22%
Percent Change (2002-2001)	4%	11%	-160%	63%	-10%	-10%	-1%	-54%

Table 2

*Formal Cases are defined as full custody arrests, book and release, warrant, and summons. Informal cases are defined as incident reports (no charges), open (cases needing further investigation), and outstanding warrants.

**Normally both parties are charged and arrested which counts as two separate cases. In some double arrest cases defendants were arrested in separate years thus the totals may be odd.

*** Other agencies include: Drug Task Force and Colorado State Patrol.

****Broomfield numbers have been taken out to normalize the percent increase or decrease.

Domestic Violence Incidents: Three Year Trend (2001-2003)

Nederland Police Department, Erie Police Department, and Ward Police Department were not included in this breakdown because of the low number of domestic violence cases reported by these agencies yearly.

Nederland Police responded to: 5 formal domestic violence cases (all full custody arrests) and 1 domestic violence incident report for 2001; 4 formal domestic violence cases (all full custody arrests) for 2002; and 7 formal domestic violence cases (4 full custody arrests, 1 warrant and 2 book and releases) and 2 open domestic violence incidents for 2003. There has been a 20% decrease in formal arrests from 2001 to 2002 and a 43% increase in formal arrests from 2002 to 2003.

Erie Police Department responded to: 17 formal domestic violence cases (all full custody arrests) for 2001; and 15 formal domestic violence cases (13 full custody arrests, 1 book and release, and 1 summons) and 1 domestic violence incident report for 2002; and 20 formal domestic violence cases (all full custody arrests) and 1 domestic violence incident report for 2003. There has been a 12% decrease in formal arrests from 2001 to 2002 and a 33% increase from 2002 to 2003.

Ward responded to no domestic violence cases (formal or incidents) for 2001 and 2002; and 1 domestic violence case (full custody arrest) for 2003. There has been a 100% increase in formal arrests from 2001 and 2002 to 2003.

Individual Law Enforcement Trends

Boulder Police Department

	Report (no charges)	Open (under investigation) & Outstanding Warrants	Book & Release	Warrant	Summons	Arrest	Total	Double Arrest
2003	54	19	1	23	2	295	394	23
2002	61	33	3	18	12	273	400	31
2001	81	19	1	6	17	289	413	56
Percent Change (2002-2003)	-13%	-74%	-200%	22%	-500%	7%	-2%	-35%
Percent Change (2001-2002)	-33%	42%	67%	67%	-42%	-6%	-3%	-81%

Table 3

Boulder County Sheriff's Office

	Report (no charges)	Open (under investigation) & Outstanding Warrants	Book & Release	Warrant	Summons	Arrest	Total	Double Arrest
2003	26	0	0	15	1	150	192	8
2002	53	15	1	23	3	214	309	12
2001	65	19	2	12	2	208	308	12
Percent Change (2002-2003)	-104%	-1500%	-100%	-53%	-200%	-43%	-61%	-14%
Percent Change (2001-2002)	-23%	-27%	-100%	48%	33%	3%	0%	0%

Table 4

Lafayette Police Department

	Report (no charges)	Open (under investigation) & Outstanding Warrants	Book & Release	Warrant	Summons	Arrest	Total	Double Arrest
2003	33	2	0	12	1	160	208	11
2002	84	1	0	7	1	162	255	8
2001	77	17	1	2	4	162	263	22
Percent Change (2002-2003)	-155%	50%	0%	42%	0%	-1%	-23%	27%
Percent Change (2001-2002)	8%	-1600%	-100%	71%	-300%	0%	-3%	-175%

Table 5

Longmont Police Department

	Report (no charges)	Open (under investigation) & Outstanding Warrants	Book & Release	Warrant	Summons	Arrest	Total	Double Arrest
2003	227	54	2	88	3	448	822	26
2002	245	29	0	70	5	431	780	38
2001	202	14	2	26	1	513	758	48
Percent Change (2002-2003)	-8%	46%	200%	20%	-67%	4%	5%	-46%
Percent Change (2001-2002)	18%	52%	-200%	63%	80%	-19%	3%	-26%

Table 6

Louisville Police Department

	Report (no charges)	Open (under investigation) & Outstanding Warrants	Book & Release	Warrant	Summons	Arrest	Total	Double Arrest
2003	0	0	1	7	1	57	66	9
2002	0	0	0	10	2	53	65	2
2001	1	0	7	1	6	66	81	14
Percent Change (2002-2003)	0%	0%	100%	-43%	-100%	7%	2%	78%
Percent Change (2001-2002)	-100%	0%	-700%	90%	-200%	-25%	-25%	-600%

Table 7

University of Colorado Police Department

	Report (no charges)	Open (under investigation) & Outstanding Warrants	Book & Release	Warrant	Summons	Arrest	Total	Double Arrest
2003	6	3	0	3	0	12	24	0
2002	10	2	0	1	6	14	33	2
2001	11	2	0	0	3	14	30	0
Percent Change (2002-2003)	-67%	33%	0%	67%	-600%	-17%	-38%	-200%
Percent Change (2001-2002)	-10%	0%	0%	-200%	50%	0%	9%	-200%

Table 8

Domestic Violence Incidents: Three Year Trend (2001-2003)

Formal versus Informal Report Trends

2001

	Boulder PD	Boulder County Sheriff's Office	Lafayette PD	Longmont PD	Louisville PD	University of Colorado PD	Other Law Enforcement Agencies	Total
Informal Reports (Reports, Open, and Outstanding Warrants)	100	84	94	216	1	13	1	509
Formal Reports (Arrest, Book and Release, Summons, and Warrant)	313	224	169	542	80	17	26	1371

Table 9

2002

	Boulder PD	Boulder County Sheriff's Office	Lafayette PD	Longmont PD	Louisville PD	University of Colorado PD	Other Law Enforcement Agencies	Total
Informal Reports (Reports, Open, and Outstanding Warrants)	94	68	85	274	0	12	1	534
Informal Percent Change (2001-2002)	-6%	-24%	-11%	21%	-100%	-8%	0%	5%
Formal Reports (Arrest, Book and Release, Summons, and Warrant)	306	241	170	506	65	21	19	1328
Formal Percent Change (2001-2002)	-2%	7%	1%	-7%	-23%	19%	-37%	-3%

Table 10

2003

	Boulder PD	Boulder County Sheriff's Office	Lafayette PD	Longmont PD	Louisville PD	University of Colorado PD	Other Law Enforcement Agencies	Total
Informal Reports (Reports, Open, and Outstanding Warrants)	73	26	35	281	0	9	3	427
Informal Percent Change (2002-2003)	-29%	-162%	-143%	2%	0%	-33%	67%	-25%
Formal Reports (Arrest, Book and Release, Summons, and Warrant)	321	166	173	541	66	15	33	1315
Formal Percent Change (2002-2003)	5%	-45%	2%	6%	2%	-40%	42%	-1%

Table 11

Felony and Misdemeanor Domestic Violence Crimes

Individual Law Enforcement Arrest Rates of Felonies

	2001		2002		2003	
	Number of Cases	Percent of Total Cases	Number of Cases	Percent of Total Cases	Number of Cases	Percent of Total Cases
Boulder PD	59	4%	45	3%	49	4%
BC Sheriff's Office	54	4%	52	4%	31	2%
CU PD	4	0%	4	0%	5	0%
Erie PD	1	0%	4	0%	6	0%
Lafayette PD	48	4%	53	4%	39	3%
Longmont PD	124	9%	121	9%	112	9%
Louisville PD	16	1%	12	1%	10	1%
Nederland PD	0	0%	0	0%	1	0%
Other	3	0%	0	0%	3	0%
Total	309	23%	291	22%	256	19%

Table 12

Individual Law Enforcement Arrest Rates of Misdemeanors

	2001		2002		2003	
	Number of Cases	Percent of Total Cases	Number of Cases	Percent of Total Cases	Number of Cases	Percent of Total Cases
Boulder PD	254	19%	261	20%	272	21%
BC Sheriff's Office	170	12%	189	14%	135	10%
CU PD	13	1%	17	1%	10	1%
Erie PD	16	1%	11	1%	14	1%
Lafayette PD	121	9%	117	9%	134	10%
Longmont PD	418	30%	385	29%	429	33%
Louisville PD	64	5%	53	4%	56	4%
Nederland PD	5	0%	4	0%	6	0%
Other	1	0%	0	0%	3	0%
Total	1062	77%	1037	78%	1059	81%

Table 13

Individual Law Enforcement Arrest Rates of Felonies for First Time Offenders and Recidivists*

	2001		2002		2003	
	First Time Offenders	Recidivists	First Time Offenders	Recidivists	First Time Offenders	Recidivists
Boulder PD	44	15	33	12	34	15
BC Sheriff's Office	37	17	34	18	19	12
CU PD	4	0	4	0	5	0
Erie PD	0	1	3	1	5	1
Lafayette PD	30	18	33	20	31	8
Longmont PD	69	55	71	50	68	44
Louisville PD	8	8	9	3	6	4
Nederland PD	0	0	0	0	0	1
Other	1	2	0	0	2	1
Total	193	116	187	104	170	86

Table 14

Individual Law Enforcement Arrest Rates of Misdemeanors for First Time Offenders and Recidivists*

	2001		2002		2003	
	First Time Offenders	Recidivists	First Time Offenders	Recidivists	First Time Offenders	Recidivists
Boulder PD	199	55	207	54	210	62
BC Sheriff's Office	111	59	133	56	105	30
CU PD	11	2	16	1	9	1
Erie PD	16	0	10	1	12	2
Lafayette PD	99	22	86	31	84	50
Longmont PD	300	118	267	118	282	147
Louisville PD	41	23	39	14	41	15
Nederland PD	4	1	4	0	3	3
Other	1	0	0	0	3	0
Total	782	280	762	275	749	310

Table 15

*Recidivists are defendants with a prior **domestic violence** offense in Boulder County (criminal histories outside of Boulder County are unavailable). These formal contacts are arrests (including warrants), summonses, and book and releases. Recidivism is based on information collected by the Domestic Abuse Prevention Project since 1994, when data collection began. DAPP recidivist statistics include both technical violations (e.g., violation of restraining order, bond conditions, etc.) and "new" domestic violence incidents.

Demographics

Sex of Defendant

	2001				2002				2003			
	Male	Percent of Agency Cases	Female	Percent of Agency Cases	Male	Percent of Agency Cases	Female	Percent of Agency Cases	Male	Percent of Agency Cases	Female	Percent of Agency Cases
Boulder PD	221	71%	92	29%	228	75%	78	25%	246	77%	75	23%
BC Sheriff's Office	174	78%	50	22%	187	78%	54	22%	128	77%	38	23%
CU PD	17	100%	0	0%	17	81%	4	19%	15	100%	0	0%
Erie PD	13	76%	4	24%	13	87%	2	13%	16	80%	4	20%
Lafayette PD	131	78%	38	22%	136	80%	34	20%	143	83%	30	17%
Longmont PD	428	79%	114	21%	403	80%	103	20%	407	75%	133	25%
Louisville PD	54	68%	26	33%	54	83%	11	17%	50	76%	16	24%
Nederland PD	5	100%	0	0%	3	75%	1	25%	6	100%	1	17%
Ward	0	100%	0	100%	0	100%	0	100%	1	100%	0	0%
Other	4	100%	0	0%	0	0%	0	0%	6	100%	0	0%
Total	1047	76%	324	24%	1041	78%	287	22%	1018	78%	297	23%

Table 16

Age of Defendant

	2001			2002			2003		
	Male	Female	Percent of Cases	Male	Female	Percent of Cases	Male	Female	Percent of Cases
< 18	23	18	3%	12	5	1%	18	6	2%
18-24	271	115	28%	243	79	24%	270	80	27%
25-29	212	46	19%	190	50	18%	162	49	16%
30-34	136	35	12%	177	49	17%	168	36	16%
35-39	157	47	15%	170	39	16%	126	38	12%
40-44	121	40	12%	115	38	12%	109	46	12%
45-49	71	15	6%	68	16	6%	76	30	8%
>50	56	8	5%	66	11	6%	89	12	8%
Total	1047	324	100%	1041	287	100%	1018	297	100%

Table 17

Age of Victim

	2001			2002			2003		
	Male	Female	Percent of Cases	Male	Female	Percent of Cases	Male	Female	Percent of Cases
< 18	6	48	4%	3	48	4%	5	64	5%
18-24	97	308	30%	61	258	24%	69	290	27%
25-29	47	151	14%	48	160	16%	40	142	14%
30-34	43	130	13%	40	171	16%	37	131	13%
35-39	44	113	11%	41	131	13%	40	125	13%
40-44	36	117	11%	36	100	10%	44	119	12%
45-49	20	70	7%	19	46	5%	26	76	8%
>50	16	35	4%	18	42	5%	27	51	6%
Unknown	5	85	7%	15	91	8%	8	21	2%
Total	314	1057	100%	281	1047	100%	296	1019	100%

Table 18

Demographics

Defendant's Highest Level of Education

	2001			2002			2003		
	Male	Female	Percent of Cases	Male	Female	Percent of Cases	Male	Female	Percent of Cases
No Degree	152	42	15%	184	42	17%	192	51	18%
High School Diploma	370	132	38%	350	108	35%	442	126	43%
GED	74	16	7%	81	25	8%	36	8	3%
AA	56	12	5%	33	12	3%	41	14	4%
BA/BS	83	38	9%	101	32	10%	59	37	7%
MA/MS/MB	25	5	2%	25	5	2%	27	9	3%
MD	3	0	0%	1	0	0%	1	0	0%
PHD	5	1	0%	2	2	0%	8	1	1%
Other	7	1	1%	6	1	1%	5	0	0%
Unknown	246	57	23%	241	42	22%	207	51	20%
Total	1021	304	100%	1024	269	100%	1018	297	100%

Table 19

Defendant's Employment Status

	2001			2002			2003		
	Male	Female	Percent of Cases	Male	Female	Percent of Cases	Male	Female	Percent of Cases
Employed	775	205	71%	716	156	66%	669	167	64%
Unemployed	200	98	22%	228	104	25%	187	91	21%
Disabled	0	0	0%	0	0	0%	7	4	1%
Retired	7	2	1%	7	0	1%	4	1	0%
Unknown	65	19	6%	91	27	9%	151	34	14%
Total	1047	324	100%	1042	287	100%	1018	297	100%

Table 20

Defendant's Yearly Income

	2001			2002			2003		
	Male	Female	Percent of Cases	Male	Female	Percent of Cases	Male	Female	Percent of Cases
<5,000	5	6	1%	10	4	1%	8	6	1%
5-9,999	18	22	3%	22	15	3%	18	13	2%
10-14,999	70	29	7%	64	20	6%	52	19	5%
15-24,999	166	38	15%	119	29	11%	82	18	8%
25-34,999	88	10	7%	42	8	4%	33	5	3%
35-49,999	72	21	7%	76	7	6%	46	9	4%
>50,000	61	3	5%	71	6	6%	39	5	3%
Unemployed	198	97	22%	224	99	25%	187	91	21%
Unknown	343	78	32%	396	81	37%	551	133	52%
Total	1021	304	100%	1024	269	100%	1016	299	100%

Table 21

Information about Domestic Violence Formal Incidents

Relationship Between Defendant and Victim

	2001	Percent of Cases	2002	Percent of Cases	2003	Percent of Cases
Common Law Married	44	3%	33	2%	11	1%
Dating	256	19%	225	17%	217	17%
Divorced	49	4%	60	5%	48	4%
Ex-Dating/Living Together	232	17%	272	20%	331	25%
Living Together	300	22%	300	23%	299	23%
Married	365	27%	346	26%	315	24%
Separated	79	6%	74	6%	75	6%
Other	3	0%	0	0%	2	0%
Unknown	43	3%	18	1%	17	1%
Total	1371	100%	1328	100%	1315	100%

Table 22

Who Contacted the Police

	2001	Percent of Cases	2002	Percent of Cases	2003	Percent of Cases
Child	27	2%	21	2%	11	1%
Defendant	76	6%	86	6%	86	7%
Victim	759	55%	778	59%	770	59%
Police*	61	4%	29	2%	37	3%
Other**	300	22%	309	23%	300	23%
Unknown	148	11%	105	8%	111	8%
Total	1371	100%	1328	100%	1315	100%

Table 23

*This represents incidents where police witnessed the domestic in progress or made initial contact with the parties prior to them reporting the incident to the police.

**This represents incidents reported by neighbors, witnesses, other family members, etc.

Defendant's Use of Alcohol and/or an Illegal Substance at the Time of Incident

	2001			2002			2003		
	Male	Female	Percent of Cases	Male	Female	Percent of Cases	Male	Female	Percent of Cases
Boulder PD	103	42	11%	84	35	9%	83	19	8%
BC Sheriff's Office	63	23	6%	57	14	5%	37	9	3%
CU PD	2	0	0%	3	2	0%	5	0	0%
Erie PD	3	0	0%	5	0	0%	5	2	1%
Lafayette PD	43	16	4%	53	9	5%	53	10	5%
Longmont PD	155	43	14%	137	30	13%	106	54	12%
Louisville PD	13	11	2%	12	3	1%	18	6	2%
Nederland PD	2	0	0%	1	0	0%	1	1	0%
Other	0	0	0%	0	0	0%	2	0	0%
Total	384	135	38%	352	93	34%	310	101	31%

Table 24

Victim's Use of Alcohol and/or an Illegal Substance at the Time of Incident

	2001			2002			2003		
	Male	Female	Percent of Cases	Male	Female	Percent of Cases	Male	Female	Percent of Cases
Boulder PD	40	30	5%	39	25	5%	48	17	5%
BC Sheriff's Office	28	13	3%	27	10	3%	12	6	1%
CU PD	0	0	0%	2	0	0%	4	0	0%
Erie PD	0	1	0%	0	0	0%	2	2	0%
Lafayette PD	14	7	2%	12	6	1%	15	4	1%
Longmont PD	45	29	5%	46	25	5%	40	31	5%
Louisville PD	5	7	1%	5	2	1%	12	5	1%
Nederland PD	1	0	0%	0	1	0%	1	0	0%
Total	133	87	16%	131	69	15%	134	65	15%

Table 25

Both Defendant and Victim's Use of Alcohol and/or an Illegal Substance at the Time of Incident

	2001		2002		2003	
	Male & Female	Percent of Cases	Male & Female	Percent of Cases	Male & Female	Percent of Cases
Boulder PD	63	5%	58	4%	53	4%
BC Sheriff's Office	34	2%	30	2%	15	1%
CU PD	0	0%	2	0%	4	0%
Erie PD	0	0%	0	0%	3	0%
Lafayette PD	17	1%	12	1%	17	1%
Longmont PD	61	4%	60	5%	56	4%
Louisville PD	7	1%	6	0%	14	1%
Nederland PD	0	0%	0	0%	1	0%
Total	182	13%	168	13%	163	12%

Table 26

Information about Domestic Violence Formal Incidents

Victim's Advocate Contacted

	2001			2002			2003 *		
	True	False	% in which VA was Contacted	True	False	% in which VA was Contacted	True	False	% in which VA was Contacted
Boulder PD	229	84	73%	185	121	60%	208	82	68%
BC Sheriff's Office	101	123	45%	111	130	46%	43	85	18%
CU PD	11	6	65%	9	12	43%	10	3	48%
Erie PD	1	16	6%	5	10	33%	5	13	33%
Lafayette PD	62	107	37%	48	122	28%	40	91	24%
Longmont PD	255	287	47%	268	138	53%	293	165	58%
Louisville PD	14	66	18%	8	57	12%	12	44	18%
Nederland PD	2	3	40%	1	3	25%	1	3	25%
Other	0	4	0%	0	0	0%	0	5	0%
Total	675	696	49%	635	593	48%	612	491	46%

Table 27

* There are 212 cases with no mention of victim advocate contact.

Weapon Used

	2001			2002			2003		
	Mis-demeanor	Felony	Percent of Cases	Mis-demeanor	Felony	Percent of Cases	Mis-demeanor	Felony	Percent of Cases
Weapon	78	51	9%	54	52	8%	107	61	13%

	Male	Female	Percent of Cases	Male	Female	Percent of Cases	Male	Female	Percent of Cases
	Weapon	86	43	9%	67	39	8%	111	57

Table 28

Type of Weapon Used

	2001		2002		2003	
	Amount	Percent of Cases	Amount	Percent of Cases	Amount	Percent of Cases
Firearm	14	1%	15	1%	28	2%
Knife	30	2%	49	4%	36	3%
Something Else	100	7%	135	10%	122	9%
Total	144	11%	199	15%	186	14%

Table 29

Defendant's Use of Hands as a Deadly Weapon for 2003

	Strangulation at Incident			Defendant Charged with Assault 2 or Felony Menacing			Convicted of Assault 2 or Felony Menacing		
	Male Def	Female Def	Percent of Cases	Male Def	Female Def	Percent of Cases	Male Def	Female Def	Percent of Cases
Boulder PD	18	1	1%	1	0	0%	0	0	0%
BC Sheriff's Office	12	1	1%	4	0	0%	0	0	0%
CU PD	0	0	0%	0	0	0%	0	0	0%
Erie PD	0	0	0%	0	0	0%	0	0	0%
Lafayette PD	12	0	1%	7	0	1%	0	0	0%
Longmont PD	23	0	2%	9	0	1%	0	0	0%
Louisville PD	2	2	0%	1	0	0%	0	0	0%
Nederland PD	0	0	0%	0	0	0%	0	0	0%
Other	1	0	0%	0	0	0%	0	0	0%
Total	68	4	5%	22	0	2%	0	0	0%

Table 30

Children Who Witness Domestic Violence In Boulder County

Actual Number of Children Present in Formal Domestic Violence Cases

Law Enforcement Agency	2001	2002	2003
Boulder PD	87	80	102
Boulder County Sheriff's Office	98	85	67
CU PD	4	5	3
Erie PD	3	6	19
Lafayette PD	99	85	85
Longmont PD	278	235	285
Louisville	25	18	31
Nederland	3	1	2
Other	2	0	3
Total	599	515	597

Table 31

Number of Domestic Violence Cases Involving Children and Child Abuse Arrest Charges

Number of Cases Where Children Were Present & the Defendant was Charged with a Domestic Violence Crime

Number of Cases Where Children were Present & the Defendant was Charged With Child Abuse Crime

Law Enforcement Agency	Number of Cases Where Children Were Present & the Defendant was Charged with a Domestic Violence Crime						Number of Cases Where Children were Present & the Defendant was Charged With Child Abuse Crime					
	2001	Percent of Agency Cases	2002	Percent of Agency Cases	2003	Percent of Agency Cases	2001	Percent of Children Present and Def Charged	2002	Percent of Children Present and Def Charged	2003	Percent of Children Present and Def Charged
Boulder PD	59	19%	53	17%	66	21%	18	31%	36	68%	36	55%
Boulder County Sheriff's Office	65	29%	56	23%	45	27%	36	55%	30	54%	29	64%
CU PD	3	18%	3	14%	2	13%	1	33%	1	33%	1	50%
Erie PD	3	18%	5	33%	11	55%	0	0%	0	0%	6	55%
Lafayette PD	59	35%	53	31%	47	27%	40	68%	32	60%	33	70%
Longmont PD	181	33%	143	28%	168	31%	79	44%	69	48%	76	45%
Louisville	16	20%	13	20%	19	29%	5	31%	6	46%	3	16%
Nederland	2	40%	1	25%	2	29%	0	0%	1	100%	0	0%
Other	2	50%	0	0%	2	40%	0	0%	0	0%	0	0%
Total	390	28%	327	25%	362	28%	179	46%	175	54%	184	51%

Table 32

Bond Information

In 2001, there were **1325** defendants eligible for bond (full custody arrests and warrant arrest). Of those, **1276 (96%)** defendants posted bond and **49 (4%)** defendants did not post bond. In 2002, there were **1293** defendants eligible for bond (full custody arrests and warrant arrest). Of those, **1250 (97%)** defendants posted bond and **43 (3%)** defendants did not post bond. In 2003, there were **1301** defendants eligible for bond (full custody arrests and warrant arrest). Of those, **1172 (90%)** defendants posted bond and **129 (10%)** defendants did not post bond.

In 2001, **872 (563 first time offenders and 309 recidivists)** or **68%** of the defendants that posted bond were held until the two o'clock bond hearings and **404 (347 first time offenders and 57 recidivists)** or **32%** of the defendants that posted bond were not held until the two bond hearings. In 2002, **971 (656 first time offenders and 315 recidivists)** or **78%** of the defendants that posted bond were held until the two o'clock bond hearings and **279 (237 first time offenders and 42 recidivists)** or **22%** of the defendants that posted bond were not held until the two bond hearings. In 2003, **944 (612 first time offenders and 332 recidivists)** or **72%** of the defendants that posted bond were held until the two o'clock bond hearings and **363 (301 first time offenders and 62 recidivists)** or **28%** of the defendants that posted bond were not held until the two bond hearings.

Bond Amount Information

	2001			2002			2003		
	Lowest	Highest	Average	Lowest	Highest	Average	Lowest	Highest	Average
Felonies	\$100	\$500,000	\$10,731	\$500	\$500,000	\$9,381	\$500	\$100,000	\$7,214
Misdemeanors	\$50	\$500,000	\$1,928	\$50	\$50,000	\$1,716	\$50	\$35,000	\$1,716
Male	\$100	\$500,000	\$4,600	\$50	\$500,000	\$4,006	\$50	\$100,000	\$3,085
Female	\$50	\$25,000	\$1,625	\$50	\$10,000	\$1,280	\$50	\$20,000	\$1,459
First Time Offenders	\$50	\$150,000	\$2,574	\$50	\$100,000	\$2,283	\$50	\$100,000	\$2,209
Recidivists	\$100	\$500,000	\$7,252	\$100	\$500,000	\$6,331	\$100	\$100,000	\$4,074

Table 33

Bond Conditions of Defendants Held Until Two O'Clock Hearings (First Time Offenders versus Recidivists)

	2001			2002			2003		
	First Time Offenders	Recidivists	Total	First Time Offenders	Recidivists	Total	First Time Offenders	Recidivists	Total
No Contact	539	301	840 (96%)	623	294	917 (94%)	540	247	787 (83%)
Interim Supervision	166	111	277 (32%)	118	101	219 (23%)	129	77	206 (21%)
No Weapons	39	28	267 (31%)	76	32	108 (11%)	52	19	71 (8%)
Substance Abuse Monitoring	57	37	94 (11%)	104	61	165 (17%)	105	65	170 (18%)
Alcohol Monitoring	205	118	323 (37%)	188	112	300 (31%)	170	81	251 (27%)
Criminal Restraining Order	85	57	142 (16%)	68	43	111 (11%)	56	30	86 (9%)
No Conditions	7	3	10 (1%)	20	12	32 (3%)	17	4	21 (2%)

Table 34

Bond Conditions of Defendants Not Held Until Two O'Clock Hearings (First Time Offenders versus Recidivists)

	2001			2002			2003		
	First Time Offenders	Recidivists	Total	First Time Offenders	Recidivists	Total	First Time Offenders	Recidivists	Total
No Contact	325	47	372 (92%)	220	41	261 (94%)	285	56	341 (94%)
Interim Supervision	16	11	27 (7%)	16	9	25 (9%)	15	3	18 (5%)
No Weapons	30	0	30 (7%)	11	3	14 (5%)	13	9	22 (6%)
Substance Abuse Monitoring	26	0	26 (6%)	3	3	6 (2%)	16	3	19 (5%)
Alcohol Monitoring	58	11	69 (17%)	41	11	52 (19%)	42	9	51 (14%)
Criminal Restraining Order	9	1	10 (2%)	4	3	7 (3%)	5	5	10 (3%)
No Conditions	8	2	10 (2%)	10	1	11 (4%)	6	1	7 (2%)

Table 35

Bond Information

Type of Bond Order (First Time Offenders versus Recidivists)

	2001			2002			2003		
	First Time Offenders	Recidivists	Total	First Time Offenders	Recidivists	Total	First Time Offenders	Recidivists	Total
Cash/Security/Property	439	324	763	462	295	757	374	248	622
Security	421	16	437	354	41	395	79	44	123
Personal Recognizance	16	24	40	54	19	73	386	20	406
Co-Personal Recognizance	31	2	33	23	2	25	17	2	19
Unknown	3	0	3	0	0	0	0	2	2
Total	910	366	1276	893	357	1250	856	316	1172

Table 36

Type of Bond Order and Bond Conditions for 2001

	No Contact	Interim Supervision	No Weapon	Sub Ab Monitoring	Alcohol Monitoring	Criminal Restraining Order
Cash/Security/Property	730	261	63	86	281	135
Security	23	6	2	7	9	2
Personal Recognizance	424	37	25	21	87	16
Co-Personal Recognizance	33	2	7	6	13	1
Total	1210	306	97	120	390	154

Table 37

Type of Bond Order and Bond Conditions for 2002

	No Contact	Interim Supervision	No Weapon	Sub Ab Monitoring	Alcohol Monitoring	Criminal Restraining Order
Cash/Security/Property	728	220	99	148	224	97
Security	79	10	11	8	156	5
Personal Recognizance	349	11	9	36	59	11
Co-Personal Recognizance	22	4	3	5	15	6
Total	1178	245	122	197	454	119

Table 38

Type of Bond Order and Bond Conditions for 2003

	No Contact	Interim Supervision	No Weapon	Sub Ab Monitoring	Alcohol Monitoring	Criminal Restraining Order
Cash/Security/Property	609	180	55	161	200	78
Security	106	16	14	10	28	10
Personal Recognizance	346	27	24	17	70	8
Co-Personal Recognizance	16	1	1	1	3	0
Total	1077	224	94	189	301	96

Table 39

Information about First Time Offenders and Recidivists in Domestic Violence Offenses in Boulder County

First Time Offenders Versus Recidivists

For 2001, of the **1371** formal arrests **975 (71%)** were first time offenders and **396 (29%)** were recidivists or had committed a previous domestic violence crime in Boulder County. Of the 2001 recidivists, **243 (61%)** of the defendants committed their second domestic violence offense and **153 (39%)** of defendants committed their third or more domestic violence offense.

For 2002, of the **1328** formal arrests **949 (71%)** were first time offenders and **379 (29%)** were recidivists or had committed a previous domestic violence crime in Boulder County. Of the 2002 recidivists, **237 (63%)** of the defendants committed their second domestic violence offense and **142 (37%)** of defendants committed their third or more domestic violence offense.

For 2003, of the 1315 formal arrests **919 (70%)** were first time offenders and **396 (30%)** were recidivists or had committed a previous domestic violence crime in Boulder County. Of the 2003 recidivists, **230 (58%)** of the defendants committed their second domestic violence offense and **166 (42%)** of defendants committed their third or more domestic violence offense.

Days Between Reported Domestic Violence Offenses

2001				
Recidivists*	Number of Recidivists	Low Days**	High Days	Average Days
1st & 2nd Offenses	243	0	2596	565
Subsequent Offenses	153	0	2173	292

Table 40

2002				
Recidivists*	Number of Recidivists	Low Days**	High Days	Average Days
1st & 2nd Offenses	237	0	3178	752
Subsequent Offenses	142	0	2561	520

Table 41

2003				
Recidivists*	Number of Recidivists	Low Days**	High Days	Average Days
1st & 2nd Offenses	230	0	3382	870
Subsequent Offenses	166	0	3129	349

Table 42

Recidivists and Number of Days Between Current and Previous Offense

2001				
	Number of Recidivists	Low Days**	High Days	Average Days
Boulder PD	70	0	2596	588
Boulder Sheriff	76	0	2490	423
CU PD	2	1	524	263
Erie PD	1	5	5	5
Lafayette PD	40	0	2246	480
Longmont PD	173	0	2453	443
Louisville PD	31	0	183	370
Nederland PD	1	198	198	198
Other	2	0	341	171

Table 43

2002				
	Number of Recidivists	Low Days**	High Days	Average Days
Boulder PD	66	0	30	863
Boulder Sheriff	74	0	31	591
CU PD	1	53	1	53
Erie PD	2	315	18	1064
Lafayette PD	51	2	29	615
Longmont PD	168	0	32	614
Louisville PD	17	1	20	511
Nederland PD	0	N/A	N/A	N/A
Other	0	N/A	N/A	N/A

Table 44

2003				
	Number of Recidivists	Low Days**	High Days	Average Days
Boulder PD	77	0	3129	523
Boulder Sheriff	42	0	2809	581
CU PD	1	0	0	0
Erie PD	3	350	1935	1020
Lafayette PD	58	1	3129	617
Longmont PD	191	0	3049	562
Louisville PD	19	0	3382	573
Nederland PD	4	79	2237	735
Other	1	2637	2637	2637

Table 45

*Recidivists are defendants with a prior domestic violence offense in Boulder County (criminal histories outside of Boulder County are unavailable). These formal contacts are arrests (including warrants), summonses, and book and releases. Recidivism is based on information collected by the Domestic Abuse Prevention Project since 1994, when electronic data collection began. DAPP recidivist statistics include both technical violations (e.g., violation of restraining order, bond conditions, etc.) and "new" incidents.

**While some recidivists may have many years between offenses, some reoffend on the same day as their initial arrest. This feat may be accomplished, for example, by telephoning the victim from the jail - in violation of bond conditions, temporary protective order, or both.

Information about First Time Victims and Victims in Prior Domestic Violence Offenses in Boulder County

First Time Victims Versus Repeat Victims

For 2001, of the 1371 formal arrests **967 (71%)** were first time victims and **404 (29%)** were prior victims of a domestic violence crime in Boulder County. For 2001, of the prior victims, **223 (55%)** of the victims were victims of a second domestic violence offense and **181 (45%)** of victims were victims of their third or more domestic violence offense.

For 2002, of the 1328 formal arrests **953 (72%)** were first time victims and **375 (28%)** were prior victims of a domestic violence crime in Boulder County. For 2002, of the prior victims, **218 (58%)** of the victims were victims of a second domestic violence offense and **157 (42%)** of victims were victims of their third or more domestic violence offense.

For 2003, of the 1315 formal arrests **932 (71%)** were first time victims and **373 (29%)** were prior victims of a domestic violence crime in Boulder County. For 2003, of the prior victims, **210 (56%)** of the victims were victims of a second domestic violence offense and **163 (44%)** of victims were victims of their third or more domestic violence offense.

Days Between Reported Domestic Violence Victimization

2001

	Number of Victims	Low Days**	High Days	Average Days
1st & 2nd Victimization*	223	0	2668	585
Subsequent Victimization*	181	0	2519	356

Table 46

2002

	Number of Victims	Low Days**	High Days	Average Days
1st & 2nd Victimization*	218	0	3563	761
Subsequent Victimization*	157	0	2676	481

Table 47

2003

	Number of Victims	Low Days**	High Days	Average Days
1st & 2nd Victimization*	213	0	3298	613
Subsequent Victimization*	163	0	2860	432

Table 48

Repeat Victims and Number of Days Between Current and Previous Victimization

2001

	Number of Victims	Low Days**	High Days	Average Days
Boulder PD	73	0	2552	566
Boulder Sheriff	72	0	2657	451
CU PD	2	1	524	263
Erie PD	1	5	5	5
Lafayette PD	43	0	2246	622
Longmont PD	183	0	2668	496
Louisville PD	28	0	1830	336
Nederland PD	0	N/A	N/A	N/A
Other	2	0	341	171

Table 49

2002

	Number of Victims	Low Days**	High Days	Average Days
Boulder PD	62	0	2950	786
Boulder Sheriff	68	0	3563	466
CU PD	1	53	53	53
Erie PD	2	315	1776	1046
Lafayette PD	56	1	3123	650
Longmont PD	166	0	3021	726
Louisville PD	20	11	2709	530
Nederland PD	0	N/A	N/A	N/A
Other	0	N/A	N/A	N/A

Table 50

2003

	Number of Victims	Low Days**	High Days	Average Days
Boulder PD	34	3	2655	485
Boulder Sheriff	15	5	1724	520
CU PD	1	0	0	0
Erie PD	3	1935	2544	2341
Lafayette PD	24	0	2248	437
Longmont PD	82	0	3298	478
Louisville PD	10	0	785	187
Nederland PD	0	N/A	N/A	N/A
Other	0	N/A	N/A	N/A

Table 51

*Victimization are victims of a domestic violence incident with a prior domestic violence victimization in Boulder County (criminal histories outside of Boulder County are unavailable). These contacts are arrests (including warrants), summonses, and book and releases. Victimization is based on information collected by the Domestic Abuse Prevention Project since 1994, when electronic data collection began. DAPP victimization statistics include both technical violations (e.g., violation of restraining order, bond conditions, etc.) and "new" incidents.

**While some victims may have many years between incidents, some are revictimized on the same day as their initial victimization. For instance, the defendant may, for example, telephone the victim from the jail - in violation of bond conditions, temporary protective order, or both.

Disposition Information ~ Female/Male Comparison

Female/Male Comparison 2001

Total Convictions = 1115 Total Dismissals = 332

There were 1447 cases with disposition for 2001. 343 (24%) female defendants and 1104 (76%) male defendants. Sentencing was as follows:

	Number of Sentences		Percent of Total Sentences		Low (Days)		High (Days)		Average Sentence Length (Days)	
	Female	Male	Female	Male	Female	Male	Female	Male	Female	Male
Deferred Prosecution*	0	1	0%	0%	0	365	0	365	0	365
<i>Deferred Sentence</i>	151	327	44%	29%	90	90	730	1460	461	550
<i>Probation</i>	65	431	19%	39%	180	90	1460	3650	597	655
<i>Jail</i>	52	372	15%	34%	1	1	1095	5475	63	149
<i>Dismissed</i>	87	148	25%	13%	N/A	N/A	N/A	N/A	N/A	N/A
<i>Dismissed w/plea bargain</i>	16	84	5%	8%	N/A	N/A	N/A	N/A	N/A	N/A
<i>Dismissed Warrant Expired</i>	0	5	0%	0%	N/A	N/A	N/A	N/A	N/A	N/A
Total**	371	1368	108%	124%						

Table 52

Female/Male Comparison 2002

Total Convictions = 1011 Total Dismissals = 324

There were 1335 cases with disposition for 2002. 310 (23%) female defendants and 1025 (77%) male defendants. Sentencing was as follows:

	Number of Sentences		Percent of Total Sentences		Low (Days)		High (Days)		Average Sentence Length (Days)	
	Female	Male	Female	Male	Female	Male	Female	Male	Female	Male
Deferred Prosecution*	5	1	2%	0%	180	730	540	730	326	730
<i>Deferred Sentence</i>	118	273	38%	27%	120	150	1095	2190	510	577
<i>Probation</i>	58	363	19%	35%	180	180	730	14600	587	725
<i>Jail</i>	36	329	12%	32%	2	1	2190	4380	140	167
<i>Dismissed</i>	84	146	27%	14%	N/A	N/A	N/A	N/A	N/A	N/A
<i>Dismissed w/plea bargain</i>	14	65	5%	6%	N/A	N/A	N/A	N/A	N/A	N/A
<i>Dismissed Warrant Expired</i>	1	14	0%	1%	N/A	N/A	N/A	N/A	N/A	N/A
Total**	316	1191	102%	116%						

Table 53

Female/Male Comparison 2003

Total Convictions = 981 Total Dismissals = 392

There were 1373 cases with disposition for 2003. 284 (21%) female defendants and 1089 (79%) male defendants. Sentencing was as follows:

	Number of Sentences		Percent of Total Sentences		Low (Days)		High (Days)		Average Sentence Length (Days)	
	Female	Male	Female	Male	Female	Male	Female	Male	Female	Male
Deferred Prosecution*	0	2	0%	0%	0	365	0	540	0	452
<i>Deferred Sentence</i>	101	277	34%	28%	180	180	730	1460	476	505
<i>Probation</i>	51	392	17%	40%	90	180	1460	3600	545	640
<i>Jail</i>	24	730	8%	74%	2	2	270	730	66	98
<i>Dismissed</i>	96	198	32%	20%	N/A	N/A	N/A	N/A	N/A	N/A
<i>Dismissed w/plea bargain</i>	17	76	6%	8%	N/A	N/A	N/A	N/A	N/A	N/A
<i>Dismissed Warrant Expired</i>	1	3	0%	0%	N/A	N/A	N/A	N/A	N/A	N/A
Total**	290	1678	97%	170%						

Table 54

*Colorado State Law prohibits deferred prosecutions in domestic violence cases; however, they are still occasionally given to DV defendants in Boulder County.

**Total number of sentences handed down by the courts. Some defendants receive multiple sanctions; therefore, number of sentences may not equal number of individuals.

Disposition Information ~ Double Arrest

Double Arrest Female/Male Comparison 2001

Total Convictions = 111 Total Dismissals = 39

There were 150 cases with disposition for 2001. 82 (55%) female defendants and 65 (45%) male defendants. Sentencing was as follows:

	<i>Number of Sentences</i>		<i>Percent of Total Sentences</i>		<i>Low (Days)</i>		<i>High (Days)</i>		<i>Average Sentence Length (Days)</i>	
	Female	Male	Female	Male	Female	Male	Female	Male	Female	Male
<i>Deferred Prosecution</i>	0	0	0%	0%	0	0	0	0	0	0
<i>Deferred Sentence</i>	33	32	40%	49%	90	365	730	730	495	511
<i>Probation</i>	10	22	12%	34%	270	90	730	730	572	569
<i>Jail</i>	9	16	11%	25%	1	1	120	180	29	36
<i>Dismissed</i>	16	14	20%	22%	N/A	N/A	N/A	N/A	N/A	N/A
<i>Dismissed w/plea bargain</i>	4	2	5%	3%	N/A	N/A	N/A	N/A	N/A	N/A
Total**	72	86	88%	132%						

Table 55

Double Arrest Female/Male Comparison 2002

Total Convictions = 60 Total Dismissals = 50

There were 110 cases with disposition for 2002. 63 (57%) female defendants and 47 (43%) male defendants. Sentencing was as follows:

	<i>Number of Sentences</i>		<i>Percent of Total Sentences</i>		<i>Low (Days)</i>		<i>High (Days)</i>		<i>Average Sentence Length (Days)</i>	
	Female	Male	Female	Male	Female	Male	Female	Male	Female	Male
<i>Deferred Prosecution*</i>	1	0	2%	0%	365	0	365	0	365	0
<i>Deferred Sentence</i>	18	18	29%	38%	730	365	730	365	521	514
<i>Probation</i>	4	9	6%	19%	365	90	730	730	500	688
<i>Jail</i>	3	7	5%	15%	21	1	120	150	27	41
<i>Dismissed</i>	28	17	44%	36%	N/A	N/A	N/A	N/A	N/A	N/A
<i>Dismissed w/plea bargain</i>	3	2	5%	4%	N/A	N/A	N/A	N/A	N/A	N/A
Total**	57	53	90%	113%						

Table 56

Double Arrest Female/Male Comparison 2003

Total Convictions = 67 Total Dismissals = 32

There were 97 cases with disposition for 2003. 47 (48%) female defendants and 50 (52%) male defendants. Sentencing was as follows:

	<i>Number of Sentences</i>		<i>Percent of Total Sentences</i>		<i>Low (Days)</i>		<i>High (Days)</i>		<i>Average Sentence Length (Days)</i>	
	Female	Male	Female	Male	Female	Male	Female	Male	Female	Male
<i>Deferred Prosecution</i>	0	0	0%	0%	0	0	0	0	0	0
<i>Deferred Sentence</i>	19	19	40%	38%	335	365	730	730	504	449
<i>Probation</i>	7	14	15%	28%	365	180	730	730	467	557
<i>Jail</i>	1	7	2%	14%	11	2	11	100	11	44
<i>Dismissed</i>	16	11	34%	22%	N/A	N/A	N/A	N/A	N/A	N/A
<i>Dismissed w/plea bargain</i>	2	3	4%	6%	N/A	N/A	N/A	N/A	N/A	N/A
Total**	45	54	96%	108%						

Table 57

*Colorado State Law prohibits deferred prosecutions in domestic violence cases; however, they are still occasionally given to DV defendants in Boulder County.

**Total number of sentences handed down by the courts. Some defendants receive multiple sanctions; therefore, number of sentences may not equal number of individuals.

Disposition Information ~ First Time Offenders

First Time Offenders 2001

Total Convictions = **852** Total Dismissals = **227**

There were **1079** cases with disposition for 2001. **278 (26%)** female defendants and **801 (74%)** male defendants. Sentencing was as follows:

	<i>Number of Sentences</i>		<i>Percent of Total Sentences</i>		<i>Low (Days)</i>		<i>High (Days)</i>		<i>Average Sentence Length (Days)</i>	
	Female	Male	Female	Male	Female	Male	Female	Male	Female	Male
Deferred Prosecution*	0	1	0%	0%	0	365	0	365	0	365
<i>Deferred Sentence</i>	146	305	53%	38%	90	90	730	1460	458	541
<i>Probation</i>	44	300	16%	38%	180	90	1095	3650	564	645
<i>Jail</i>	29	198	10%	25%	1	1	2190	2190	148	99
<i>Dismissed</i>	70	114	25%	14%	N/A	N/A	N/A	N/A	N/A	N/A
<i>Dismissed w/plea bargain</i>	6	34	2%	4%	N/A	N/A	N/A	N/A	N/A	N/A
<i>Dismissed Warrant Expired</i>	0	3	0%	0%	N/A	N/A	N/A	N/A	N/A	N/A
Total**	295	955	106%	120%						

Table 59

First Time Offenders 2002

Total Convictions = **749** Total Dismissals = **189**

There were **938** cases with disposition for 2000. **242 (26%)** female defendants and **696 (74%)** male defendants. Sentencing was as follows:

	<i>Number of Sentences</i>		<i>Percent of Total Sentences</i>		<i>Low (Days)</i>		<i>High (Days)</i>		<i>Average Sentence Length (Days)</i>	
	Female	Male	Female	Male	Female	Male	Female	Male	Female	Male
Deferred Prosecution*	5	0	2%	0%	180	0	540	0	326	0
<i>Deferred Sentence</i>	115	261	48%	38%	120	150	1095	1460	505	568
<i>Probation</i>	32	240	13%	34%	180	180	730	14600	534	720
<i>Jail</i>	16	167	7%	24%	2	1	730	4380	77	153
<i>Dismissed</i>	65	100	27%	14%	N/A	N/A	N/A	N/A	N/A	N/A
<i>Dismissed w/plea bargain</i>	3	10	1%	1%	N/A	N/A	N/A	N/A	N/A	N/A
<i>Dismissed Warrant Expired</i>	1	10	0%	1%	N/A	N/A	N/A	N/A	N/A	N/A
Total**	237	788	98%	112%						

Table 60

First Time Offenders 2003

Total Convictions = **722** Total Dismissals = **259**

There were **945** cases with disposition for 2003. **219 (23%)** female defendants and **726 (77%)** male defendants. Sentencing was as follows:

	<i>Number of Sentences</i>		<i>Percent of Total Sentences</i>		<i>Low (Days)</i>		<i>High (Days)</i>		<i>Average Sentence Length (Days)</i>	
	Female	Male	Female	Male	Female	Male	Female	Male	Female	Male
Deferred Prosecution*	0	2	0%	0%	0	365	0	540	0	452
<i>Deferred Sentence</i>	98	252	45%	35%	180	180	730	1460	471	522
<i>Probation</i>	31	242	14%	33%	90	24	1460	1460	505	609
<i>Jail</i>	8	89	4%	12%	2	2	60	365	44	70
<i>Dismissed</i>	79	148	36%	20%	N/A	N/A	N/A	N/A	N/A	N/A
<i>Dismissed w/plea bargain</i>	2	27	1%	4%	N/A	N/A	N/A	N/A	N/A	N/A
<i>Dismissed Warrant Expired</i>	0	3	0%	0%	N/A	N/A	N/A	N/A	N/A	N/A
Total**	218	763	100%	105%						

Table 58

*Colorado State Law **prohibits** deferred prosecutions in domestic violence cases; however, they are still occasionally given to DV defendants in Boulder County.

**Total number of sentences handed down by the courts. Some defendants receive multiple sanctions; therefore, number of sentences may not equal number of individuals.

Disposition Information ~ Recidivists

Recidivists 2001

Total Convictions = **263** Total Dismissals = **113**

There were **376** cases with disposition for 2001. **67 (18%)** female defendants and **309 (82%)** male defendants. Sentencing was as follows:

	<i>Number of Sentences</i>		<i>Percent of Total Sentences</i>		<i>Low (Days)</i>		<i>High (Days)</i>		<i>Average Sentence Length (Days)</i>	
	Female	Male	Female	Male	Female	Male	Female	Male	Female	Male
<i>Deferred Prosecution</i>	0	0	0%	0%	0	0	0	0	0	0
<i>Deferred Sentence</i>	5	23	7%	7%	365	180	730	1460	546	666
<i>Probation</i>	21	131	31%	42%	365	180	1460	1825	667	677
<i>Jail</i>	25	174	37%	56%	2	60	180	5475	47	207
<i>Dismissed</i>	17	34	25%	11%	N/A	N/A	N/A	N/A	N/A	N/A
<i>Dismissed w/plea bargain</i>	10	50	15%	16%	N/A	N/A	N/A	N/A	N/A	N/A
<i>Dismissed Warrant Expired</i>	0	2	0%	1%	N/A	N/A	N/A	N/A	N/A	N/A
Total**	78	414	116%	133%						

Table 62

Recidivists 2002

Total Convictions = **262** Total Dismissals = **135**

There were **397** cases with disposition for 2002. **58 (15%)** female defendants and **329 (83%)** male defendants. Sentencing was as follows:

	<i>Number of Sentences</i>		<i>Percent of Total Sentences</i>		<i>Low (Days)</i>		<i>High (Days)</i>		<i>Average Sentence Length (Days)</i>	
	Female	Male	Female	Male	Female	Male	Female	Male	Female	Male
<i>Deferred Prosecution*</i>	0	1	0%	0%	0	730	0	730	0	730
<i>Deferred Sentence</i>	4	13	7%	4%	365	365	730	2190	639	757
<i>Probation</i>	26	123	45%	37%	365	180	730	3650	651	735
<i>Jail</i>	20	164	34%	50%	7	90	2190	3650	192	180
<i>Dismissed</i>	19	46	33%	14%	N/A	N/A	N/A	N/A	N/A	N/A
<i>Dismissed w/plea bargain</i>	11	55	19%	17%	N/A	N/A	N/A	N/A	N/A	N/A
<i>Dismissed Warrant Expired</i>	0	4	0%	1%	N/A	N/A	N/A	N/A	N/A	N/A
Total**	80	406	138%	123%						

Table 63

Recidivists 2003

Total Convictions = **316** Total Dismissals = **132**

There were **428** cases with disposition for 2003. **65 (15%)** female defendants and **363 (85%)** male defendants. Sentencing was as follows:

	<i>Number of Sentences</i>		<i>Percent of Total Sentences</i>		<i>Low (Days)</i>		<i>High (Days)</i>		<i>Average Sentence Length (Days)</i>	
	Female	Male	Female	Male	Female	Male	Female	Male	Female	Male
<i>Deferred Prosecution</i>	0	0	0%	0%	0	0	0	0	0	0
<i>Deferred Sentence</i>	3	25	5%	7%	335	180	730	730	598	520
<i>Probation</i>	20	150	31%	41%	90	180	730	3600	607	693
<i>Jail</i>	16	102	25%	28%	4	2	270	720	143	123
<i>Dismissed</i>	17	50	26%	14%	N/A	N/A	N/A	N/A	N/A	N/A
<i>Dismissed w/plea bargain</i>	15	50	23%	14%	N/A	N/A	N/A	N/A	N/A	N/A
Total**	71	377	109%	104%						

Table 61

*Colorado State Law **prohibits** deferred prosecutions in domestic violence cases; however, they are still occasionally given to DV defendants in Boulder County.

**Total number of sentences handed down by the courts. Some defendants receive multiple sanctions; therefore, number of sentences may not equal number of individuals.

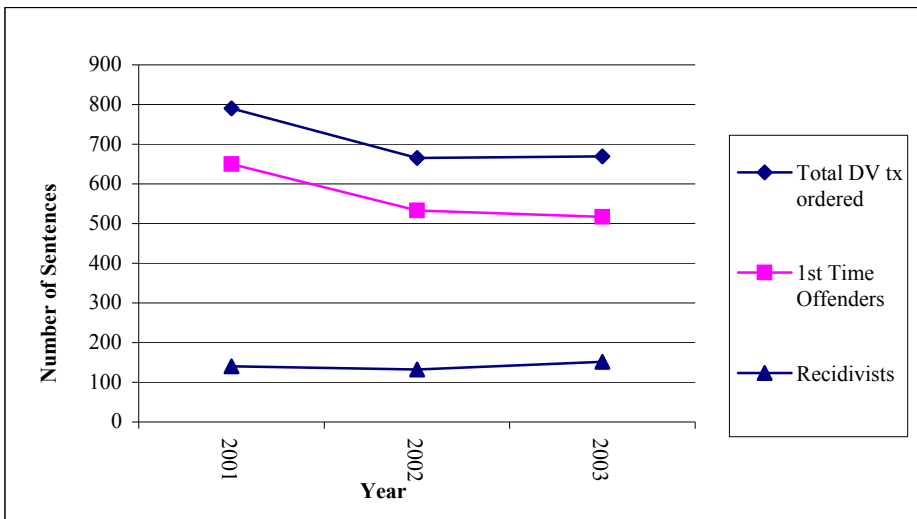
Disposition Information ~ Court Ordered Treatment

36 Week Domestic Violence Treatment Ordered

In 2001, **790 (71% of total convictions)** offenders were sentenced to dv treatment; of these **209 (19%)** were sentenced to jail. **650** were first time offenders and **140** were recidivists.

In 2002, **665 (66% of total convictions)** offenders were sentenced to dv treatment; of these **199 (20%)** were sentenced to jail. **533** were first time offenders and **132** were recidivists.

In 2003, **669 (68% of total convictions)** offenders were sentenced to dv treatment; of these **229 (23%)** were sentenced to jail. **517** were first time offenders and **152** were recidivists.



Mental Health, Anger Management, and Alcohol/Substance Abuse Treatment Ordered*

In 2001, **86** offenders were sentenced to mental health tx. For 2002, **83** offenders were sentenced to mental health tx. For 2003, **93** offenders were sentenced to mental health tx.

In 2001, **31** offenders were sentenced to anger management tx. For 2002, **36** offenders were sentenced to anger management tx. For 2003, **20** offenders were sentenced to anger management tx.

In 2001, **428** cases with dispositions the defendant used alcohol or an illegal substance. Of those cases, **260 (61%)** offenders were sentenced to either alcohol or substance abuse treatment.

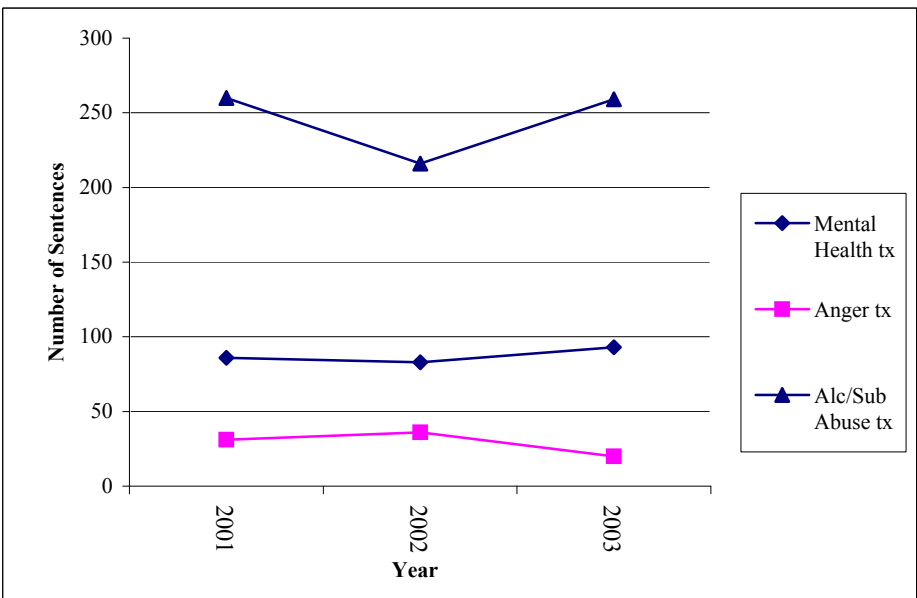


Figure 2

In 2002, **340** cases with dispositions the defendant used alcohol or an illegal substance. Of those cases, **216 (64%)** offenders were sentenced to either alcohol or substance abuse treatment.

In 2003, **411** cases with dispositions the defendant used alcohol or an illegal substance. Of those cases, **259 (65%)** offenders were sentenced to either alcohol or substance abuse treatment.

*These conditions may be in addition to state mandated 36 week court ordered treatment

Disposition Information ~ Charging and Disposition Information Regarding Children

In 2001, **429 (30%)** of cases with dispositions involved children. Of those, **170 (40%)** of the defendants were charged with child abuse and **18 (11% of defendants charged)** defendants were convicted of a child abuse charge.

In 2002, **341 (26%)** of cases with dispositions involved children. Of those, **154 (45%)** of the defendants were charged with child abuse and **9 (6% of defendants charged)** defendants were convicted of a child abuse charge.

In 2003, **384 (34%)** of cases with dispositions involved children. Of those, **184 (48%)** of the defendants were charged with child abuse and **15 (3% of defendants charged)** defendants were convicted of a child abuse charge.

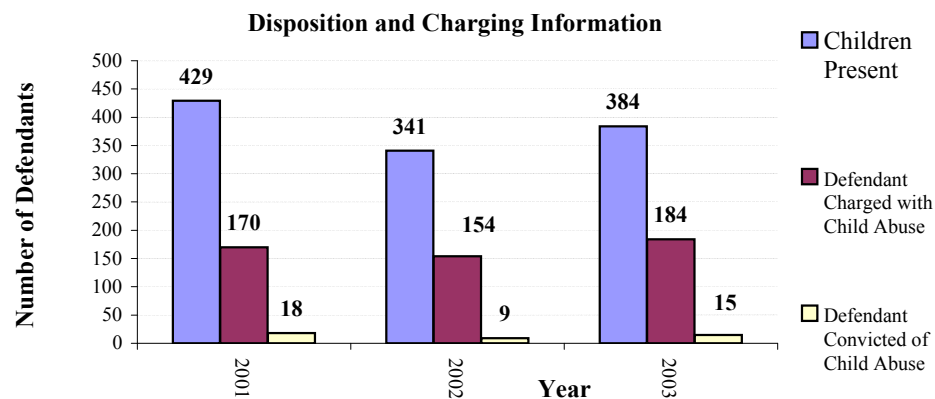


Figure 3

In 2001, **159 (14% of total convictions)** of defendants were sentenced to cooperate with the Department of Social Services and **13 (1% of total convictions)** defendants were sentenced to parenting classes as a condition of their disposition.

In 2002, **87 (9% of total convictions)** of defendants were sentenced to cooperate with the Department of Social Services and **13 (1% of total convictions)** defendants were sentenced to parenting classes as a condition of their disposition.

In 2003, **117 (10% of total convictions)** of defendants were sentenced to cooperate with the Department of Social Services and **29 (25% of total convictions)** defendants were sentenced to parenting classes as a condition of their disposition.

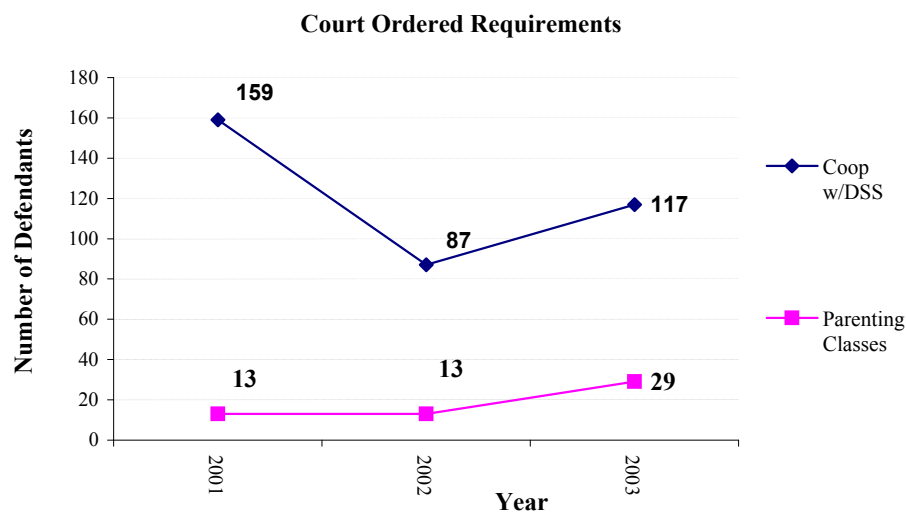
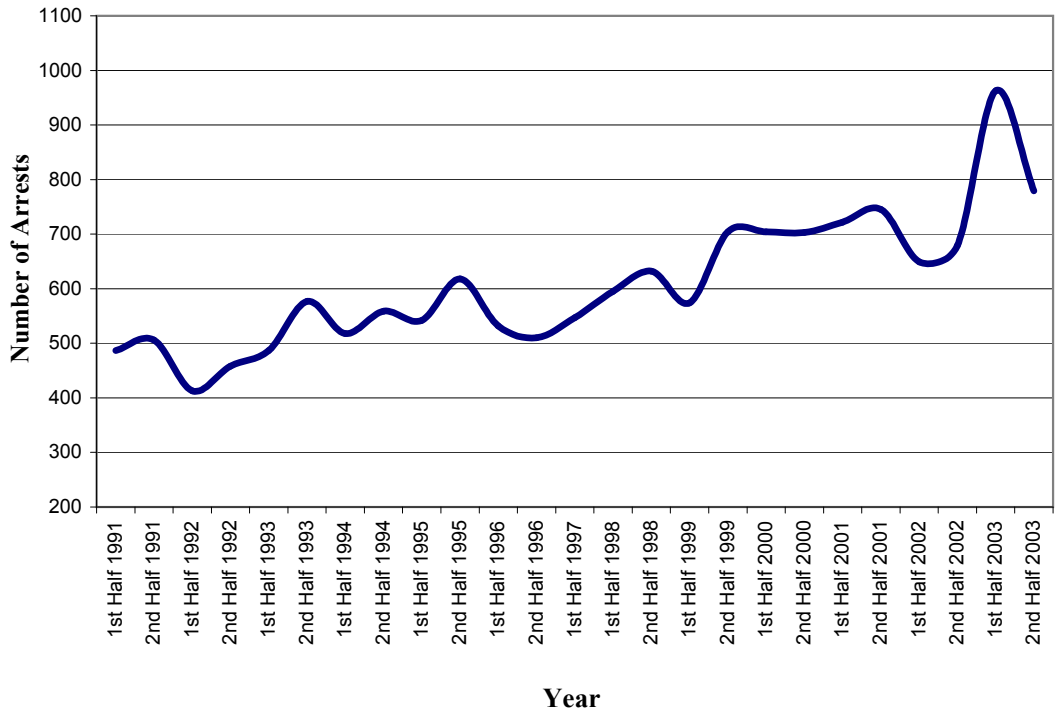


Figure 4

**These statistics reveal cases that had dispositions within the respective annual periods.

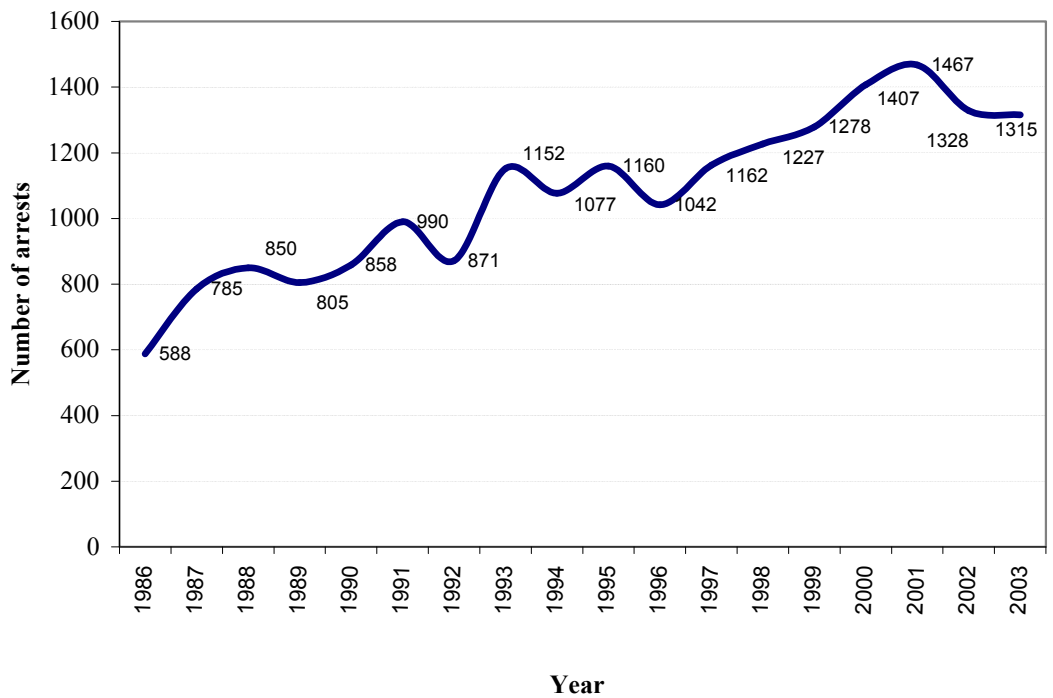
15 Year Overview of Boulder County Domestic Violence Arrest Rate*

**Boulder County Bi-Annual Domestic Violence Arrest Trend
1991 - 2003**



	# Arrests	Percent Change
1st Half 1991	487	
2nd Half 1991	506	4%
1st Half 1992	413	-18%
2nd Half 1992	458	11%
1st Half 1993	487	6%
2nd Half 1993	577	18%
1st Half 1994	518	-10%
2nd Half 1994	559	8%
1st Half 1995	542	-3%
2nd Half 1995	618	14%
1st Half 1996	532	-14%
2nd Half 1996	510	-4%
1st Half 1997	547	7%
2nd Half 1997	615	12%
1st Half 1998	595	-3%
2nd Half 1998	632	6%
1st Half 1999	574	-9%
2nd Half 1999	704	23%
1st Half 2000	704	0%
2nd Half 2000	703	0%
1st Half 2001	722	3%
2nd Half 2001	745	3%
1st Half 2002	649	-13%
2nd Half 2002	679	5%
1st Half 2003	963	42%
2nd Half 2003	779	

**Boulder County Annual Domestic Violence Arrest Trend
1986 - 2003**



*Broomfield Law Enforcement Domestic Violence Numbers are included for the bi-annual and annual totals.