

Boulder County Domestic Abuse Prevention Project
Year End Statistical Report: January – December 2006



Susan Ransbottom & Debra Stein
Coordinators

Gisela Libertun
Research Analyst

Administrative Office

Boulder County Justice Center – Community Justice Services
1777 6th Street ♦ Boulder, Colorado 80306
PO Box 471
Phone: 303.441.4725

Mailing Address

Boulder County Domestic Abuse Prevention Project
P.O. Box 471
Boulder, Colorado 80306

<http://www.domesticviolence-bouldercounty.org>

Questions or Comments may be forwarded to

Susan Ransbottom
303.441.4725
sransbottom@co.boulder.co.us

or

Debra Stein
303.441.3664
dstein@co.boulder.co.us

Gisela Libertun
303.441.4888
glibertun@co.boulder.co.us

About the Boulder County Domestic Abuse Prevention Project

Since 1986, the Domestic Abuse Prevention Project (DAPP) has worked to improve the response to intimate partner violence (or domestic violence) in Boulder County. By treating domestic violence as a crime, we strive to raise awareness of the issues to prevent further abuse. The Project is a coordinated effort among law enforcement, the District Attorney's Office, the Judiciary, Community Justice Services, Probation, Private Probation Services, Social Services, battered women's shelters, perpetrator treatment providers and concerned individuals. DAPP acts as a liaison to all involved agencies, monitors the effectiveness of system-wide efforts, and maintains statistics on all reported cases of domestic violence in Boulder County.

Goals of the Project are to:

- Reduce the number of deaths and injuries from domestic violence;
- Increase interdepartmental communication;
- Improve interagency coordination;
- Raise community awareness of intimate partner violence and alternatives to violence; and
- Work with agencies and others to ensure that victims of domestic violence are provided the best possible services.

Acknowledgements

DAPP staff would also like to thank our 2006-2007 Hourly Staff: **Christy Estoll** and **Wendy Firth**, Interns and Volunteers: **Elyse Maranjian, Sierra Hill, Beth Ann Fricker, Cassandra Wilusz, Katy Meek, Lauren Boesel, Justyna Wojtach, Brittany Sims, Tiphany Rigaudias** and **Jamesy Owen** who helped collect data and generated parts of this report.

DAPP Advisory Board

DAPP's Advisory Board, appointed by the Board of County Commissioners, consists of members from within the criminal justice system as well as agencies and individuals from the community. The Board makes recommendations to the Project staff regarding the status of the Project and any changes needed to improve our community's response to domestic violence. DAPP staff would like to thank the current members of the Advisory Board for their continued support:

Walt Czapan	Boulder Probation (Victim Services)
Jackie Warrilow	Citizen Representative
Silvia Hast	W.E.A.V.E.
Michael Morrison	Boulder Men's Center
Mark Pape	Rocky Mountain Offender Management Services
Paula Newcomer	Department of Social Services
Liz Smokowski	Safe Shelter of St. Vrain Valley
Colleen Wilcox	Boulder Police Department
Carolyn Roberts	Boulder County Sheriff's Office
Anne Tapp	Safehouse Progressive Alliance for Nonviolence
Monica Galbraith	Boulder Probation
Whitney Fraley	Longmont Probation
Cecilia Wilson	Community Justice Services
Rob Shapiro	District Attorney's Office
Shannon Freeman	District Attorney's Office (Victim/Witness)
Cheryl Telck	Boulder Intervention
Chris Harbison	Boulder Community Hospital
Marsha Caplan	Voices for Children
Sandie Taylor, Longmont PD	Longmont Police Department

DAPP Update: This report is reaching you much later than anticipated due to several changes in our data collection process. The State Court database changed last summer and the new system requires additional steps (and much more time) to collect information. The District Attorney's Office changed their database and access policy last July, which significantly impacted our data collection procedures. Our thanks to Jim Atherton of the District Attorney's Office's, who has worked with our Research Analyst to create reports that replace the data formerly collected via their system. Although delayed, DAPP staff is confident in the quality and reliability of the data in the 2006 annual report.

Statistical Summary

- **All Boulder County Case Summary:**
 - In 2006, Boulder County law enforcement reported an **11% decrease** in cases (formal and informal) from the previous year. Arrest rates are down **12%** throughout the county.
 - Longmont is reporting **37%** of the formal domestic violence cases for Boulder County.
 - This year's double arrest numbers are down by **29%** from last year (a total of 68 cases in 2006 compared to 96 cases in 2005). **6%** of total charged cases were double arrests.
 - Informal case numbers are down **15%**. DAPP staff has worked closely with staff from law enforcement records departments throughout the county to gather information on informal cases. We thank all the officers, detectives, and records departments' staff who that helped us obtain these non-charged reports.

- **3 Year Trend by Agency, including Formal and Informal Reports:**
 - This report contains a three-year comparison of domestic violence numbers for individual law enforcement agencies in Boulder County. It also includes information on the number of formal reports (full custody arrests, warrant arrests, summons, and book and release) and informal (open reports, incident reports, and outstanding warrants). This should be useful in localizing increases and decreases of domestic violence incidents throughout the county.

- **Felonies and Misdemeanors:**
 - The ratio of felonies and misdemeanors has fluctuated by five percent in the last two years. In 2006, **28%** of the cases were felonies (up from 23% in 2004 and 27% from 2005) and **72%** of the cases were misdemeanors (down from 77% in 2004 and 73% from 2005).

- **Demographics:**
 - Demographics for defendants and victims have not changed significantly during the past three years.
 - The rate of female arrests has decreased to **20%** from **24%** in 2005 and **22%** in 2004.
 - The majority of defendants and victims are in the age range of 18-29 years old (almost **50%** of the defendants and victims). DAPP rarely receives juvenile cases (offenders under the age of 18) because they are not commonly labeled as domestic violence. DAPP is working with criminal justice agencies to determine how to identify and respond to Domestic Violence juvenile cases.

- **Incident Information:**
 - In more than one third of all cases, the defendant and victim are no longer involved in a relationship.
 - The use of alcohol and/or an illegal substance at the time of the incident increased significantly in the past three years. In **40 %** of the cases, defendants used alcohol and/or an illegal substance; in **18 %** of the cases, victims used alcohol and/or an illegal substance. A slightly smaller portion of the cases (**15%**) indicated that both the defendant and victim used alcohol and/or an illegal substance.
 - In **80%** of the cases, law enforcement reports indicated that victim advocate services (by either calling, presenting a brochure, etc.) were offered at the time of the incident. This statistic has increased in the past years due to the help DAPP receives from the victim advocates agencies.
 - In **11%** of the cases, the defendant used a weapon. DAPP defines a weapon as something other than a part of the body used to threaten or harm the victim. In the majority of those cases, defendants used something other than a knife or firearm (telephones, bottles, keys, rocks, baseball bats, etc.). There is one exception to this definition: when "hands" are used for strangulation. In 2006, 6% of the cases (in addition to the 11% noted above) involved hands used as a deadly weapon. See page 9, table 30, for more information on strangulation.

- **Children Who Witness:**
 - Documentation of children witnessing domestic violence has increased over the years. In 2006, **28% (322)** of all charged cases included children witnessing the incident. The defendant was charged with child abuse in **53% (171)** of these cases.
 - The actual arrest on child abuse charges allows the system to step in and complete a more intensive assessment of the status of the children and offer appropriate services as needed. An increased number of dispositions mandate the defendant to attend parenting classes.
 - In 2006, a total number of **568** children were documented as present in a domestic violence incident. From those, **411 (72%)** children witnessed incident of violence in the home

- **Bonds:**
 - In 2006, **72 %** of defendants did, and **28%** of defendants did not, post bond prior to disposition. In the last few years DAPP staff changed the system of collecting data for the bond information. While this system is more labor intensive, we believe it is more reliable and that the numbers for 2004, 2005 and 2006 are a more accurate representation of bonds posted prior to disposition of the criminal case.
 - In 2004, the 20th Judicial District made the decision that all defendants arrested for a domestic violence-related charge be held until they are seen by a judge or magistrate in open court. This brings our judicial district into compliance with state statute §18-1-1001(5), which mandates that all domestic violence offenders are advised by a judge of the Criminal Protection Order (CPO) placed on them for the duration of their case. No domestic violence arrestee will be eligible for release prior to seeing a judge. Given these changes, DAPP no longer reports information on defendants held for a bond hearing.

- **Recidivism and Multiple Victimitizations**
 - DAPP's definition of recidivism and repeat victimizations includes only domestic violence crimes committed in Boulder County. Please note that DAPP's conversion to the new database allows for tracking recidivism and repeat victimization starting in 1994, when we developed our first electronic database. DAPP maintains hard copies of case information from 1986 to 1993, but currently does not have the resources to enter these into our database.
 - For the past three years, recidivism rates have been approximately **30%**; additionally, multiple victimization (individuals who have been victimized 2 or more times) rates have remained at **28%**.

- **Disposition Information:**
 - In 2006, **73%** of the defendants were convicted and **27%** were dismissed.
 - **63% (541)** of convicted offenders were ordered to complete state mandated domestic violence treatment. **41% (391)** of convicted offenders were ordered directly to jail or prison. Since state mandated treatment is not available in the Boulder County jail, these offenders can not attend treatment. DAPP staff continue to review dispositions regarding state mandated treatment.
 - **466** of all offenders were documented as using alcohol or drugs at the time of the incident. Of these, **247 (53%)** were sentenced to either alcohol or substance abuse treatment as an additional component of their sentence.

- **15 Year Overview:**
 - The 15-year overview includes Broomfield domestic violence cases until the incorporation of Broomfield County (2001). Although it appears that annual numbers are up, this page does not account for the loss of Broomfield cases. Annual numbers of reported cases continue on a slightly upward trend when the Broomfield cases are removed from the data.

Boulder County Domestic Abuse Prevention Project (DAPP)

All Case Summary

Fourth Quarter October - December and Year End for 2006

Total Formal Cases* = 1135 and Total Informal Cases = 489

Law Enforcement Agency	Report (No Charges)		Open (Under Investigation) & Outstanding Warrants		Book & Release		Warrant		Summons		Arrest		Total		Both Parties Charged**	
	Q4	YTD	Q4	YTD	Q4	YTD	Q4	YTD	Q4	YTD	Q4	YTD	Q4	YTD	Q4	YTD
Boulder	16	55	5	34	0	0	7	50	0	0	63	284	91	423	10	26
Boulder Sheriff	2	10	2	17	0	1	8	25	1	1	25	133	38	187	2	4
Longmont	53	187	9	27	0	0	16	83	0	0	76	323	154	620	4	12
Lafayette	17	66	5	14	0	0	2	16	0	0	22	100	46	196	2	8
Louisville	19	67	1	7	0	0	0	7	0	1	12	50	32	132	4	14
University of Colorado	1	2	0	1	0	0	1	8	0	0	5	19	7	30	2	2
Erie	0	1	0	0	0	0	0	1	0	0	5	12	5	14	0	0
Nederland Marshall	0	1	0	0	0	0	1	2	0	0	4	8	5	11	0	2
Ward	0	0	0	0	0	0	0	0	0	0	0	0	0	0	0	0
Other ***	0	0	0	0	0	0	0	6	0	0	1	5	1	11	0	0
Total	108	389	22	100	0	1	35	198	1	2	213	934	379	1624	24	68
Percent Total	28%	24%	6%	6%	0%	0%	9%	12%	0%	0%	56%	58%	100%	100%	10%	6%

Three Year Trend for Domestic Violence Cases in Boulder County

	Report (no Charges)	Open (under investigation) & Outstanding Warrants	Book & Release	Warrant	Summons	Arrest	Total	Double Arrest
2006	389	100	1	198	2	934	1624	68
2005	455	101	0	201	2	1066	1825	96
2004	421	83	2	162	6	977	1651	102
Percent Change (2006-2005)	-15%	-1%	N/A	-1%	0%	-12%	-11%	-29%
Percent Change (2005-2004)	8%	22%	N/A	24%	-67%	9%	11%	-6%

Table 2

*Formal Cases are defined as full custody arrests, book and release, warrant, and summons. Informal cases are defined as incident reports (no charges), open (cases needing further investigation), and outstanding warrants.

**Normally both parties are charged and arrested which counts as two separate cases. In some double arrest cases, defendants were arrested in separate years, thus the totals may be odd numbers.

*** Other agencies include: the county's Drug Task Force, Colorado State Patrol and the District Attorney's Office.

Domestic Violence Incidents: Three Year Trend (2004-2006)

Nederland, Erie and Ward Police Departments were not included in the following tables because of the low number of domestic violence cases reported by these agencies yearly.

Nederland Police responded to: 7 formal domestic violence cases (all full custody arrests) for 2004; 6 formal domestic violence cases (4 full custody arrests and 2 warrants) and 2 open domestic violence incidents for 2005; and 10 formal domestic violence cases (8 full custody arrests and 2 warrants) and 1 domestic violence incident report for 2006. There has been 14% decrease in formal arrest from 2004 to 2005 and 67% increase in formal arrests from 2005 to 2006.

Erie Police responded to: 18 formal domestic violence cases (16 full custody arrests and 2 warrants) and 1 domestic violence incident report for 2004; 12 formal domestic violence cases (all full custody arrests) and 1 domestic violence incident report for 2005; and 13 formal domestic violence cases (12 full custody arrests and 1 warrant) and 1 domestic violence incident report for 2006. There has been a 33% decrease from 2004 to 2005 and a 8% increase from 2005 to 2006.

Ward Police responded to no domestic violence cases in 2004, 2005 and 2006. There has been no change from 2004, 2005 and 2006.

Individual Law Enforcement Trends

Boulder Police Department

	Report (no charges)	Open (under investigation) & Outstanding Warrants	Book & Release	Warrant	Summons	Arrest	Total	Double Arrest
2006	55	34	0	50	0	284	423	26
2005	52	15	0	49	1	305	422	40
2004	67	17	0	30	2	251	367	32
Percent Change (2005-2006)	6%	127%	N/A	2%	-100%	-7%	0%	-35%
Percent Change (2004-2005)	-22%	-12%	N/A	63%	-50%	22%	15%	25%

Table 3

Boulder County Sheriff's Office

	Report (no charges)	Open (under investigation) & Outstanding Warrants	Book & Release	Warrant	Summons	Arrest	Total	Double Arrest
2006	10	17	1	25	1	133	187	4
2005	26	27	0	28	0	147	228	6
2004	12	18	0	20	1	123	174	8
Percent Change (2005-2006)	-62%	-37%	N/A	-11%	N/A	-10%	-18%	-33%
Percent Change (2004-2005)	117%	N/A	N/A	40%	-100%	20%	31%	-25%

Table 4

Lafayette Police Department

	Report (no charges)	Open (under investigation) & Outstanding Warrants	Book & Release	Warrant	Summons	Arrest	Total	Double Arrest
2006	66	14	0	16	0	100	196	8
2005	69	11	0	12	1	121	214	6
2004	94	13	2	7	2	135	253	16
Percent Change (2005-2006)	-4%	27%	N/A	33%	-100%	-17%	-8%	33%
Percent Change (2004-2005)	-27%	-15%	N/A	71%	-50%	-10%	-15%	-63%

Table 5

Longmont Police Department

	Report (no charges)	Open (under investigation) & Outstanding Warrants	Book & Release	Warrant	Summons	Arrest	Total	Double Arrest
2006	187	27	0	83	0	323	620	12
2005	224	37	0	89	0	396	746	28
2004	200	30	0	91	0	358	679	22
Percent Change (2005-2006)	-17%	-27%	N/A	-7%	N/A	-18%	-17%	-57%
Percent Change (2004-2005)	12%	23%	N/A	-2%	N/A	11%	10%	27%

Table 6

Louisville Police Department

	Report (no charges)	Open (under investigation) & Outstanding Warrants	Book & Release	Warrant	Summons	Arrest	Total	Double Arrest
2006	67	7	0	7	1	50	132	14
2005	70	11	0	10	0	67	158	14
2004	32	4	0	10	0	72	118	22
Percent Change (2005-2006)	-4%	-36%	N/A	-30%	N/A	-25%	-16%	0%
Percent Change (2004-2005)	N/A	N/A	N/A	0%	N/A	-7%	34%	-36%

Table 7

University of Colorado Police Department

	Report (no charges)	Open (under investigation) & Outstanding Warrants	Book & Release	Warrant	Summons	Arrest	Total	Double Arrest
2006	2	1	0	8	0	19	30	2
2005	11	0	0	5	0	13	29	2
2004	15	1	0	2	1	15	34	0
Percent Change (2005-2006)	-82%	N/A	N/A	60%	N/A	46%	3%	N/A
Percent Change (2004-2005)	-27%	-100%	N/A	150%	N/A	-13%	-15%	N/A

Table 8

Domestic Violence Incidents: Three Year Trend (2004-2006)

Formal versus Informal Report Trends

2004

	Boulder PD	Boulder County Sheriff's Office	Lafayette PD	Longmont PD	Louisville PD	University of Colorado PD	Other Law Enforcement Agencies	Total
Informal Reports (Reports, Open, and Outstanding Warrants)	84	30	107	230	36	15	1	503
Formal Reports (Arrest, Book and Release, Summons, and Warrant)	283	144	146	449	82	18	25	1147

Table 9

2005

	Boulder PD	Boulder County Sheriff's	Lafayette PD	Longmont PD	Louisville PD	University of Colorado PD	Other Law Enforcement Agencies	Total
Informal Reports (Reports, Open, and Outstanding Warrants)	67	53	80	261	81	11	3	556
Informal Percent Change (2004-2005)	-20%	77%	-25%	13%	125%	-27%	200%	11%
Formal Reports (Arrest, Book and Release, Summons, and Warrant)	355	175	134	485	77	18	25	1269
Formal Percent Change (2004-2005)	25%	22%	-8%	8%	-6%	0%	0%	11%

Table 10

2006

	Boulder PD	Boulder County Sheriff's Office	Lafayette PD	Longmont PD	Louisville PD	University of Colorado PD	Other Law Enforcement Agencies	Total
Informal Reports (Reports, Open, and Outstanding Warrants)	89	27	80	214	74	3	2	489
Informal Percent Change (2005-2006)	33%	-49%	0%	-18%	-9%	-73%	-33%	-12%
Formal Reports (Arrest, Book and Release, Summons, and Warrant)	334	160	116	406	58	27	34	1135
Formal Percent Change (2005-2006)	-6%	-9%	-13%	-16%	-25%	50%	36%	-11%

Table 11

Felony and Misdemeanor Domestic Violence Crimes

Felony Arrest Rates by Agency

	2004		2005		2006	
	Number of Cases	Percent of Total County Cases	Number of Cases	Percent of Total County Cases	Number of Cases	Percent of Total County Cases
Boulder PD	62	5%	88	7%	105	9%
BC Sheriff's Office	35	3%	48	4%	50	4%
CU PD	7	1%	5	0%	9	1%
Erie PD	2	0%	3	0%	3	0%
Lafayette PD	24	2%	35	3%	30	3%
Longmont PD	123	11%	135	11%	101	9%
Louisville PD	9	1%	22	2%	15	1%
Nederland PD	1	0%	1	0%	1	0%
Other	0	0%	3	0%	7	1%
Total	263	23%	340	27%	321	28%

Table 12

Misdemeanor Arrest Rates by Agency

	2004		2005		2006	
	Number of Cases	Percent of Total County Cases	Number of Cases	Percent of Total County Cases	Number of Cases	Percent of Total County Cases
Boulder PD	221	19%	267	21%	229	20%
BC Sheriff's Office	109	10%	127	10%	110	10%
CU PD	11	1%	13	1%	18	2%
Erie PD	16	1%	9	1%	10	1%
Lafayette PD	122	11%	99	8%	86	8%
Longmont PD	326	28%	350	28%	305	27%
Louisville PD	73	6%	55	4%	43	4%
Nederland PD	6	1%	5	0%	9	1%
Other	0	0%	4	0%	4	0%
Total	884	77%	929	73%	814	72%

Table 13

Felony Arrest Rates for First Time Offenders and Recidivists* by Agency

	2004		2005		2006	
	First Time Offenders	Recidivists	First Time Offenders	Recidivists	First Time Offenders	Recidivists
Boulder PD	42	20	58	30	75	30
BC Sheriff's Office	27	8	32	16	31	19
CU PD	7	0	5	0	5	4
Erie PD	1	1	3	0	3	0
Lafayette PD	17	7	23	12	18	12
Longmont PD	58	65	83	52	61	40
Louisville PD	8	1	16	6	8	7
Nederland PD	1	0	1	0	1	0
Other	0	0	1	2	1	6
Total	161	102	222	118	203	118

Table 14

Misdemeanor Arrest Rates for First Time Offenders and Recidivists* by Agency

	2004		2005		2006	
	First Time Offenders	Recidivists	First Time Offenders	Recidivists	First Time Offenders	Recidivists
Boulder PD	172	49	214	53	186	43
BC Sheriff's Office	76	33	98	29	78	32
CU PD	8	3	10	3	13	5
Erie PD	13	3	7	2	7	3
Lafayette PD	84	38	75	24	62	24
Longmont PD	202	124	246	104	193	112
Louisville PD	55	18	37	18	32	11
Nederland PD	5	1	4	1	9	0
Other	0	0	1	3	1	3
Total	615	269	692	237	581	233

Table 15

*Recidivists are defendants with a prior **domestic violence** offense in Boulder County (criminal histories outside of Boulder County are unavailable). These formal contacts are arrests (including warrants), summonses, and book and releases. Recidivism is based on information collected by the Domestic Abuse Prevention Project since 1994, when electronic data collection began. DAPP recidivist statistics include both technical violations (e.g., violation of restraining order, bond conditions, etc.) and "new" domestic violence incidents.

Demographics

Sex of Defendant

	2004				2005				2006			
	Male	Percent of Agency Cases	Female	Percent of Agency Cases	Male	Percent of Agency Cases	Female	Percent of Agency Cases	Male	Percent of Agency Cases	Female	Percent of Agency Cases
Boulder PD	211	75%	72	25%	273	77%	82	23%	264	79%	70	21%
BC Sheriff's Office	119	83%	25	17%	130	74%	45	26%	124	78%	36	23%
CU PD	13	72%	5	28%	15	83%	3	17%	22	81%	5	19%
Erie PD	12	67%	6	33%	8	67%	4	33%	12	92%	1	8%
Lafayette PD	112	77%	34	23%	99	74%	35	26%	93	80%	23	20%
Longmont PD	370	82%	79	18%	374	77%	111	23%	332	82%	74	18%
Louisville PD	56	68%	26	32%	53	69%	24	31%	43	74%	15	26%
Nederland PD	6	86%	1	14%	5	83%	1	17%	6	60%	4	40%
Ward	0	0%	0	0%	0	0%	0	0%	0	0%	0	0%
Other	0	0%	0	0%	6	86%	1	14%	11	100%	0	0%
Total	899	78%	248	22%	963	76%	306	24%	907	80%	228	20%

Table 16

Age of Defendant

	2004			2005			2006		
	Male	Female	Percent of Cases	Male	Female	Percent of Cases	Male	Female	Percent of Cases
< 18	11	3	1%	12	7	1%	11	16	2%
18-24	220	77	26%	251	88	27%	216	85	27%
25-29	172	31	18%	183	50	18%	191	33	20%
30-34	145	29	15%	141	35	14%	145	16	14%
35-39	121	36	14%	117	39	12%	109	19	11%
40-44	105	42	13%	115	36	12%	97	23	11%
45-49	68	20	8%	72	35	8%	71	21	8%
>50	57	10	6%	72	16	7%	67	15	7%
Total	899	248	100%	963	306	100%	907	228	100%

Table 17

Age of Victim

	2004			2005			2006		
	Male	Female	Percent of Cases	Male	Female	Percent of Cases	Male	Female	Percent of Cases
< 18	4	50	5%	3	35	3%	4	41	4%
18-24	53	251	27%	62	309	29%	68	288	31%
25-29	34	158	17%	48	167	17%	38	158	17%
30-34	34	121	14%	35	119	12%	24	96	11%
35-39	33	98	11%	47	111	12%	26	120	13%
40-44	44	101	13%	38	99	11%	27	87	10%
45-49	16	78	8%	28	71	8%	16	60	7%
>50	17	33	4%	31	54	7%	19	48	6%
Unknown	4	18	2%	4	8	1%	4	11	1%
Total	239	908	100%	296	973	100%	226	909	100%

Table 18

Demographics

Defendants' Highest Level of Education

	2004			2005			2006		
	Male	Female	Percent of Cases	Male	Female	Percent of Cases	Male	Female	Percent of Cases
No Degree	143	44	16%	188	37	18%	202	33	21%
High School Diploma	337	104	38%	384	128	40%	363	102	41%
GED	59	11	6%	47	14	5%	48	11	5%
AA	32	6	3%	39	12	4%	34	5	3%
BA/BS	80	31	10%	95	65	13%	79	32	10%
MA/MS/MB	15	7	2%	10	9	1%	17	4	2%
MD	3	1	0%	4	1	0%	1	0	0%
PHD	10	1	1%	4	1	0%	4	0	0%
Other	3	1	0%	4	0	0%	2	1	0%
Unknown	217	42	23%	188	39	18%	157	40	17%
Total	899	248	100%	963	306	100%	907	228	100%

Table 19

Defendants' Employment Status

	2004			2005			2006		
	Male	Female	Percent of Cases	Male	Female	Percent of Cases	Male	Female	Percent of Cases
Employed	576	121	61%	655	159	64%	602	130	64%
Unemployed	198	89	25%	217	115	26%	209	78	25%
Disabled	4	2	1%	2	3	0%	8	3	1%
Retired	5	1	1%	7	1	1%	4	1	0%
Unknown	116	35	13%	82	28	9%	84	16	9%
Total	899	248	100%	963	306	100%	907	228	100%

Table 20

Defendants' Yearly Income

	2004			2005			2006		
	Male	Female	Percent of Cases	Male	Female	Percent of Cases	Male	Female	Percent of Cases
<5,000	5	8	1%	10	6	1%	6	7	1%
5-9,999	18	13	3%	18	11	2%	26	16	4%
10-14,999	44	15	5%	57	21	6%	32	16	4%
15-24,999	77	18	8%	87	33	9%	86	22	10%
25-34,999	51	5	5%	43	17	5%	31	5	3%
35-49,999	28	9	3%	50	11	5%	33	6	3%
>50,000	39	3	4%	55	6	5%	34	6	4%
Unemployed	203	91	26%	226	116	27%	218	80	26%
Unknown	434	86	45%	417	85	40%	441	70	45%
Total	899	248	100%	963	306	100%	907	228	100%

Table 21

Information about Domestic Violence Formal Incidents

Relationship Between Defendant and Victim

	2004	Percent of Cases	2005	Percent of Cases	2006	Percent of Cases
Common Law Married	27	2%	23	2%	18	2%
Dating	268	23%	254	20%	264	23%
Divorced	50	4%	60	5%	60	5%
Ex-Dating/Living Together	259	23%	309	24%	274	24%
Living Together	166	14%	225	18%	209	18%
Married	290	25%	297	23%	219	19%
Separated	60	5%	78	6%	56	5%
Other	4	0%	6	0%	4	0%
Unknown	23	2%	17	1%	31	3%
Total	1147	100%	1269	100%	1135	100%

Table 22

Who Contacted the Police

	2004	Percent of Cases	2005	Percent of Cases	2006	Percent of Cases
Child	7	1%	19	1%	10	1%
Defendant	72	6%	71	6%	48	4%
Victim	574	50%	648	51%	671	59%
Police*	38	3%	54	4%	59	5%
Other**	317	28%	310	24%	241	21%
Unknown	139	12%	167	13%	106	9%
Total	1147	100%	1269	100%	1135	100%

Table 23

*This represents incidents where police witnessed the domestic in progress or made initial contact with the parties prior to them reporting the incident to the police.

**This represents incidents reported by neighbors, witnesses, other family members, etc.

Defendants' Use of Alcohol and/or an Illegal Substance at the Time of Incident

	2004			2005			2006		
	Male	Female	Percent of Cases	Male	Female	Percent of Cases	Male	Female	Percent of Cases
Boulder PD	73	35	9%	120	38	12%	126	33	14%
BC Sheriff's Office	34	8	4%	41	21	5%	42	13	5%
CU PD	4	1	0%	7	1	1%	4	3	1%
Erie PD	2	1	0%	0	2	0%	5	1	1%
Lafayette PD	38	10	4%	29	14	3%	37	11	4%
Longmont PD	134	31	14%	140	46	15%	128	17	13%
Louisville PD	19	9	2%	19	10	2%	15	8	2%
Nederland PD	4	1	0%	1	0	0%	4	3	1%
Other	0	0	0%	0	0	0%	3	0	0%
Total	308	96	35%	357	132	39%	364	89	40%

Table 24

Victims' Use of Alcohol and/or an Illegal Substance at the Time of Incident

	2004			2005			2006		
	Male	Female	Percent of Cases	Male	Female	Percent of Cases	Male	Female	Percent of Cases
Boulder PD	33	22	5%	60	23	7%	58	26	7%
BC Sheriff's Office	12	6	2%	12	6	1%	14	5	2%
CU PD	2	1	0%	3	3	0%	3	3	1%
Erie PD	1	0	0%	0	0	0%	2	0	0%
Lafayette PD	10	5	1%	11	6	1%	16	9	2%
Longmont PD	45	16	5%	58	24	6%	41	13	5%
Louisville PD	7	8	1%	6	4	1%	10	4	1%
Nederland PD	1	0	0%	2	1	0%	2	1	0%
Other	0	0	0%	0	1	0%	0	0	0%
Total	111	58	15%	152	67	17%	146	61	18%

Table 25

Both Defendants and Victims Use of Alcohol and/or an Illegal Substance at the Time of Incident

	2004		2005		2006	
	Male & Female	Percent of Cases	Male & Female	Percent of Cases	Male & Female	Percent of Cases
Boulder PD	48	4%	68	5%	72	6%
BC Sheriff's Office	15	1%	14	1%	15	1%
CU PD	3	0%	4	0%	5	0%
Erie PD	0	0%	0	0%	2	0%
Lafayette PD	13	1%	15	1%	22	2%
Longmont PD	50	4%	68	5%	42	4%
Louisville PD	11	1%	8	1%	9	1%
Nederland PD	1	0%	1	0%	2	0%
Total	141	12%	178	14%	169	15%

Table 26

Information about Domestic Violence Formal Incidents

Victim Advocate Contacted

	2004			2005			2006*		
	True	False	% in which VA was Contacted	True	False	% in which VA was Contacted	True	False	% in which VA was Contacted
Boulder PD	240	32	85%	323	15	91%	292	16	87%
BC Sheriff's Office	103	22	72%	152	14	87%	134	10	84%
CU PD	15	1	83%	13	1	72%	20	2	74%
Erie PD	4	12	22%	7	3	58%	6	4	46%
Lafayette PD	130	9	89%	99	5	74%	87	10	75%
Longmont PD	347	54	77%	377	43	78%	314	44	77%
Louisville PD	48	16	59%	47	5	61%	43	4	74%
Nederland PD	0	3	0%	5	1	83%	7	0	70%
Other	0	0	0%	3	1	43%	2	2	18%
Total	887	149	77%	1026	88	89%	905	92	80%

Table 27

* There are 138 cases with no mention of victim advocate contact.

Weapon Used

	2004			2005			2006		
	Mis-demeanor	Felony	Percent of Cases	Mis-demeanor	Felony	Percent of Cases	Mis-demeanor	Felony	Percent of Cases
Weapon	68	40	9%	62	75	11%	61	67	11%

	Male	Female	Percent of Cases	Male	Female	Percent of Cases	Male	Female	Percent of Cases
	Weapon	77	31	9%	99	38	11%	91	37

Table 28

Type of Weapon Used

	2004		2005		2006	
	Amount	Percent of Cases	Amount	Percent of Cases	Amount	Percent of Cases
Firearm	15	1%	17	1%	12	1%
Knife	35	3%	49	4%	38	3%
Something Else	70	6%	80	6%	89	8%
Total	120	10%	146	12%	139	12%

Table 29

Defendant's Use of Hands as a Deadly Weapon for 2006

	Strangulation at Incident			Defendant Charged with Assault 2 or Felony Menacing			Convicted of Assault 2 or Felony Menacing		
	Male Def	Female Def	Percent of all formal Agency Cases	Male Def	Female Def	Percent of all formal Agency Cases	Male Def	Female Def	Percent of all formal Agency Cases
Boulder PD	18	2	6%	15	1	5%	5	0	1%
BC Sheriff's Office	13	0	8%	10	0	6%	5	0	3%
CU PD	0	0	0%	0	0	0%	0	0	0%
Erie PD	0	0	0%	0	0	0%	0	0	0%
Lafayette PD	7	0	6%	4	0	3%	4	0	3%
Longmont PD	23	0	6%	15	0	4%	5	0	1%
Louisville PD	2	0	3%	2	0	3%	0	0	0%
Nederland PD	0	0	0%	0	0	0%	0	0	0%
Other	0	0	0%	0	0	0%	0	0	0%
Total	63	2	6%	46	1	4%	19	0	2%

Table 30

Children Who Witness Domestic Violence In Boulder County

Actual Number of Children Present in Formal Domestic Violence Cases

Law Enforcement Agency	2004	2005	2006
Boulder PD	114	108	145
B.C. Sheriff's Office	59	76	61
CU PD	5	3	2
Erie PD	9	11	10
Lafayette PD	115	101	71
Longmont PD	252	305	243
Louisville	26	33	31
Nederland	0	1	0
Other	0	4	5
Total	580	642	568

Table 31

Age of Children Present in Formal Domestic Violence Cases*

	< 1	1-3	4-5	6-7	8-9	10-11	12-13	14-15	16-17	Average
<i>Number of Children</i>	48	102	62	53	50	29	35	34	26	6

*In 2006, 129 children's ages were not documented by law enforcement officers in reports received by DAPP.

Children's Involvement with Domestic Violence Cases in Boulder County

	Boulder PD	BC Sheriff's Office	CU PD	Erie PD	Lafayette PD	Longmont PD	Louisville PD	Nederland PD	Other	Total
<i>Number of Cases Where Children Were Present</i>	74	40	2	5	42	140	16	0	3	322
Percent Total**	22%	25%	7%	38%	36%	34%	28%	0%	27%	28%
<i>Number of Cases Where Children Witness the incident</i>	58	31	1	4	27	112	11	0	3	247
Percent Total**	17%	19%	4%	31%	23%	28%	19%	0%	27%	22%
<i>Number of Cases Where Children Witness & Defendant was Charged With Child Abuse</i>	36	31	0	1	21	76	5	0	0	170
Percent Total***	62%	100%	0%	25%	78%	68%	45%	0%	0%	69%

** These percentages are based on total formal cases for each agency.

*** These percentages are based on number of cases where children "witness" the Domestic Violence incident, see chart above.

Table 32

*Bond Information**

In **2004**, there were **1139** defendants eligible for bond (full custody arrests and warrant arrest). Of those, **865 (76%)** defendants posted bond and **275 (24%)** defendants did not post bond. In **2005**, there were **1267** defendants eligible for bond (full custody arrests and warrant arrest). Of those, **974 (77%)** defendants posted bond and **293 (23%)** defendants did not post bond. In **2006**, there were **1132** defendants eligible for bond (full custody arrests and warrant arrest). Of those, **819 (72%)** defendants posted bond and **313 (28%)** defendants did not post bond.

In **2004**, **865** defendants posted bond; from those **640 (74%)** were first time offenders and **225 (26%)** were recidivists. In **2005**, **974** defendants posted bond; from those **755 (78%)** were first time offenders and **219 (22%)** were recidivists. In **2006**, **819** defendants posted bond; from those **608 (74%)** were first time offenders and **211 (26%)** were recidivists.

Bond Amount Information

	2004			2005			2006		
	Lowest	Highest	Average	Lowest	Highest	Average	Lowest	Highest	Average
Felonies	\$250	\$100,000	\$6,245	\$500	\$100,000	\$5,887	\$500	\$50,000	\$5,612
Misdemeanors	\$100	\$20,000	\$1,505	\$100	\$20,000	\$1,517	\$100	\$2,500	\$1,542
Male	\$100	\$100,000	\$2,835	\$100	\$100,000	\$2,827	\$100	\$50,000	\$2,807
Female	\$100	\$15,000	\$1,300	\$100	\$50,000	\$1,741	\$100	\$20,000	\$1,710
First Time Offenders	\$100	\$50,000	\$2,001	\$100	\$75,000	\$2,186	\$100	\$25,000	\$2,265
Recidivists	\$100	\$100,000	\$3,782	\$300	\$100,000	\$3,738	\$100	\$50,000	\$3,374

Table 33

Bond Conditions of Defendants (First Time Offenders versus Recidivists)

	2004			2005			2006		
	First Time Offenders	Recidivists	Total	First Time Offenders	Recidivists	Total	First Time Offenders	Recidivists	Total
No Contact	623	220	843 (97%)	728	214	942 (97%)	598	203	801 (98%)
Interim Supervision	168	77	245 (28%)	163	66	229 (24%)	135	70	205 (25%)
No Weapons	59	15	74 (8%)	72	21	93 (10 %)	99	37	136 (17%)
Substance Abuse Monitoring	114	50	164 (19%)	131	50	181 (19%)	127	57	184 (22%)
Alcohol Monitoring	187	71	258 (30%)	236	72	308 (32%)	205	73	278 (34%)
No Drugs	112	42	154 (18%)	171	49	220 (22%)	156	55	211 (26%)
No Conditions	12	6	18 (2%)	6	1	7 (1%)	2	1	3 (0%)

Table 34

* Please see Statistical Summary, under Bonds, page iv.

Bond Information

Type of Bond Ordered (First Time Offenders versus Recidivists)

	2004			2005			2006		
	First Time Offenders	Recidivists	Total	First Time Offenders	Recidivists	Total	First Time Offenders	Recidivists	Total
Cash/Security/Property	158	97	255	120	58	178	118	46	164
Security	187	105	292	244	130	374	216	138	354
Personal Recognizance	292	21	313	380	27	407	261	24	285
Co-Personal Recognizance	3	1	4	11	4	15	13	3	16
Unknown	0	1	1	0	0	0	0	0	0
Total	640	225	865	755	219	974	608	211	819

Table 35

Type of Bond Ordered and Bond Conditions for 2004

	No Contact	Interim Supervision	No Weapon	Sub Ab Monitoring	Alcohol Monitoring
Cash/Security/Property	251	93	23	74	102
Security	288	110	37	57	89
Personal Recognizance	299	41	14	33	67
Co-Personal Recognizance	3	0	0	0	0
Total	841	244	74	164	258

Table 36

Type of Bond Ordered and Bond Conditions for 2005

	No Contact	Interim Supervision	No Weapon	Sub Ab Monitoring	Alcohol Monitoring
Cash/Security/Property	173	56	27	49	68
Security	364	125	44	94	142
Personal Recognizance	390	42	20	34	94
Co-Personal Recognizance	15	6	2	4	4
Total	942	229	93	181	308

Table 37

Type of Bond Ordered and Bond Conditions for 2006

	No Contact	Interim Supervision	No Weapon	Sub Ab Monitoring	Alcohol Monitoring
Cash/Security/Property	161	53	32	42	60
Security	343	127	77	113	150
Personal Recognizance	282	24	25	28	64
Co-Personal Recognizance	15	1	2	1	4
Total	801	205	136	184	278

Table 38

Information about First Time Offenders and Recidivists in Domestic Violence Offenses in Boulder County

First Time Offenders Versus Recidivists

For 2004, of the **1147** formal arrests, **776 (68%)** were first time offenders and **371 (32%)** were recidivists or had committed a previous domestic violence crime in Boulder County. Of the 2004 recidivists, **198 (53%)** of the defendants committed their second domestic violence offense and **173 (47%)** of defendants committed their third or more domestic violence offense.

For 2005, of the **1269** formal arrests, **914 (72%)** were first time offenders and **355 (28%)** were recidivists or had committed a previous domestic violence crime in Boulder County. Of the 2005 recidivists, **205 (58%)** of the defendants committed their second domestic violence offense and **150 (42%)** of defendants committed their third or more domestic violence offense.

For 2006, of the **1135** formal arrests, **784 (70%)** were first time offenders and **351 (30%)** were recidivists or had committed a previous domestic violence crime in Boulder County. Of the 2006 recidivists, **176 (50%)** of the defendants committed their second domestic violence offense and **175 (50%)** of defendants committed their third or more domestic violence offense.

Days Between Reported Domestic Violence Offenses

2004				
Recidivists*	Number of Recidivists	Low Days**	High Days	Average Days
1st & 2nd Offenses	198	0	3830	804
Subsequent Offenses	173	0	3509	480

Table 39

2005				
Recidivists*	Number of Recidivists	Low Days**	High Days	Average Days
1st & 2nd Offenses	205	0	3851	668
Subsequent Offenses	150	0	3981	597

Table 40

2006				
Recidivists*	Number of Recidivists	Low Days**	High Days	Average Days
1st & 2nd Offenses	176	0	4498	802
Subsequent Offenses	175	0	3685	603

Table 41

Recidivists and Number of Days Between Current and Previous Offense

2004				
	Number of Recidivists	Low Days**	High Days	Average Days
Boulder PD	69	0	3784	763
Boulder Sheriff	41	3	3500	703
CU PD	3	19	359	134
Erie PD	4	18	1744	493
Lafayette PD	45	0	3588	772
Longmont PD	189	0	3830	606
Louisville PD	19	2	1344	396
Nederland PD	1	97	97	97
Other	0	N/A	N/A	N/A

Table 42

2005				
	Number of Recidivists	Low Days**	High Days	Average Days
Boulder PD	83	0	3851	678
Boulder Sheriff	45	0	3741	817
CU PD	3	45	335	217
Erie PD	2	5	1926	965
Lafayette PD	36	13	3981	698
Longmont PD	156	0	3800	635
Louisville PD	24	0	1653	244
Nederland PD	1	300	300	300
Other	5	15	216	104

Table 43

2006				
	Number of Recidivists	Low Days**	High Days	Average Days
Boulder PD	73	0	3975	650
Boulder Sheriff	51	1	3763	649
CU PD	9	6	3000	438
Erie PD	3	41	1060	450
Lafayette PD	36	48	3593	750
Longmont PD	152	0	4055	738
Louisville PD	18	2	4498	1061
Nederland PD	0	N/A	N/A	N/A
Other	9	0	1670	264

Table 44

*Recidivists are defendants with a prior domestic violence offense in Boulder County (criminal histories outside of Boulder County are unavailable). These formal contacts are arrests (including warrants), summonses, and book and releases. Recidivism is based on information collected by the Domestic Abuse Prevention Project since 1994, when electronic data collection began. DAPP recidivist statistics include both technical violations (e.g., violation of restraining order, bond conditions, etc.) and "new" incidents.

**While some recidivists may have many years between offenses, some reoffend on the same day as their initial arrest. This feat may be accomplished, for example, by telephoning the victim from the jail - in violation of bond conditions, criminal or civil protection orders, or both.

Information about First Time Victims and Victims in Prior Domestic Violence Offenses in Boulder County

First Time Victims Versus Repeat Victims

For 2004, of the **1147** formal arrests, **806 (70%)** were first time victims and **347 (30%)** were prior victims of a domestic violence crime in Boulder County. For 2004, of the prior victims, **182 (52%)** of the victims were victims of a second domestic violence offense and **165 (48%)** of victims were victims of a third or more domestic violence offense.

For 2005, of the **1269** formal arrests, **928 (73%)** were first time victims and **341 (27%)** were prior victims of a domestic violence crime in Boulder County. For 2005, of the prior victims, **183 (54%)** of the victims were victims of a second domestic violence offense and **158 (46%)** of victims were victims of a third or more domestic violence offense.

For 2006, of the **1135** formal arrests, **815 (72%)** were first time victims and **320 (28%)** were prior victims of a domestic violence crime in Boulder County. For 2006, of the prior victims, **164 (51%)** of the victims were victims of a second domestic violence offense and **156 (49%)** of victims were victims of a third or more domestic violence offense.

Days Between Reported Domestic Violence Victimization

2004

	Number of Victims	Low Days**	High Days	Average Days
1st & 2nd Victimization*	182	0	3469	702
Subsequent Victimization*	165	0	3509	507

Table 45

2005

	Number of Victims	Low Days**	High Days	Average Days
1st & 2nd Victimization*	183	0	3574	747
Subsequent Victimization*	158	1	3837	561

Table 46

2006

	Number of Victims	Low Days**	High Days	Average Days
1st & 2nd Victimization*	164	0	4242	697
Subsequent Victimization*	156	0	3846	509

Table 47

Repeat Victims and Number of Days Between Current and Previous Victimization

2004

	Number of Victims	Low Days**	High Days	Average Days
Boulder PD	59	0	3509	714
Boulder Sheriff	36	3	3218	421
CU PD	3	19	359	134
Erie PD	4	18	1744	493
Lafayette PD	49	1	3469	806
Longmont PD	178	0	3350	590
Louisville PD	16	2	1282	446
Nederland PD	2	62	97	79
Other	0	N/A	N/A	N/A

Table 48

2005

	Number of Victims	Low Days**	High Days	Average Days
Boulder PD	74	0	3350	580
Boulder Sheriff	43	2	3574	930
CU PD	2	45	272	158
Erie PD	2	5	2844	1424
Lafayette PD	33	13	3188	746
Longmont PD	158	1	3837	676
Louisville PD	23	0	1653	284
Nederland PD	1	1673	1673	1673
Other	5	15	216	104

Table 49

2006

	Number of Victims	Low Days**	High Days	Average Days
Boulder PD	63	0	4085	571
Boulder Sheriff	49	1	3403	521
CU PD	6	6	3000	578
Erie PD	4	41	1060	583
Lafayette PD	36	48	3827	873
Longmont PD	136	0	4149	652
Louisville PD	18	2	4242	449
Nederland PD	1	915	915	915
Other	7	0	124	37

Table 50

*Victimization are victims of a domestic violence incident with a prior domestic violence victimization in Boulder County (criminal histories outside of Boulder County are unavailable). These contacts are arrests (including warrants), summonses, and book and releases. Victimization is based on information collected by the Domestic Abuse Prevention Project since 1994, when electronic data collection began. DAPP victimization statistics include both technical violations (e.g., violation of restraining order, bond conditions, etc.) and "new" incidents.

**While some victims may have many years between incidents, some are revictimized on the same day as their initial victimization. For instance, the defendant may, for example, telephone the victim from the jail - in violation of bond conditions, criminal or civil protective order, or both.

Disposition Information ~ Female/Male Comparison

Female/Male Comparison 2004

Total Convictions = **843 (70%)** Total Dismissals = **368 (30%)**

There were **1211** cases with dispositions for 2004: **276 (23%)** female defendants and **935 (77%)** male defendants. Sentencing was as follows:

	Number of Sentences		Percent of Total Sentences		Low Sentence Length (Days)		High Sentence Length (Days)		Average Sentence Length (Days)	
	Female	Male	Female	Male	Female	Male	Female	Male	Female	Male
<i>Deferred Prosecution*</i>	2	1	1%	0%	540	540	540	540	540	540
<i>Deferred Sentence</i>	93	253	34%	27%	365	180	1460	1460	506	547
<i>Probation</i>	41	274	15%	29%	365	270	1460	2190	597	686
<i>Jail</i>	25	315	9%	34%	4	1	365	5475	87	190
<i>Dismissed</i>	103	161	37%	17%	N/A	N/A	N/A	N/A	N/A	N/A
<i>Dismissed w/plea bargain</i>	10	68	4%	7%	N/A	N/A	N/A	N/A	N/A	N/A
<i>Dismissed Warrant Expired</i>	2	16	1%	2%	N/A	N/A	N/A	N/A	N/A	N/A
Total**	276	1088	100%	116%						

Table 51

Female/Male Comparison 2005

Total Convictions = **865 (72%)** Total Dismissals = **334 (28%)**

There were **1199** cases with dispositions for 2005: **276 (23%)** female defendants and **923 (77%)** male defendants. Sentencing was as follows:

	Number of Sentences		Percent of Total Sentences		Low Sentence Length (Days)		High Sentence Length (Days)		Average Sentence Length (Days)	
	Female	Male	Female	Male	Female	Male	Female	Male	Female	Male
<i>Deferred Prosecution*</i>	1	1	0%	0%	540	365	540	365	540	365
<i>Deferred Sentence</i>	93	240	34%	26%	180	180	730	1460	446	543
<i>Probation</i>	55	330	20%	36%	180	60	2190	3650	594	675
<i>Jail</i>	42	296	15%	32%	4	1	900	10950	128	237
<i>Dismissed</i>	91	164	33%	18%	N/A	N/A	N/A	N/A	N/A	N/A
<i>Dismissed w/plea bargain</i>	12	54	4%	6%	N/A	N/A	N/A	N/A	N/A	N/A
<i>Dismissed Warrant Expired</i>	0	6	0%	1%	N/A	N/A	N/A	N/A	N/A	N/A
Total**	294	1091	107%	118%						

Table 52

Female/Male Comparison 2006

Total Convictions = **865 (73%)** Total Dismissals = **326 (27%)**

There were **1191** cases with dispositions for 2006: **245 (20%)** female defendants and **946 (80%)** male defendants. Sentencing was as follows:

	Number of Sentences		Percent of Total Sentences		Low Sentence Length (Days)		High Sentence Length (Days)		Average Sentence Length (Days)	
	Female	Male	Female	Male	Female	Male	Female	Male	Female	Male
<i>Deferred Prosecution*</i>	0	0	0%	0%	N/A	N/A	N/A	N/A	N/A	N/A
<i>Deferred Sentence</i>	85	216	35%	23%	180	180	1460	1460	483	561
<i>Probation</i>	87	433	36%	46%	180	90	1460	4380	527	674
<i>Jail</i>	21	336	9%	36%	1	2	180	6570	53	265
<i>Dismissed</i>	75	164	31%	17%	N/A	N/A	N/A	N/A	N/A	N/A
<i>Dismissed w/plea bargain</i>	8	61	3%	6%	N/A	N/A	N/A	N/A	N/A	N/A
<i>Dismissed Warrant Expired</i>	4	7	2%	1%	N/A	N/A	N/A	N/A	N/A	N/A
Total**	280	1217	114%	129%						

Table 53

*Colorado State Law prohibits deferred prosecutions in domestic violence cases; however, they are still occasionally given to DV defendants in Boulder County.

**Total number of sentences handed down by the courts. Some defendants receive multiple sanctions; therefore, number of sentences may not equal number of individuals.

Disposition Information ~ Dismissed Cases in 2006

* **1191** cases reached disposition in 2006.

Of those **1191** cases, **326** were dismissed (including straight dismissals, as well as plea bargains and expired warrants).

~Dismissals by level of crime in 2006 ~

* Of the **1191** cases that reached disposition in 2006:

847 (71%) of these cases were misdemeanors; of those, **267 cases (31%)** were dismissed.

344 (29%) of these cases were felonies; of those, **59 cases (17%)** were dismissed.

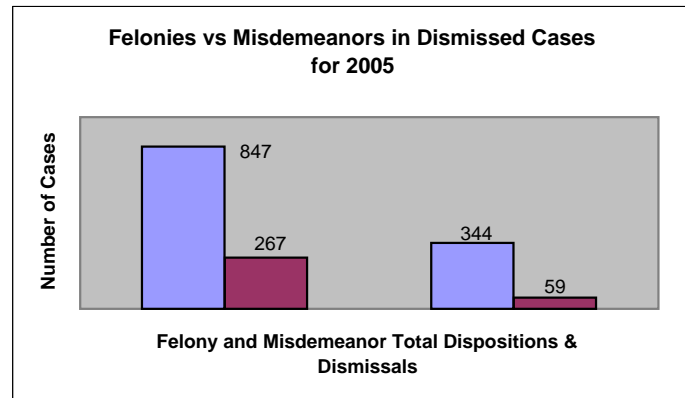


Figure 1

~Dismissals by Gender in 2006 ~

* Of the **1191** cases that reached disposition during 2006:

946 were male, and **236 (25%)** were dismissed.

245 were female, and **90 (38%)** were dismissed.

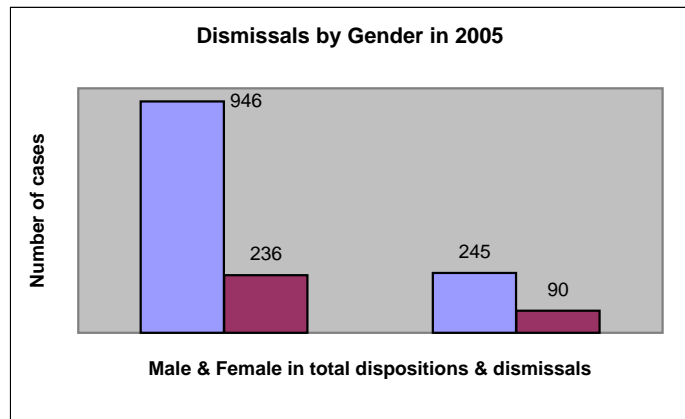


Figure 2

*~Dismissals by Charges (Misdemeanors & Felonies) in 2006 ~ **

	Assault 3rd Degree	Harassment	Violation of Bond	Violation of Protection Order	Criminal Mischief	Child Abuse	Others	Total
Dismissed	81 (10%)	92 (11%)	15 (2%)	55 (6%)	35 (4%)	30 (4%)	301 (35%)	609 (72%)
Dismissed w/plea bargain	17 (2%)	20 (2%)	23 (3%)	54 (6%)	7 (1%)	2 (0%)	91 (11%)	214 (25%)
Dismissed Warrant Expired	2 (0%)	6 (1%)	0 (0%)	2 (0%)	0 (0%)	0 (0%)	10 (1%)	25 (3%)
Total	100 (12%)	118 (14%)	38 (5%)	111 (13%)	42 (5%)	32 (4%)	402 (47%)	848 (100%)

Table 54

* This chart represents charges dismissed in 2006. The chart does **not** reflect cases; each case may have multiple charges. Total number of charges dismissed is 848; all percentages are based on that number.

Disposition Information ~ Double Arrest

Double Arrest Female/Male Comparison 2004

Total Convictions = **52** Total Dismissals = **42**

There were **94** cases with dispositions for 2004: **47 (50%)** female defendants and **47 (50%)** male defendants. Sentencing was as follows:

	<i>Number of Sentences</i>		<i>Percent of Total Sentences</i>		<i>Low Sentence Length (Days)</i>		<i>High Sentence Length (Days)</i>		<i>Average Sentence Length (Days)</i>		
	Female	Male	Female	Male	Female	Male	Female	Male	Female	Male	
Deferred Prosecution*	0	0	0%	0%	0	0	0	0	0	0	
<i>Deferred Sentence</i>	15	17	32%	36%	365	365	730	730	472	479	
<i>Probation</i>	4	9	9%	19%	540	365	730	730	587	583	
<i>Jail</i>	1	9	2%	19%	10	10	10	365	10	117	
<i>Dismissed</i>	25	16	53%	34%	N/A	N/A	N/A	N/A	N/A	N/A	
<i>Dismissed w/plea bargain</i>	0	1	0%	2%	N/A	N/A	N/A	N/A	N/A	N/A	
Total**	45	52	96%	111%							Table 55

Double Arrest Female/Male Comparison 2005

Total Convictions = **47** Total Dismissals = **44**

There were **91** cases with dispositions for 2005: **48 (53%)** female defendants and **43 (47%)** male defendants. Sentencing was as follows:

	<i>Number of Sentences</i>		<i>Percent of Total Sentences</i>		<i>Low Sentence Length (Days)</i>		<i>High Sentence Length (Days)</i>		<i>Average Sentence Length (Days)</i>		
	Female	Male	Female	Male	Female	Male	Female	Male	Female	Male	
Deferred Prosecution*	0	0	0%	0%	N/A	N/A	N/A	N/A	N/A	N/A	
<i>Deferred Sentence</i>	10	12	21%	28%	180	180	540	730	398	468	
<i>Probation</i>	6	15	13%	35%	365	180	2190	730	785	582	
<i>Jail</i>	3	9	6%	21%	5	10	730	180	250	52	
<i>Dismissed</i>	25	13	52%	30%	N/A	N/A	N/A	N/A	N/A	N/A	
<i>Dismissed w/plea bargain</i>	3	2	6%	5%	N/A	N/A	N/A	N/A	N/A	N/A	
Total**	47	51	98%	119%							Table 56

Double Arrest Female/Male Comparison 2006

Total Convictions = **45** Total Dismissals = **29**

There were **74** cases with dispositions for 2006: **35 (47%)** female defendants and **39 (53%)** male defendants. Sentencing was as follows:

	<i>Number of Sentences</i>		<i>Percent of Total Sentences</i>		<i>Low Sentence Length (Days)</i>		<i>High Sentence Length (Days)</i>		<i>Average Sentence Length (Days)</i>		
	Female	Male	Female	Male	Female	Male	Female	Male	Female	Male	
Deferred Prosecution*	0	0	0%	0%	N/A	N/A	N/A	N/A	N/A	N/A	
<i>Deferred Sentence</i>	8	10	23%	26%	365	365	730	730	498	471	
<i>Probation</i>	8	19	23%	49%	365	180	730	730	521	525	
<i>Jail</i>	2	7	6%	18%	5	10	45	365	25	78	
<i>Dismissed</i>	16	9	46%	23%	N/A	N/A	N/A	N/A	N/A	N/A	
<i>Dismissed w/plea bargain</i>	0	2	0%	5%	N/A	N/A	N/A	N/A	N/A	N/A	
Total**	34	47	97%	121%							Table 57

*Colorado State Law prohibits deferred prosecutions in domestic violence cases; however, they are still occasionally given to DV defendants in Boulder County.

**Total number of sentences handed down by the courts. Some defendants receive multiple sanctions; therefore, number of sentences may not equal number of individuals.

Disposition Information ~ First Time Offenders

First Time Offenders 2004

Total Convictions = 592 (71%) Total Dismissals = 240 (29%)

There were 832 cases with dispositions for 2004: 217 (26%) female defendants and 615 (74%) male defendants. Sentencing was as follows:

	Number of Sentences		Percent of Total Sentences		Low Sentence Length (Days)		High Sentence Length (Days)		Average Sentence Length (Days)	
	Female	Male	Female	Male	Female	Male	Female	Male	Female	Male
Deferred Prosecution*	1	1	0%	0%	540	540	540	540	540	540
Deferred Sentence	86	231	40%	38%	365	180	1460	1460	508	540
Probation	26	169	12%	27%	365	270	730	1825	564	665
Jail	8	156	4%	25%	10	1	90	5475	43	219
Dismissed	86	108	40%	18%	N/A	N/A	N/A	N/A	N/A	N/A
Dismissed w/plea bargain	3	21	1%	3%	N/A	N/A	N/A	N/A	N/A	N/A
Dismissed Warrant Expired	2	13	1%	2%	N/A	N/A	N/A	N/A	N/A	N/A
Total**	212	699	98%	114%						

Table 58

First Time Offenders 2005

Total Convictions = 651 (74%) Total Dismissals = 230 (26%)

There were 881 cases with dispositions for 2005: 223 (25%) female defendants and 658 (75%) male defendants. Sentencing was as follows:

	Number of Sentences		Percent of Total Sentences		Low Sentence Length (Days)		High Sentence Length (Days)		Average Sentence Length (Days)	
	Female	Male	Female	Male	Female	Male	Female	Male	Female	Male
Deferred Prosecution*	1	0	0%	0%	540	N/A	540	N/A	540	N/A
Deferred Sentence	91	233	41%	35%	180	180	730	1460	446	541
Probation	40	216	18%	33%	180	60	2190	1825	595	643
Jail	23	162	10%	25%	4	1	730	7300	61	227
Dismissed	76	117	34%	18%	N/A	N/A	N/A	N/A	N/A	N/A
Dismissed w/plea bargain	5	22	2%	3%	N/A	N/A	N/A	N/A	N/A	N/A
Dismissed Warrant Expired	0	3	0%	0%	N/A	N/A	N/A	N/A	N/A	N/A
Total**	236	753	106%	114%						

Table 59

First Time Offenders 2006

Total Convictions = 587 (73%) Total Dismissals = 214 (27%)

There were 801 cases with dispositions for 2006: 203 (25%) female defendants and 598 (75%) male defendants. Sentencing was as follows:

	Number of Sentences		Percent of Total Sentences		Low Sentence Length (Days)		High Sentence Length (Days)		Average Sentence Length (Days)	
	Female	Male	Female	Male	Female	Male	Female	Male	Female	Male
Deferred Prosecution*	0	0	0%	0%	N/A	N/A	N/A	N/A	N/A	N/A
Deferred Sentence	80	186	39%	31%	180	180	1460	1460	477	537
Probation	71	279	35%	47%	180	90	1460	3650	497	606
Jail	13	161	6%	27%	2	2	180	6570	61	265
Dismissed	66	114	33%	19%	N/A	N/A	N/A	N/A	N/A	N/A
Dismissed w/plea bargain	2	17	1%	3%	N/A	N/A	N/A	N/A	N/A	N/A
Dismissed Warrant Expired	3	5	1%	1%	N/A	N/A	N/A	N/A	N/A	N/A
Total**	235	762	105%	116%						

Table 60

*Colorado State Law prohibits deferred prosecutions in domestic violence cases; however, they are still occasionally given to DV defendants in Boulder County.

**Total number of sentences handed down by the courts. Some defendants receive multiple sanctions; therefore, number of sentences may not equal number of individuals.

Disposition Information ~ Recidivists*

Recidivists 2004

Total Convictions = **250 (66%)** Total Dismissals = **128 (34%)**

There were **378** cases with dispositions for 2004: **59 (16%)** female defendants and **319 (84%)** male defendants.

Sentencing was as follows:

	Number of Sentences		Percent of Total Sentences		Low Sentence Length (Days)		High Sentence Length (Days)		Average Sentence Length (Days)	
	Female	Male	Female	Male	Female	Male	Female	Male	Female	Male
Deferred Prosecution**	1	0	2%	0%	540	0	540	0	540	0
<i>Deferred Sentence</i>	7	22	12%	7%	365	270	540	1460	490	626
<i>Probation</i>	15	104	25%	33%	365	365	1460	2190	652	726
<i>Jail</i>	17	159	29%	50%	4	3	365	1825	108	177
<i>Dismissed</i>	17	53	29%	17%	N/A	N/A	N/A	N/A	N/A	N/A
<i>Dismissed w/plea bargain</i>	7	47	12%	15%	N/A	N/A	N/A	N/A	N/A	N/A
<i>Dismissed Warrant Expired</i>	0	3	0%	1%	N/A	N/A	N/A	N/A	N/A	N/A
Total***	64	388	108%	122%						

Table 61

Recidivists 2005

Total Convictions = **214 (67%)** Total Dismissals = **104 (33%)**

There were **318** cases with dispositions for 2005: **53 (17%)** female defendants and **265 (83%)** male defendants.

Sentencing was as follows:

	Number of Sentences		Percent of Total Sentences		Low Sentence Length (Days)		High Sentence Length (Days)		Average Sentence Length (Days)	
	Female	Male	Female	Male	Female	Male	Female	Male	Female	Male
Deferred Prosecution**	0	1	0%	0%	N/A	365	N/A	365	N/A	365
<i>Deferred Sentence</i>	2	8	3%	3%	365	540	540	730	452	635
<i>Probation</i>	15	113	25%	35%	365	180	1095	3650	592	738
<i>Jail</i>	19	134	32%	42%	4	3	900	10950	209	249
<i>Dismissed</i>	15	47	25%	15%	N/A	N/A	N/A	N/A	N/A	N/A
<i>Dismissed w/plea bargain</i>	7	32	12%	10%	N/A	N/A	N/A	N/A	N/A	N/A
<i>Dismissed Warrant Expired</i>	0	3	0%	1%	N/A	N/A	N/A	N/A	N/A	N/A
Total***	58	338	98%	106%						

Table 62

Recidivists 2006

Total Convictions = **278 (71%)** Total Dismissals = **112 (29%)**

There were **390** cases with dispositions for 2006: **42 (11%)** female defendants and **348 (89%)** male defendants.

Sentencing was as follows:

	Number of Sentences		Percent of Total Sentences		Low Sentence Length (Days)		High Sentence Length (Days)		Average Sentence Length (Days)	
	Female	Male	Female	Male	Female	Male	Female	Male	Female	Male
Deferred Prosecution**	0	0	0%	0%	N/A	N/A	N/A	N/A	N/A	N/A
<i>Deferred Sentence</i>	5	30	12%	9%	365	365	1095	1460	581	710
<i>Probation</i>	16	154	38%	44%	365	180	730	4380	659	799
<i>Jail</i>	8	175	19%	50%	3	2	120	3285	40	364
<i>Dismissed</i>	9	50	21%	14%	N/A	N/A	N/A	N/A	N/A	N/A
<i>Dismissed w/plea bargain</i>	6	44	14%	13%	N/A	N/A	N/A	N/A	N/A	N/A
<i>Dismissed Warrant Expired</i>	1	2	2%	1%	N/A	N/A	N/A	N/A	N/A	N/A
Total***	45	455	107%	131%						

Table 63

* For definition of Recidivists please see bottom of page 13.

Colorado State Law **prohibits deferred prosecutions in domestic violence cases; however, they are still occasionally given to DV defendants in Boulder County.

***Total number of sentences handed down by the courts. Some defendants receive multiple sanctions; therefore, number of sentences may not equal number of individuals.

Disposition Information ~ Court Ordered Treatment

36 Week Domestic Violence Treatment Ordered

In 2004, **532 (63%** of total convictions) offenders were sentenced to dv treatment; of these, **341 (40%)** were sentence to jail. **416** were first time offenders and **116** were recidivists.

In 2005, **543 (63%** of total convictions) offenders were sentenced to dv treatment; of these, **338 (40%)** were sentence to jail. **437** were first time offenders and **106** were recidivists.

In 2006, **541 (63%** of total convictions) offenders were sentenced to dv treatment; of these, **357 (41%)** were sentence to jail. **391** were first time offenders and **150** were recidivists.

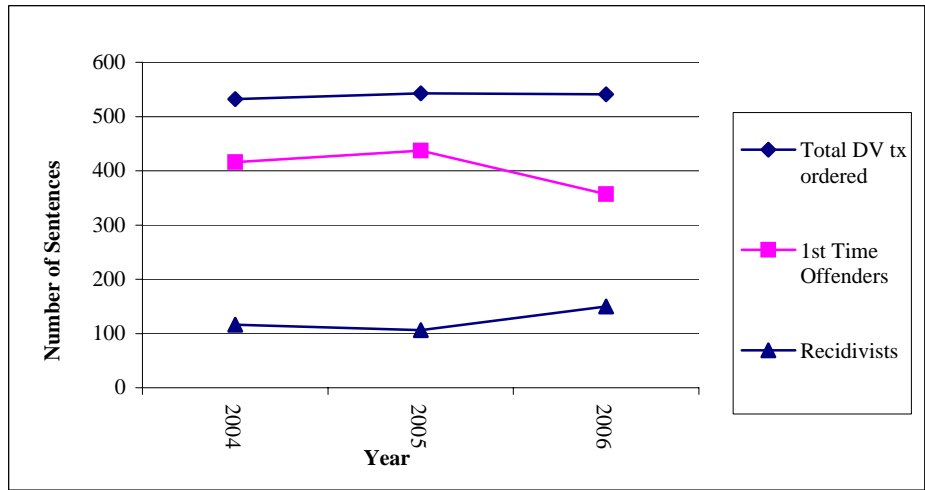


Figure 3

Mental Health, Anger Management, and Alcohol/Substance Abuse Treatment Ordered*

In 2004, **107** offenders were sentenced to mental health tx. For 2005, **77** offenders were sentenced to mental health tx. For 2006, **85** offenders were sentenced to mental health tx.

In 2004, **17** offenders were sentenced to anger management tx. For 2005, **20** offenders were sentenced to anger management tx. For 2006, **28** offenders were sentenced to anger management tx.

For 2004, in **425** cases with dispositions the defendant used alcohol or an illegal substance. Of those cases, **204 (48%)** offenders were sentenced to alcohol and/or substance abuse treatment.

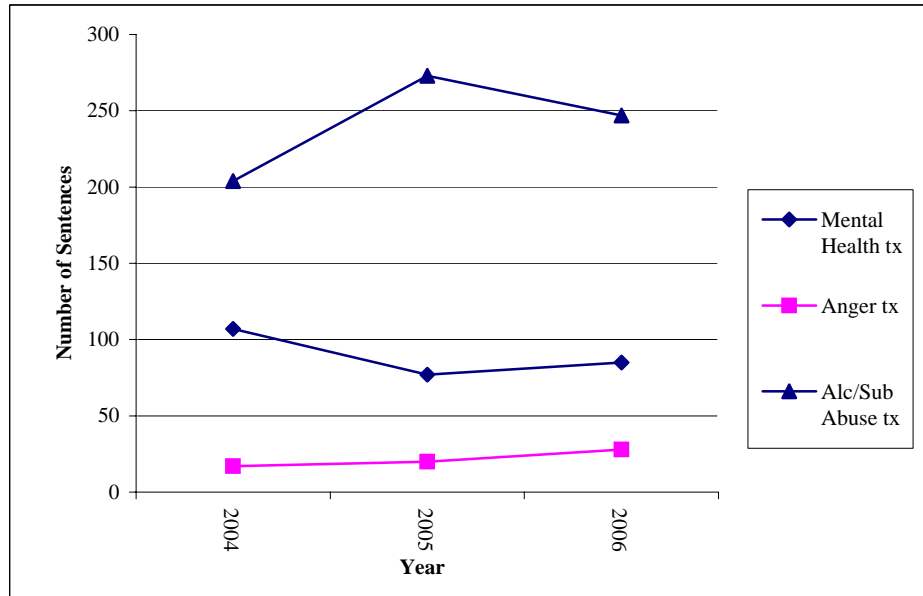


Figure 4

For 2005, in **457** cases with dispositions the defendant used alcohol or an illegal substance. Of those cases, **273 (60%)** offenders were sentenced to alcohol and/or substance abuse treatment.

For 2006, in **466** cases with dispositions the defendant used alcohol or an illegal substance. Of those cases, **247 (53%)** offenders were sentenced to alcohol and/or substance abuse treatment.

*These conditions may be in addition to state mandated 36 week court ordered treatment

Disposition Information ~ Charging and Disposition Information Regarding Children

In 2004, **333 (27%)** of cases with dispositions involved children. Of those, **178 (53%)** of the defendants were charged with child abuse and **12 (7% of defendants charged)** defendants were convicted of a child abuse charge.

In 2005, **359 (30%)** of cases with dispositions involved children. Of those, **170 (47%)** of the defendants were charged with child abuse and **18 (11% of defendants charged)** defendants were convicted of a child abuse charge.

In 2006, **350 (30%)** of cases with dispositions involved children. Of those, **174 (50%)** of the defendants were charged with child abuse and **21 (12% of defendants charged)** defendants were convicted of a child abuse charge.

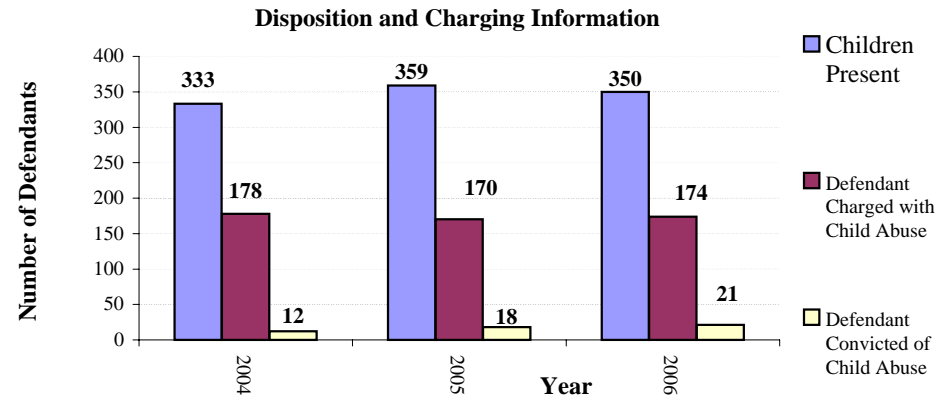


Figure 5

In 2004, **116 (14% of total convictions)** defendants were sentenced to cooperate with the Department of Social Services and **33 (4% of total convictions)** defendants were sentenced to parenting classes as a condition of their disposition.

In 2005, **107 (12% of total convictions)** defendants were sentenced to cooperate with the Department of Social Services and **33 (4% of total convictions)** defendants were sentenced to parenting classes as a condition of their disposition.

In 2006, **68 (8% of total convictions)** defendants were sentenced to cooperate with the Department of Social Services and **11 (1% of total convictions)** defendants were sentenced to parenting classes as a condition of their disposition.

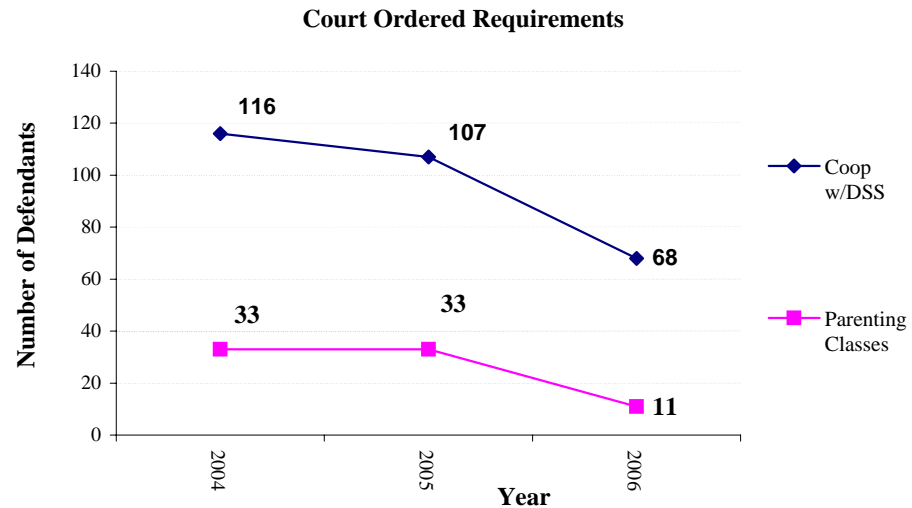


Figure 6

**Domestic Violence Comparison by Population In Boulder County*
January - December 2006**

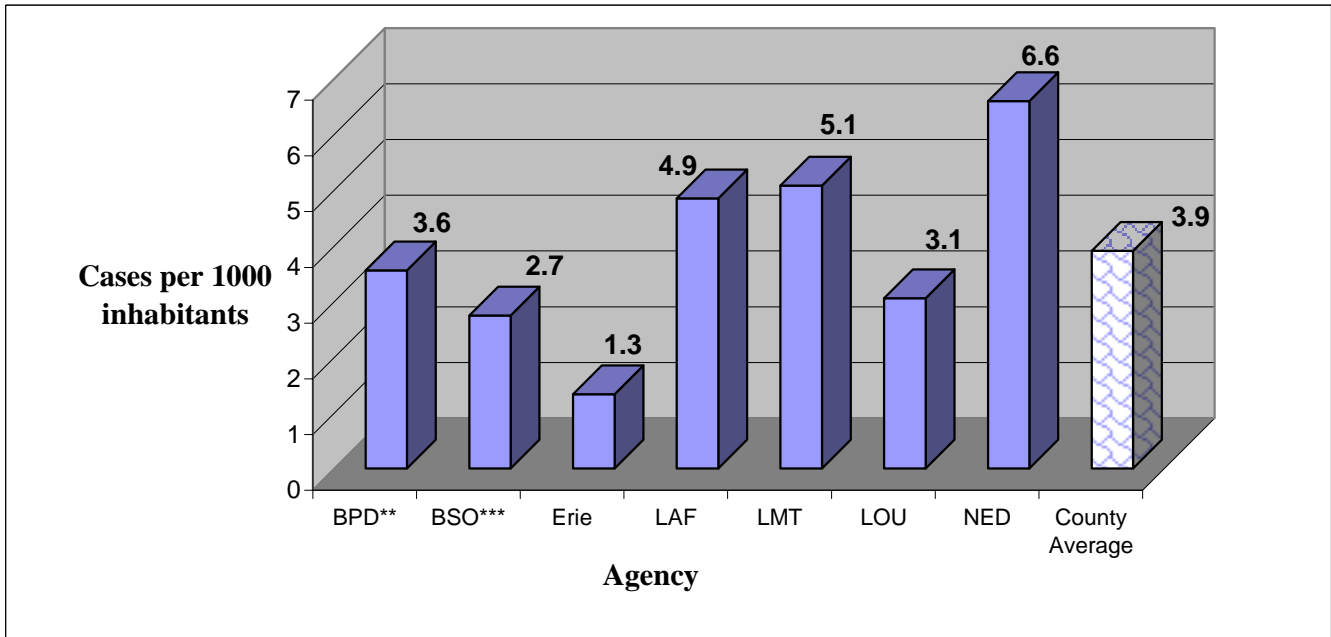


Figure 7

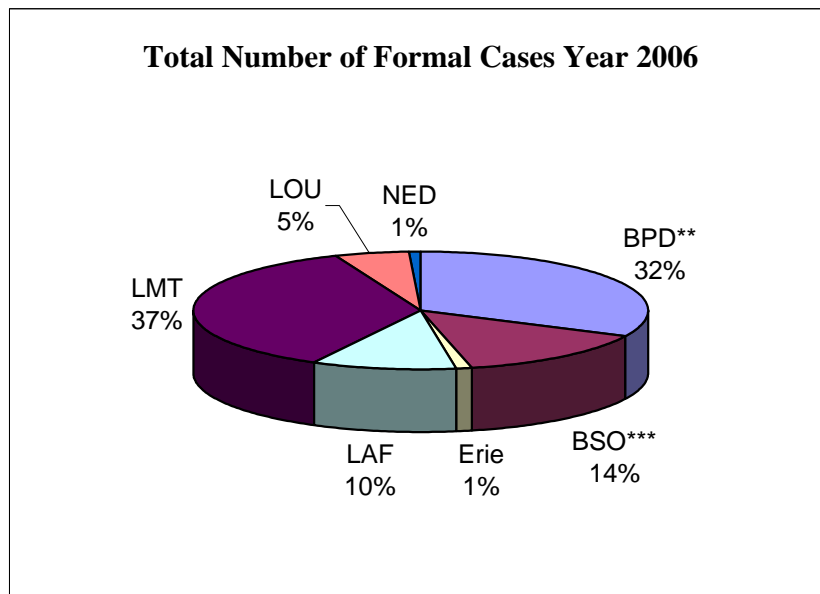


Figure 8

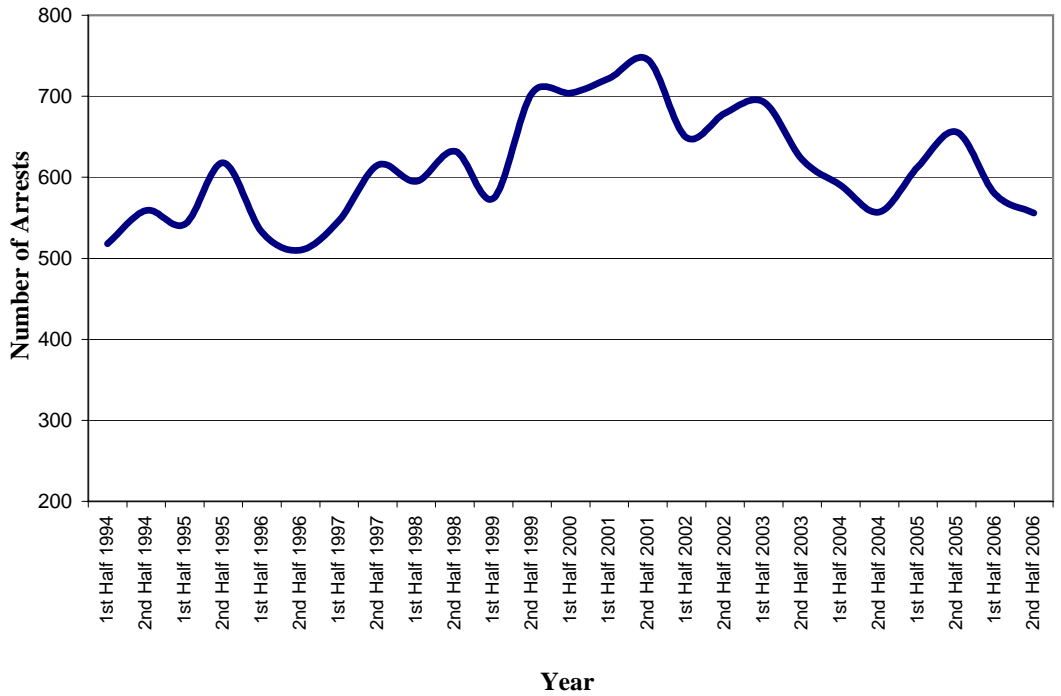
* The Population estimates were taken from the Boulder County Land Use Department.
<http://www.co.boulder.co.us/lu/demographics/index.htm>

** Boulder Police Department and University of Colorado Police Department were counted together based on available demographics.

*** For the purpose of our statistics, we included Jamestown, Lyons, Superior and unincorporated Boulder County to generate all numbers of inhabitants served by the Boulder County Sheriff's Office.

15 Year Overview of Boulder County Domestic Violence Arrest Rates*

**Boulder County Bi-Annual Domestic Violence Arrest Trend
1994 - 2006**



	# Arrests	Percent Change
1st Half 1994	518	
2nd Half 1994	559	8%
1st Half 1995	542	-3%
2nd Half 1995	618	14%
1st Half 1996	532	-14%
2nd Half 1996	510	-4%
1st Half 1997	547	7%
2nd Half 1997	615	12%
1st Half 1998	595	-3%
2nd Half 1998	632	6%
1st Half 1999	574	-9%
2nd Half 1999	704	23%
1st Half 2000	704	0%
2nd Half 2000	703	0%
1st Half 2001	722	3%
2nd Half 2001	745	3%
1st Half 2002	649	-13%
2nd Half 2002	679	5%
1st Half 2003	693	2%
2nd Half 2003	622	-10%
1st Half 2004	590	-5%
2nd Half 2004	557	-6%
1st Half 2005	613	10%
2nd Half 2005	656	7%
1st Half 2006	579	-12%
2nd Half 2006	556	-4%

Figure 9

**Boulder County Annual Domestic Violence Arrest Trend
1989 - 2006**

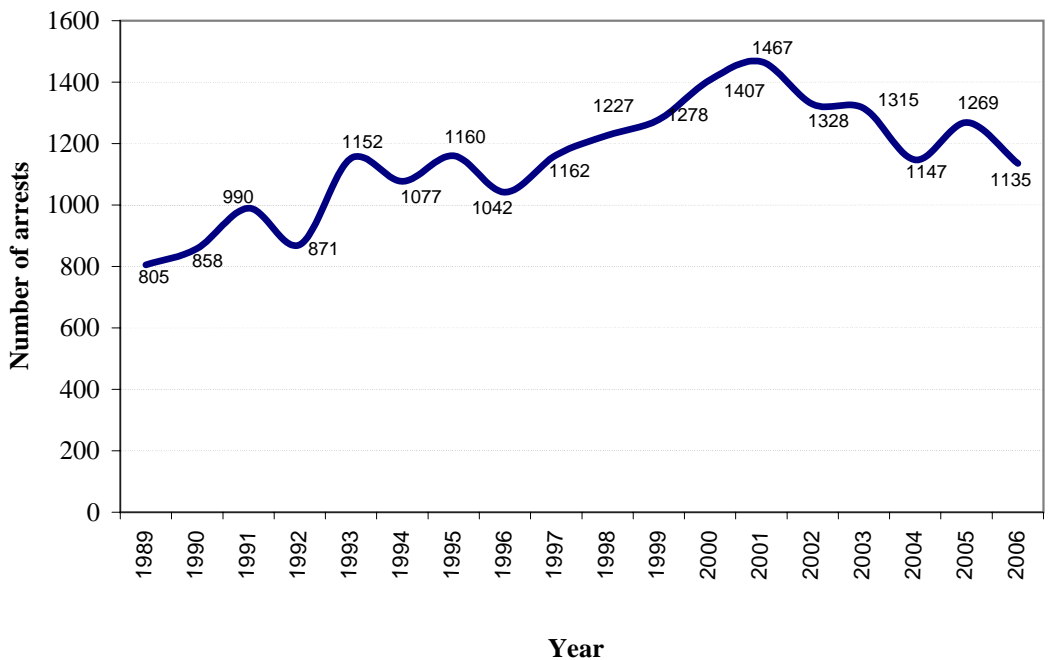


Figure 10

*Broomfield Law Enforcement Domestic Violence Numbers are included for the bi-annual and annual totals through 2001.