

# Coalton Trailhead

## LEGEND



Restrooms



Trailhead Parking



Picnic Shelter

**Multi-use Trail**  
Pedestrian, Equestrian, Bikes  
No E-bikes

**Regional Trail**

**City of Boulder Trail**  
No E-bikes

**Recreation Area**

**Active Agriculture**  
No Public Access

**Road**

## Connect

[www.BoulderCountyOpenSpace.org](http://www.BoulderCountyOpenSpace.org)

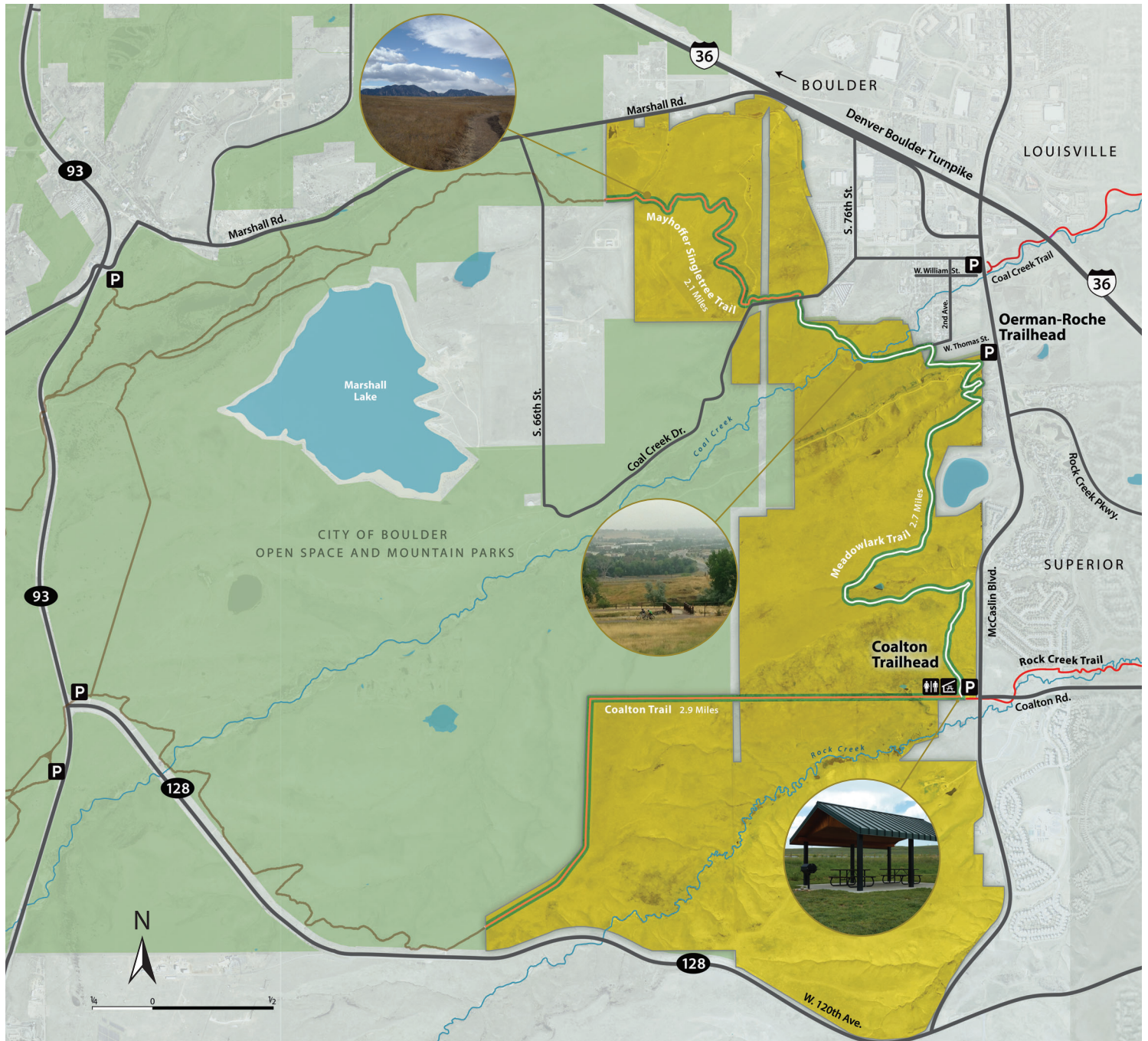
- maps and directions
- current trail conditions
- property information and photos
- current news and events
- download free GPS Trails App



facebook.com/BoulderCountyOpenSpace



@BoulderCountyOS



## TRAIL TIPS

- Keep the gates closed due to livestock in the area.
- All trail users must stay on trail due to active agriculture in the area.
- Since trail segments are managed by various municipalities, pay attention to changes in regulations.
- Be aware that this area is native rattlesnake habitat. Prairie rattlesnakes are often seen here March through October and, although they are not normally aggressive, they will strike when threatened. Keep dogs on leash at all times and if you see a rattlesnake, give it plenty of space.
- E-bikes are allowed on the Meadowlark Trail and on the Mayhoffer Singletree Trail south of Coal Creek Dr. E-bikes are prohibited on the Coalton Trail and the Mayhoffer Singletree Trail north of Coal Creek Dr.