

Heil Valley Ranch

LEGEND

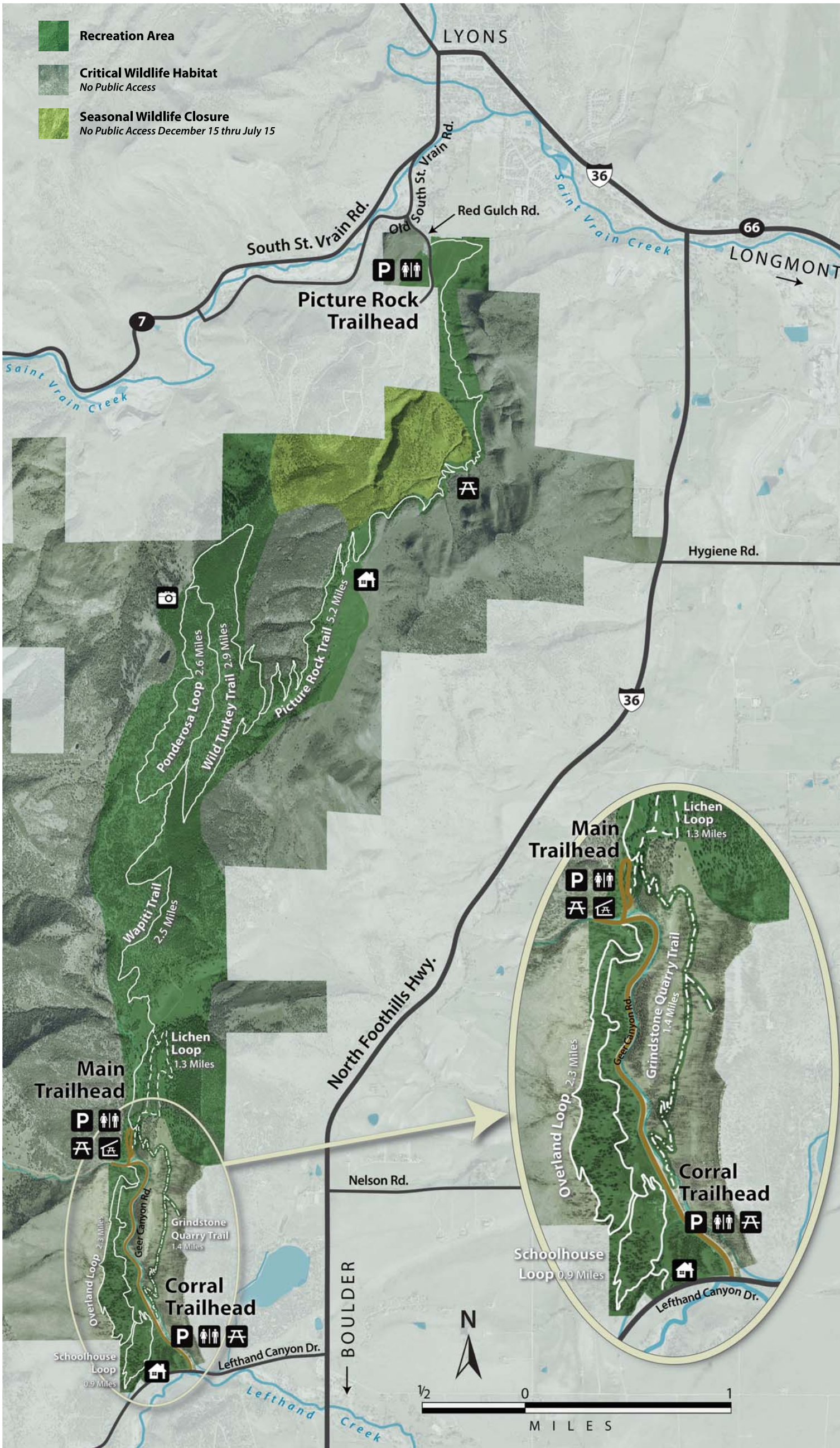
- Restrooms
- Picnic Table
- Trailhead Parking
- Scenic Overlook
- Picnic Shelter
- Historic Site

- Multi Use Trail (pedestrian, equestrian, bikes)
- Pedestrian Only Trail
- Pedestrian & Equestrian Only Trail (on trail use only)
- Paved Road
- Unpaved Road

DIRECTIONS

To Picture Rock Trailhead:
Access is from Highway 7, southwest of Lyons. Take Old St Vrain Road to Red Gulch Road.

To Main Trailhead and Corral Trailhead:
Access is from Highway 36, north of Boulder. Take Lefthand Canyon Drive to Geer Canyon Road.



Connect

www.BoulderCountyOpenSpace.org

- maps and directions
- current trail conditions
- property information and photos
- current news and events

facebook.com/BoulderCountyOpenSpace
 @BoulderCountyOS

TRAIL PROFILES

All loops are shown clockwise

