

# Pella Crossing

# Connect

## LEGEND



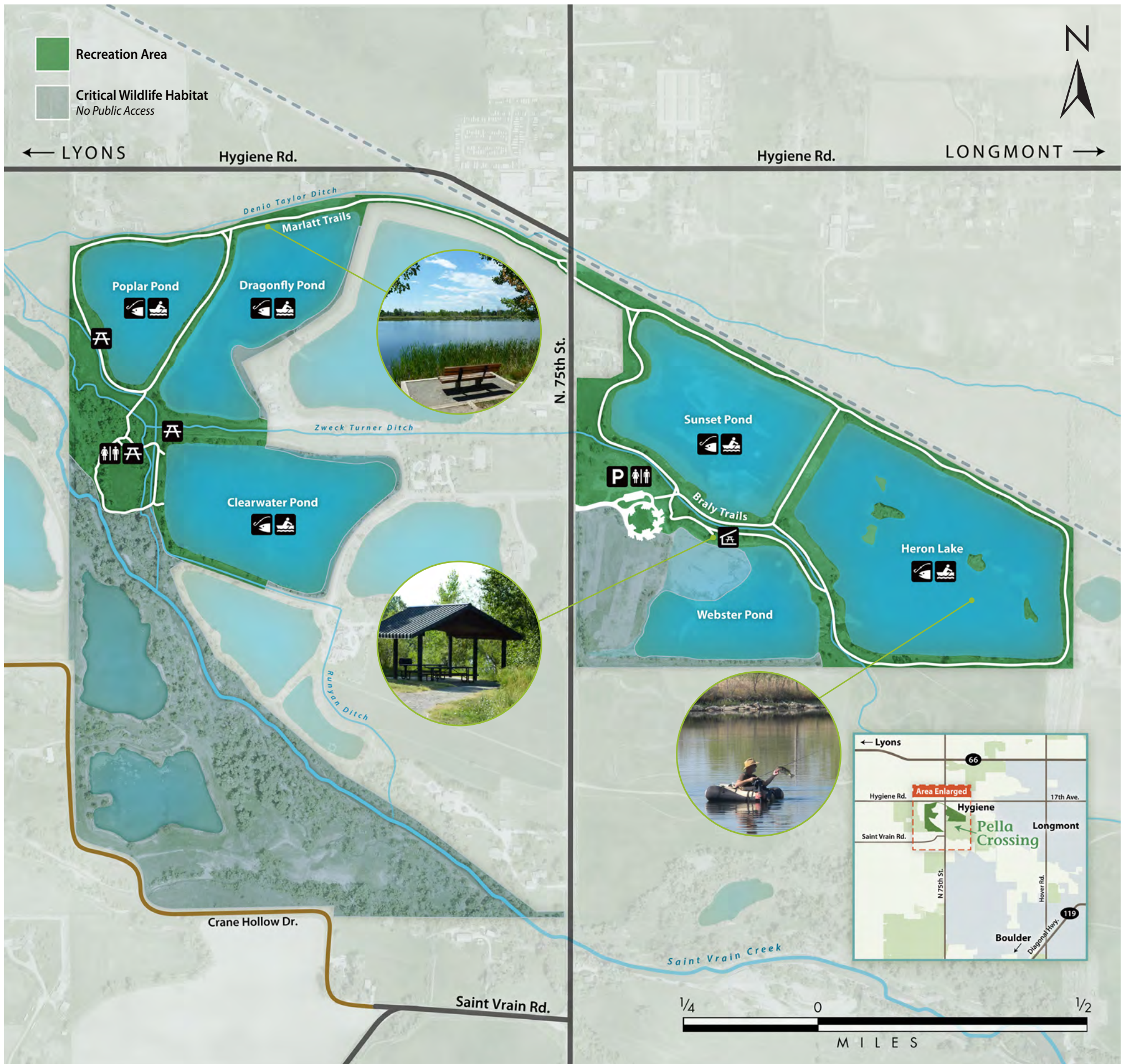
## LOCATION

Approximately one mile south of Hygiene on the east side of North 75th

[www.BoulderCountyOpenSpace.org](http://www.BoulderCountyOpenSpace.org)

- maps and directions
- current trail conditions
- property information and photos
- current news and events
- download free GPS Trails App

facebook.com/BoulderCountyOpenSpace  
 @BoulderCountyOS



## Fishing Regulations

- Only artificial flies and lures may be used; no live bait is permitted.
- All bass must be returned to the water immediately.
- Belly boats and non-motorized boats are permitted while fishing, except at Webster Pond where fishing is not allowed.
- A current Colorado State fishing license is required for any angler 16 years or older. Children 15 and younger may fish without a license.



## TIPS FOR RELEASING FISH BACK TO THE WATER

- Don't play a fish to exhaustion. Reel it in quickly.
- If a fish swallows a hook, cut the hook with needlenose pliers/cutters, removing both ends. You can also cut the line as close to the fish's mouth as possible, leaving the hook in the fish.
- When removing a hook, don't squeeze the fish or put your fingers in its gills.
- Handle a fish as little as possible. If you need to handle a fish, do it in the water. The longer a fish is out of water, the more damage occurs to its protective slimy body covering.
- To release a fish, hold it gently in the water. You may need to move it back and forth gently so it can regain its equilibrium.