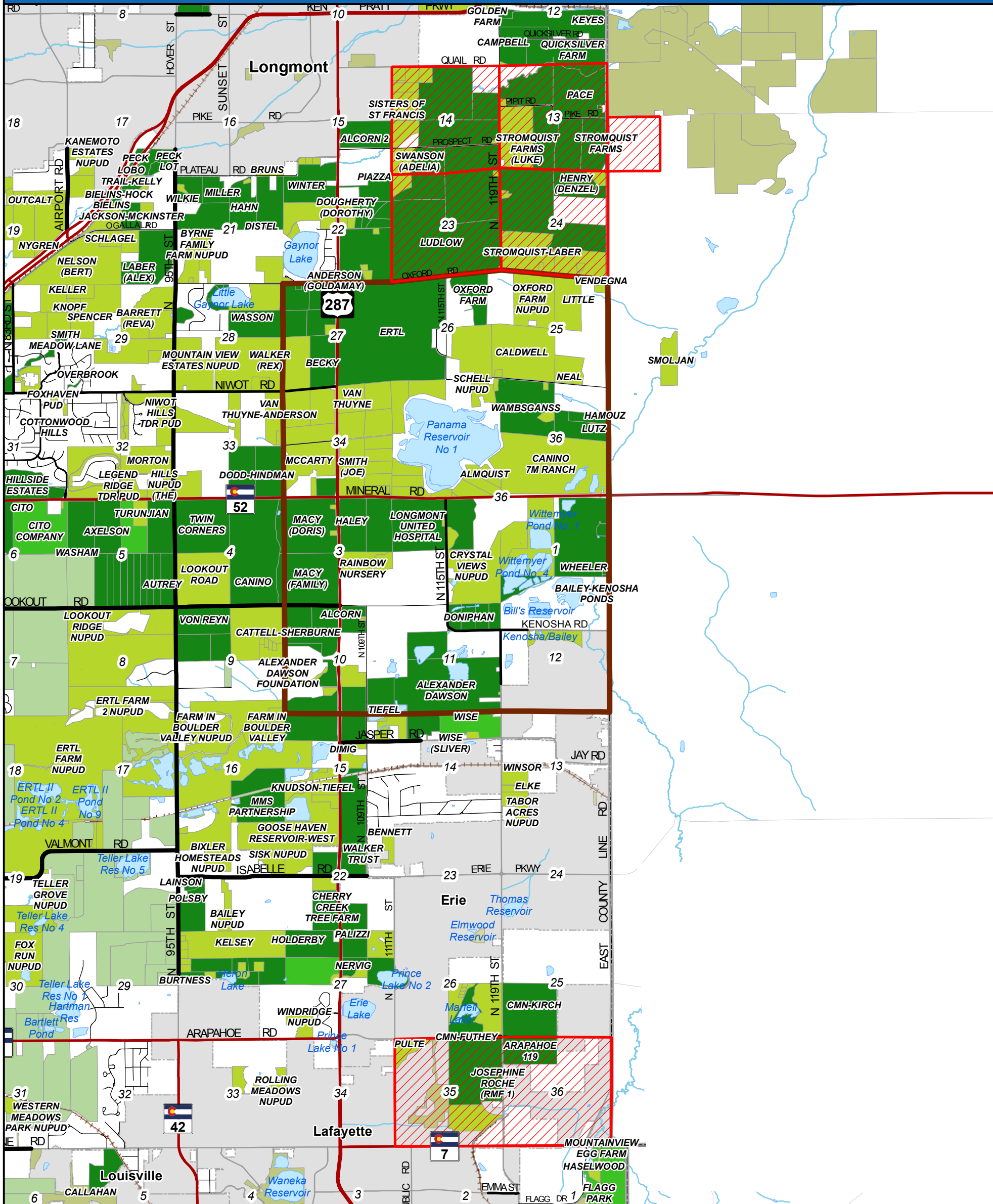




Boulder County Land Use Department

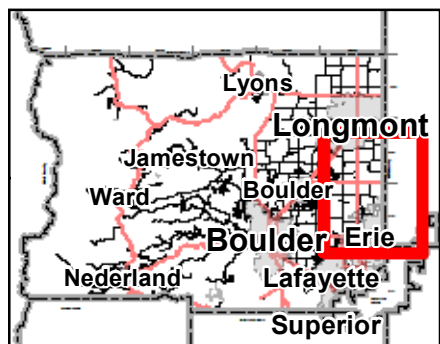
2045 13th Street, Boulder, CO 80302 303-441-3930 www.bouldercounty.org/lu

8North LLC Drilling & Spacing Order Applications

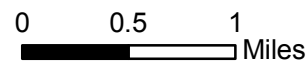


Legend

Area of Detail Date: 12/11/2017



- 8North LLC, Operator No. 10575
- Comprehensive Drilling Plan Area
- County Open Space
- Joint County/Municipal Open Space
- County Conservation Easement
- OSMP Properties
- Longmont Open Space
- Longmont Parks
- Other Municipal OS-BCPOS data
- Other Open Space



The user agrees to all Terms of Use set forth by Boulder County. For Terms of Use, please visit: www.bouldercounty.org/mapdisclaimer