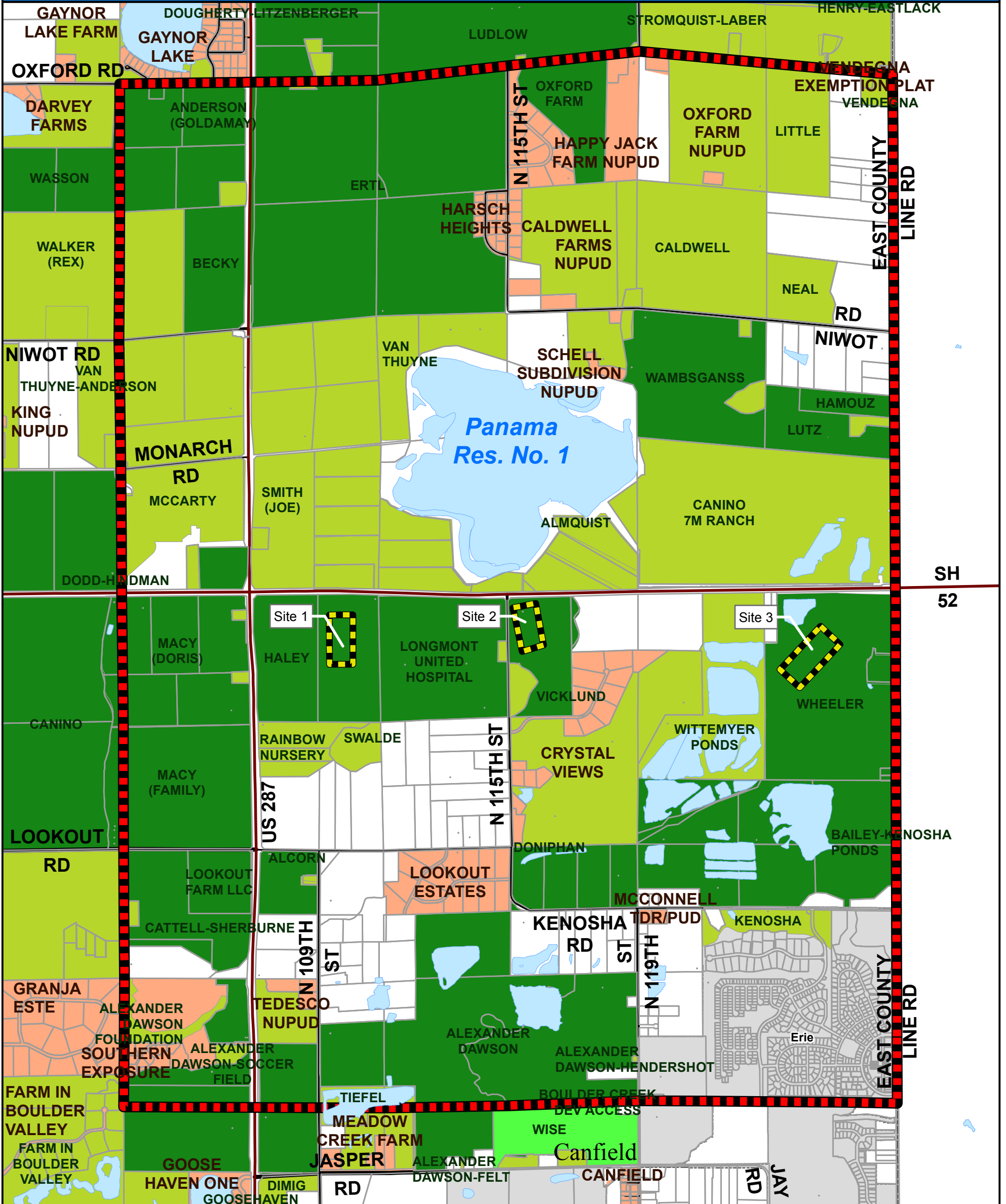




# Boulder County Land Use Department

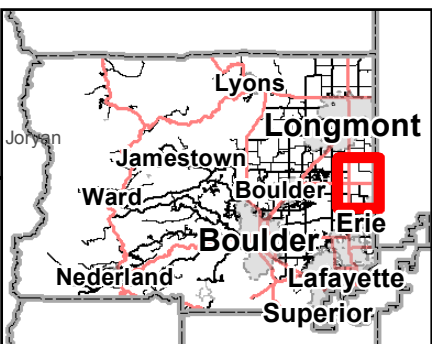
2045 13th Street, Boulder, CO 80302 303-441-3930 www.bouldercounty.org/lu

## Crestone CDP 3rd Draft 12/15/2017 - County Open Space



### Legend

Area of Detail Date: 12/21/2017



- Crestone CDP Area
- Drill Pad Site
- Subdivisions and Other Platted Areas
- Municipalities
- County Open Space
- Joint County and Municipal Open Space
- County Conservation Easement
- OSMP Properties



The user agrees to all Terms of Use set forth by Boulder County. For Terms of Use, please visit: [www.bouldercounty.org/mapdisclaimer](http://www.bouldercounty.org/mapdisclaimer)

Joryan