

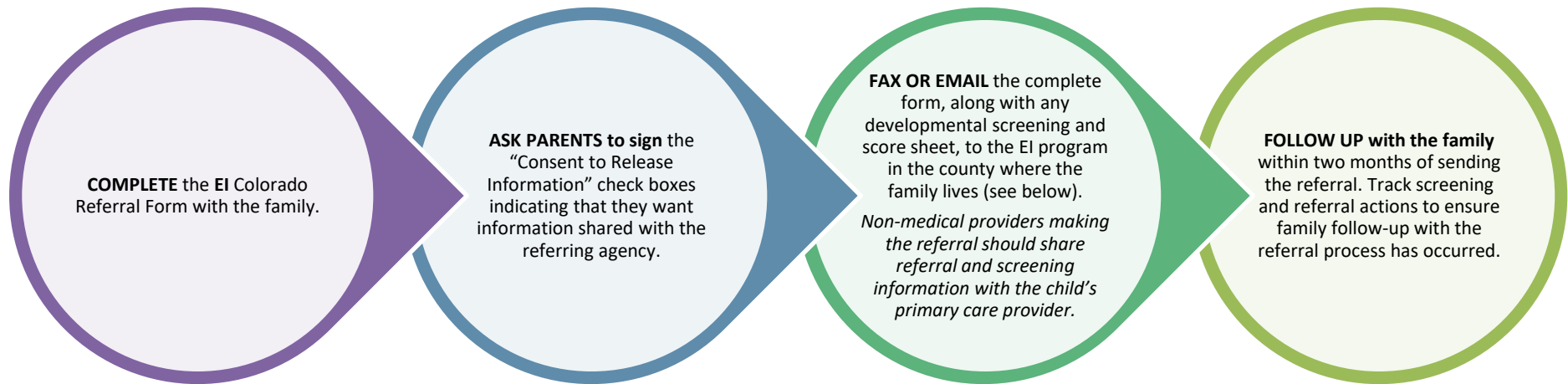
Boulder County Child Development Evaluation Referral and Follow-up Process



Children 0 – 3rd Birthday

Referral is made to a local program of **Early Intervention (EI) Colorado** based on the *county* the family lives in. Children referred will receive a multi-disciplinary evaluation and if a 25% or more delay is found in any of the five developmental domains, the child will qualify for services. Services will be provided at no cost to the family, and will occur in the child's home, utilizing an evidence-based Family Service model.

Referral Process



Early Intervention Colorado Providers

Boulder & Broomfield Counties – Imagine!

1400 Dixon Avenue
Lafayette, CO 80026-2790
Phone: 303-604-5424
Fax: 303-665-2648

Larimer County – Foothills Gateway

301 W. Skyway Dr.
Ft. Collins, CO 80525
Phone: 970-226-2345
Fax: 970-226-2613

Weld County – Envision

1050 37th Street
P.O. Box 200069
Evans, CO 80620-0069
Phone: 970-313-2629
Fax: 970-330-2261

Jefferson County – Developmental Disabilities Resource Center

11177 W. 8th Avenue Suite 300
Lakewood, CO 80215
Phone: 303-462-6650
Fax: 303-462-6697

Early Intervention/Child Find Responsibilities

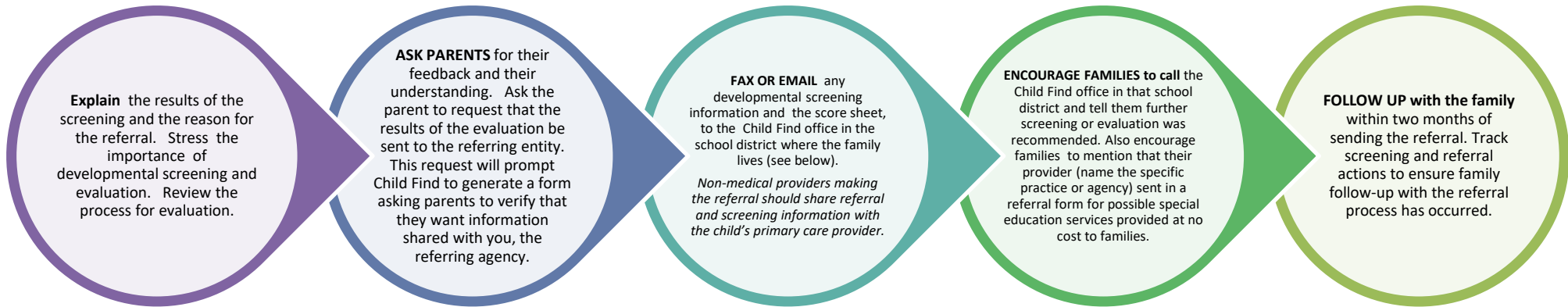
1. Early Intervention staff will make three attempts to contact the family (2 phone calls and 1 letter) to conduct an intake and offer an evaluation.
2. After the intake is complete, Child Find at the child's local school district will contact the family to schedule the evaluation at the Child Find office or the family's home. The evaluation will occur within 45 days of the referral, to determine if the child is eligible for services.
3. Early Intervention staff will send a Referral Status Update Form (RSUF) to the person who sent the referral and the assigned Service Coordinator.
4. With parental consent, a second RSUF will be sent after the evaluation is complete with the evaluation results.
5. If the child is eligible for services, an Individualized Family Service Plan (IFSP) will be written to detail the services to begin within 28 days of the initial meeting or consent date. Services will be provided in the home. A Service Coordinator will also be provided.



Children 3-5

Referral is made to the **Child Find** office in the *school district* the family lives in. Children referred will receive a screening or evaluation to determine eligibility. Eligibility is for early childhood special education services and is based on the delay impacting a child’s ability to succeed in an educational setting. Services are provided in a preschool classroom setting.

Referral Process



Child Find Offices

Boulder Valley School District
 6500 Arapahoe Rd.
 Boulder, CO 80303
 Phone: 720-561-5078
 Spanish: 720-561-5267
 Fax: 720-561-5142

St. Vrain Valley School District
 830 S. Lincoln St.
 Longmont, CO 80501
 Phone: 303-772-6649
 Fax: 303-651-3066 or 303-702-7800

Child Find Responsibilities

1. Child Find office will contact the family to schedule further screening or evaluation.
2. If the child has a documented delay that is educationally relevant (as determined by the evaluation team), they may attend preschool through the school district, as well as receive any additional services the child may need (speech therapy, occupational therapy, etc.).
3. If parents sign a “Release of Information” indicating that they want information shared with the referring agency, the school district will send screening or evaluation results.

October 2018

