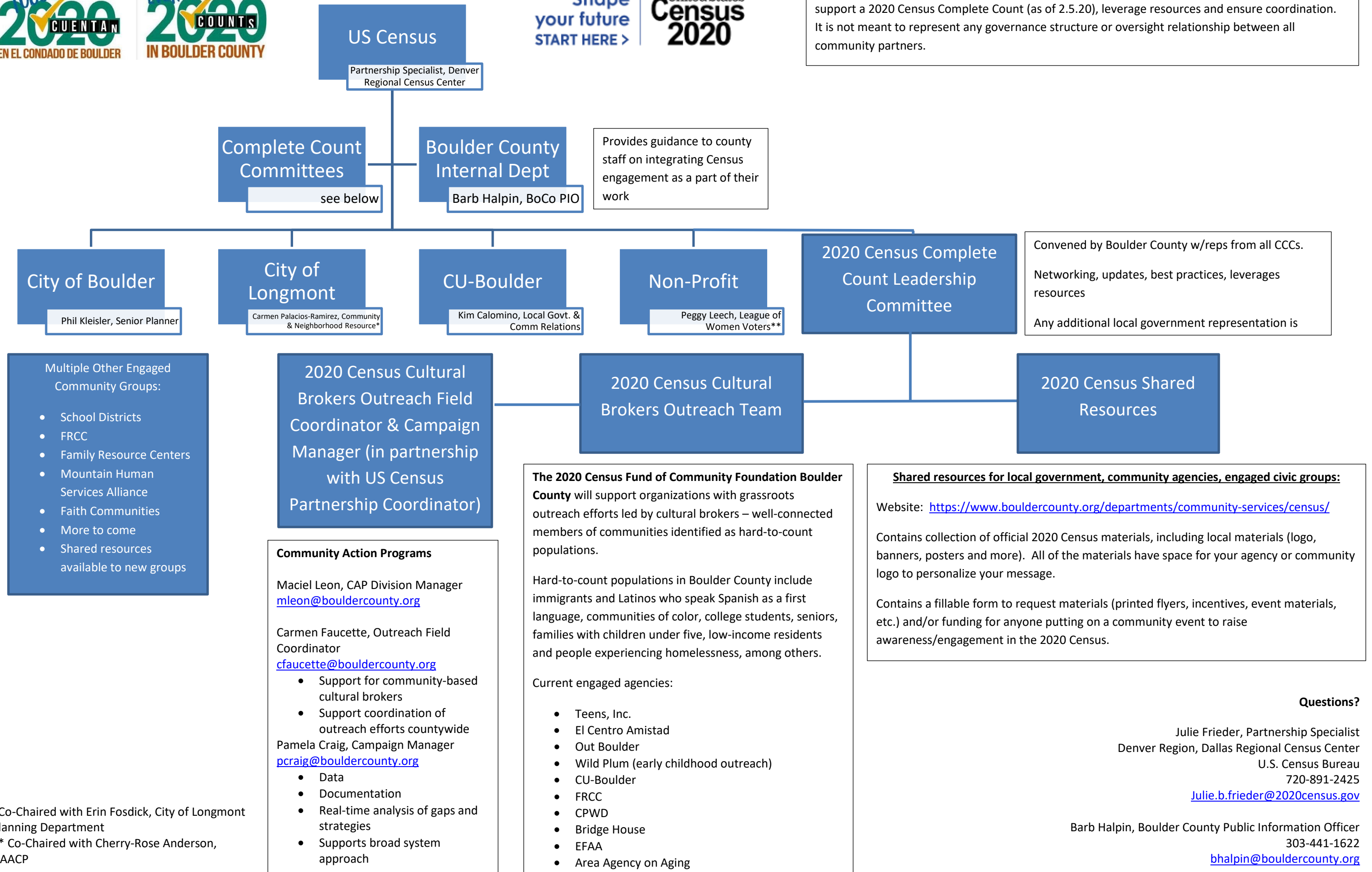




This graphic depiction is meant to provide awareness of the collaborative work that is underway to support a 2020 Census Complete Count (as of 2.5.20), leverage resources and ensure coordination. It is not meant to represent any governance structure or oversight relationship between all community partners.



Provides guidance to county staff on integrating Census engagement as a part of their work

Convened by Boulder County w/ reps from all CCCs. Networking, updates, best practices, leverages resources. Any additional local government representation is

- Multiple Other Engaged Community Groups:
- School Districts
  - FRCC
  - Family Resource Centers
  - Mountain Human Services Alliance
  - Faith Communities
  - More to come
  - Shared resources available to new groups

2020 Census Cultural Brokers Outreach Field Coordinator & Campaign Manager (in partnership with US Census Partnership Coordinator)

**Community Action Programs**

Maciel Leon, CAP Division Manager  
[mleon@bouldercounty.org](mailto:mleon@bouldercounty.org)

Carmen Faucette, Outreach Field Coordinator  
[cfaucette@bouldercounty.org](mailto:cfaucette@bouldercounty.org)

- Support for community-based cultural brokers
- Support coordination of outreach efforts countywide

Pamela Craig, Campaign Manager  
[pcraig@bouldercounty.org](mailto:pcraig@bouldercounty.org)

- Data
- Documentation
- Real-time analysis of gaps and strategies
- Supports broad system approach

**The 2020 Census Fund of Community Foundation Boulder County** will support organizations with grassroots outreach efforts led by cultural brokers – well-connected members of communities identified as hard-to-count populations.

Hard-to-count populations in Boulder County include immigrants and Latinos who speak Spanish as a first language, communities of color, college students, seniors, families with children under five, low-income residents and people experiencing homelessness, among others.

Current engaged agencies:

- Teens, Inc.
- El Centro Amistad
- Out Boulder
- Wild Plum (early childhood outreach)
- CU-Boulder
- FRCC
- CPWD
- Bridge House
- EFAA
- Area Agency on Aging

**Shared resources for local government, community agencies, engaged civic groups:**

Website: <https://www.bouldercounty.org/departments/community-services/census/>

Contains collection of official 2020 Census materials, including local materials (logo, banners, posters and more). All of the materials have space for your agency or community logo to personalize your message.

Contains a fillable form to request materials (printed flyers, incentives, event materials, etc.) and/or funding for anyone putting on a community event to raise awareness/engagement in the 2020 Census.

**Questions?**

Julie Frieder, Partnership Specialist  
Denver Region, Dallas Regional Census Center  
U.S. Census Bureau  
720-891-2425  
[Julie.b.frieder@2020census.gov](mailto:Julie.b.frieder@2020census.gov)

Barb Halpin, Boulder County Public Information Officer  
303-441-1622  
[bhalpin@bouldercounty.org](mailto:bhalpin@bouldercounty.org)

\*Co-Chaired with Erin Fosdick, City of Longmont Planning Department  
\*\* Co-Chaired with Cherry-Rose Anderson, NAACP