

# Child Care COVID-19 Decision Tree

## Protecting Staff and Children during the COVID-19 Pandemic

Exclude children and staff from Child Care for any of these reasons\*:

Have a positive COVID-19 test

OR

Have symptoms of COVID-19

OR

Are getting ill and think they might have COVID-19

\*Anyone with symptoms of COVID-19 should not be allowed in the building. This includes parents/guardians, siblings, visitors, etc.

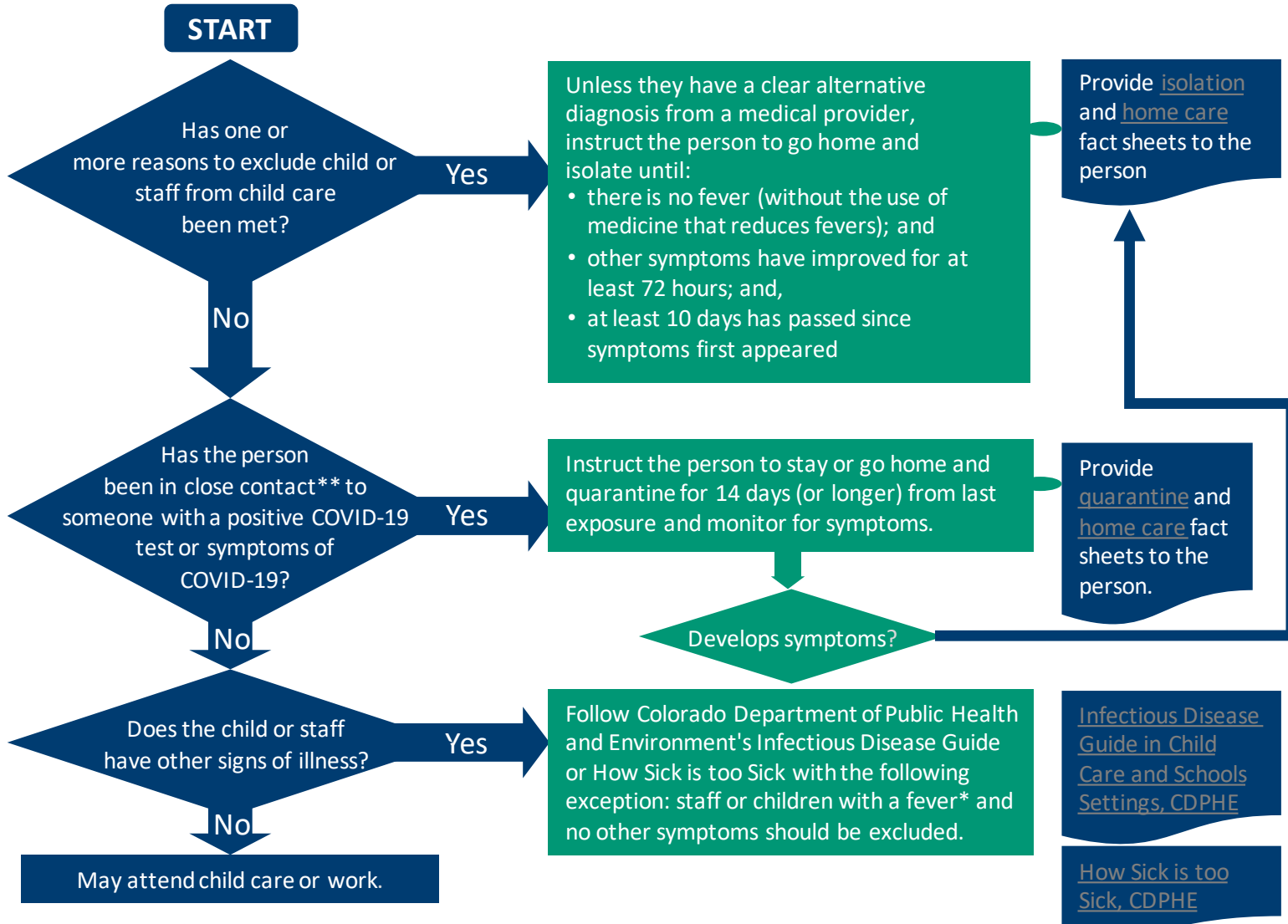
### General COVID-19 Symptoms

- Cough, Shortness of breath or difficulty breathing, Fever, Chills, Muscle pain, Sore throat, New loss of taste or smell. This list is not all inclusive. Other less common symptoms include gastrointestinal symptoms like nausea, vomiting, or diarrhea.

### COVID-19 Symptoms in Children

- Similar to adults; however, children generally show mild symptoms, including cold-like symptoms, such as fever, runny nose, and cough. Vomiting and diarrhea have also been reported.

Determine if children or staff should be at child care using this chart.



\*Fever is considered a body temperature of 100.4°F or higher.

\*\*Close contact is considered being within 6 feet of a person for 15 or more minutes.

# Child Care COVID-19 Decision Tree

## Protecting Staff and Children during the COVID-19 Pandemic

### Isolation vs Quarantine

#### Isolation if you are sick

Separates sick people with contagious disease from people who are not sick. You must stay away from others for at least 10 days after your symptoms started and until all your symptoms have gone away without fever reducing medicine.



#### Quarantine if exposed

Separates people and restricts their movement if they were exposed to a contagious disease to see if they become sick.



- For people who are not sick, but may have been exposed (in close contact) to someone who is sick.
- You must stay away from others for 14 days to see if you get sick.



### Resources for COVID-19 Child Care

- Clean and disinfect often using the Colorado Department of Public Health Environmental Cleaning Guidance for COVID-19 at <https://drive.google.com/file/d/1qWfwjCASKllqR0LpTm-jTDgPACTeHFOM/view>
- Review a 30-minute recorded webinar on environmental cleaning and disinfecting for COVID-19 at <https://healthychildcareco.org/policy-advocacy/ece-resources>
- Read more for School and Child Care Settings and How Sick is Too Sick from the Colorado Department of Public Health and Environments Infectious Disease Guide at [www.colorado.gov/cdphe/child-care](http://www.colorado.gov/cdphe/child-care)
- Get more information about COVID-19 in Colorado at [covid19.colorado.gov](http://covid19.colorado.gov)
- Review the Centers for Disease Control and Prevention guidance for child cares at [www.cdc.gov/coronavirus/2019-ncov/community/schools-childcare/guidance-for-childcare](http://www.cdc.gov/coronavirus/2019-ncov/community/schools-childcare/guidance-for-childcare)

Questions? Email [HEALTHCECOVID@bouldercounty.org](mailto:HEALTHCECOVID@bouldercounty.org)