

All Injury-Fatality Crashes in the Town of Lyons Area, 2009 to 2018



Source: Pinterest

The document reviews all Injury-Fatality crashes that occurred in the Town of Lyons and the surrounding area, from 2009 to 2018. Injury-Fatality Crashes incorporate crashes that range from injury level 2, or complaint of injury, to injury level 5, or a fatal crash.

The first map in the document displays all Injury-Fatality crashes that occurred in the Lyons area from 2009 to 2018, by severity level. 66% of the Injury-Fatality crashes (101 of 154 total) in the area shown on the map did not take place at an intersection. The next map displays all Injury-Fatality crashes from 2009 to 2018, by crash type. Single-vehicle crashes are the most common crash type, and rear end crashes rank as the next most frequent crash types.

Crash Severity Levels

The crash severity of a crash is determined by law enforcement and recorded as part of the tabular data on an Accident Report Form. There are five levels of crash severity, determined by the most serious injury resulting from a crash:

Injury Level 1= Property Damage Only

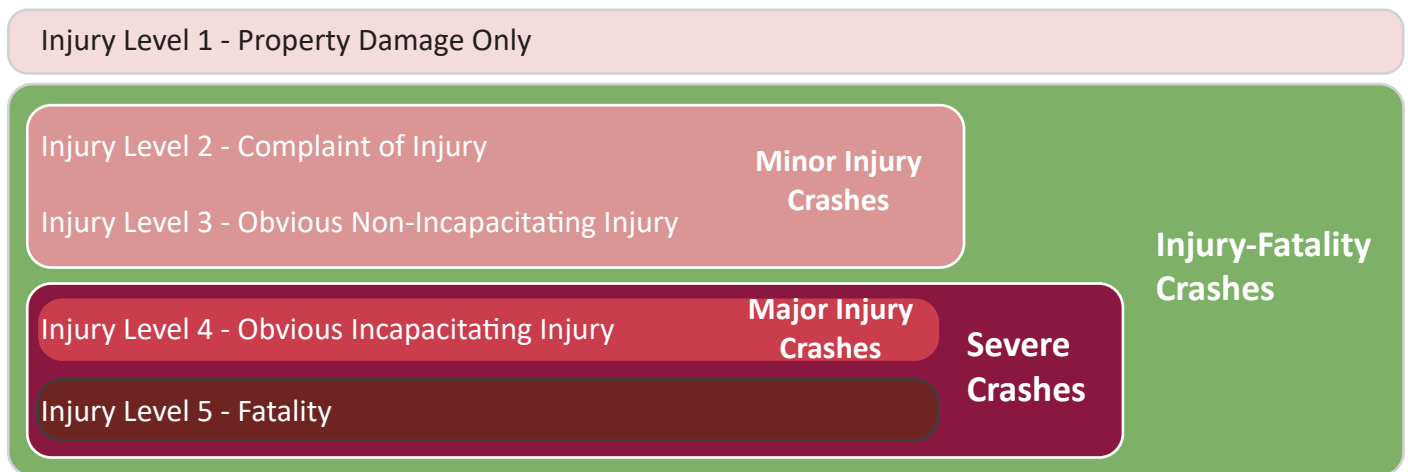
Injury Level 2= Complaint of Injury

Injury Level 3= Obvious Non-Incapacitating Injury

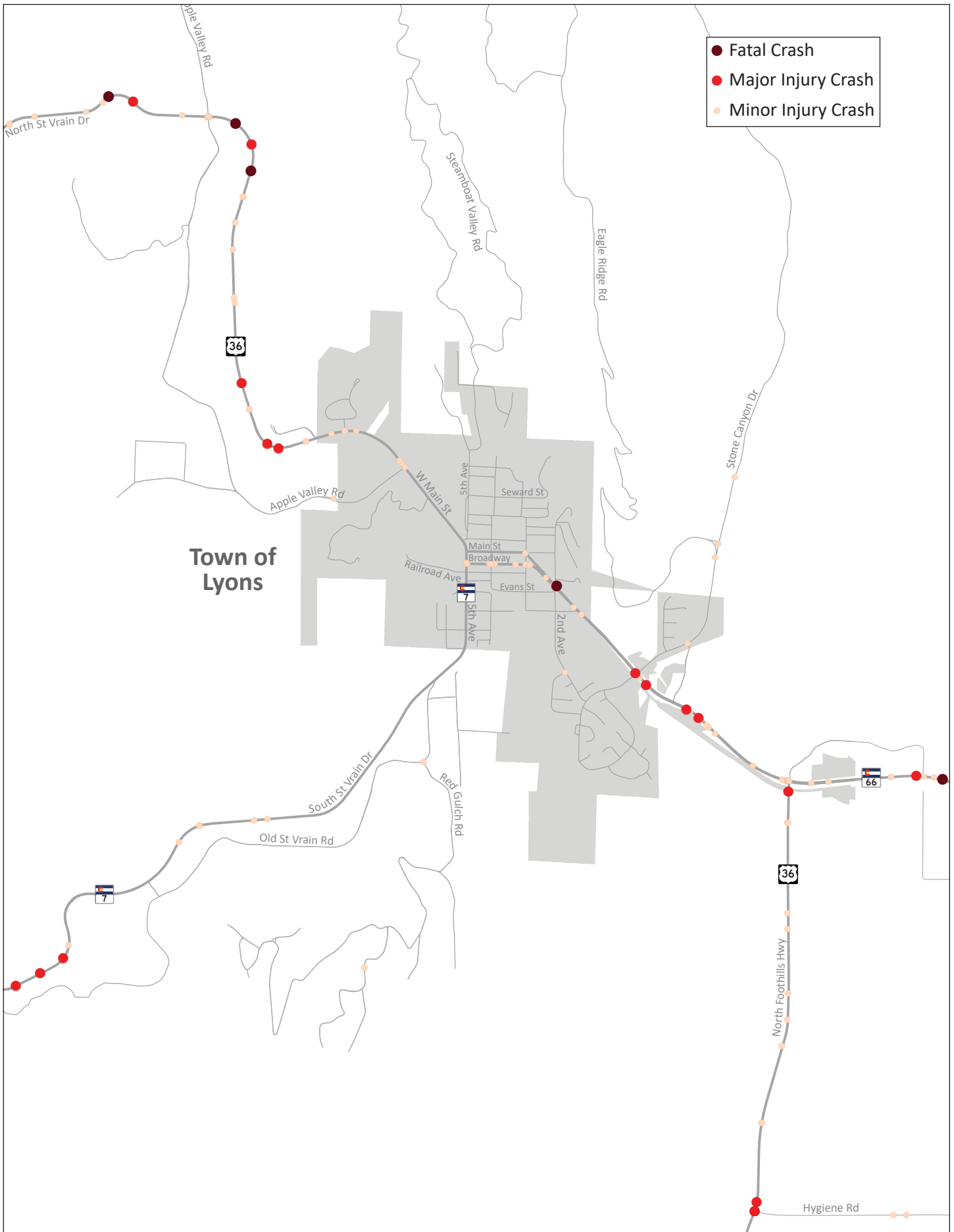
Injury Level 4= Obvious Incapacitating Injury

Injury Level 5= Fatality

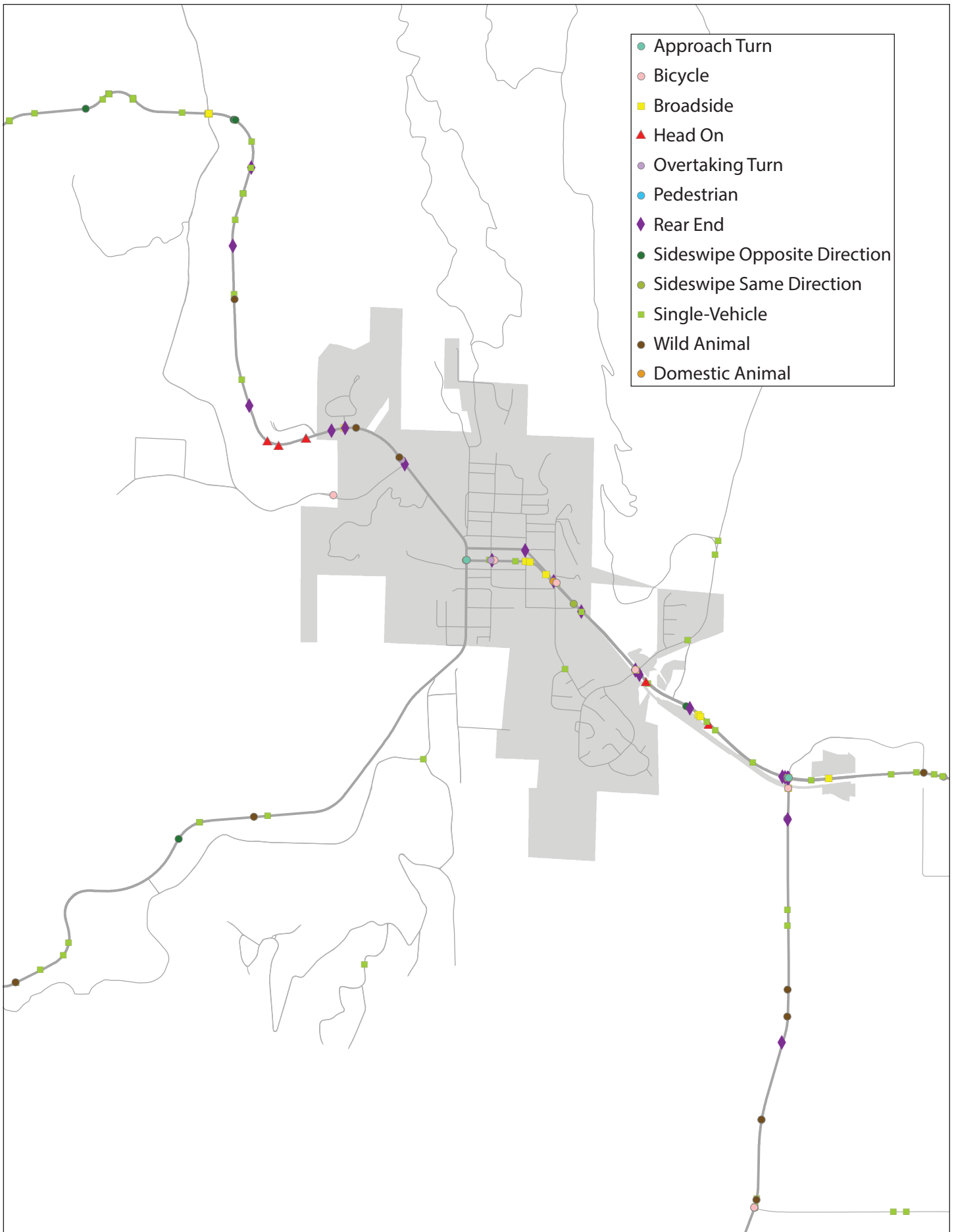
Throughout the document, we will refer to four levels of crash severity:



All Injury-Fatality Crashes in Town of Lyons Area, 2009 to 2018, by Severity



All Injury-Fatality Crashes in Town of Lyons Area, 2009 to 2018, by Crash Type



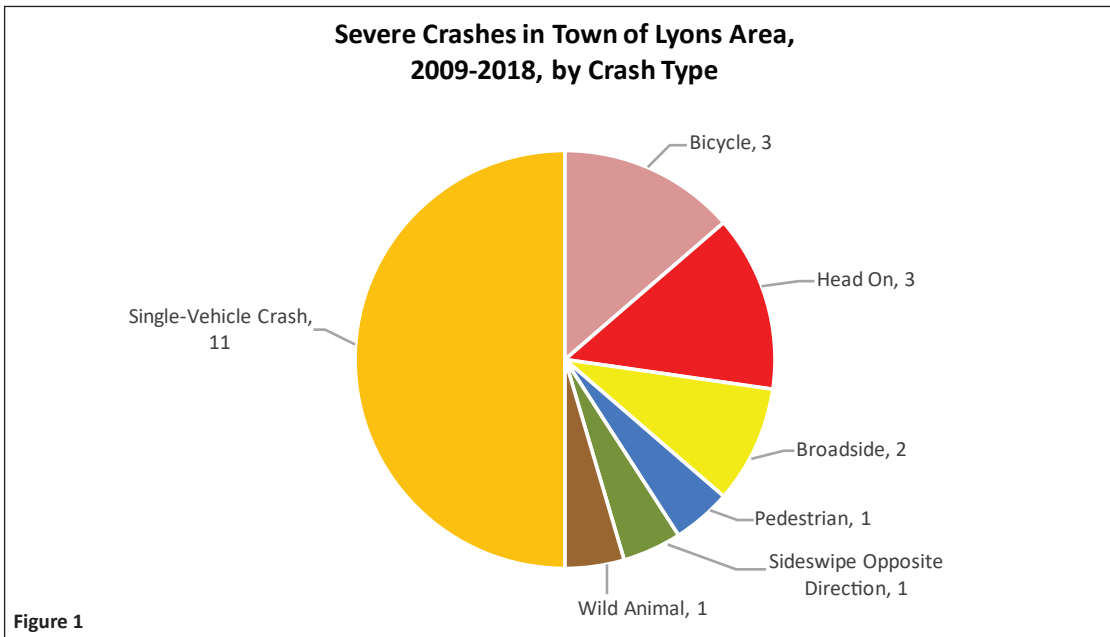


Figure 1 displays all Severe Crashes in the Lyons area shown on the maps previously displayed from 2009 to 2018. Of the 22 Severe crashes that occurred, 50% (11 of 22 total) are single-vehicle crashes. The remaining Severe crashes are a handful of other crash types.

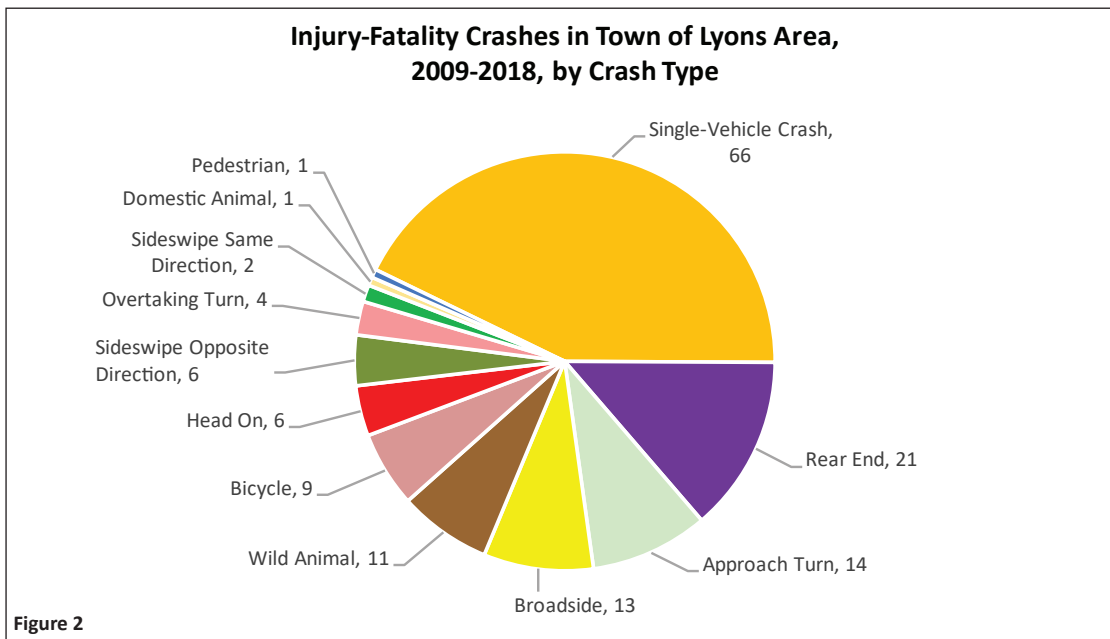


Figure 2 displays all Injury-Fatality Crashes in the Lyons area shown on the maps. 56% of the Injury-Fatality crashes are single-vehicle or rear end crashes (87 of 154). Approach turn, broadside, and wild animal crashes were also common in the Lyons area from 2009 to 2018.