

East Lafayette Advisory Committee (ELAC)

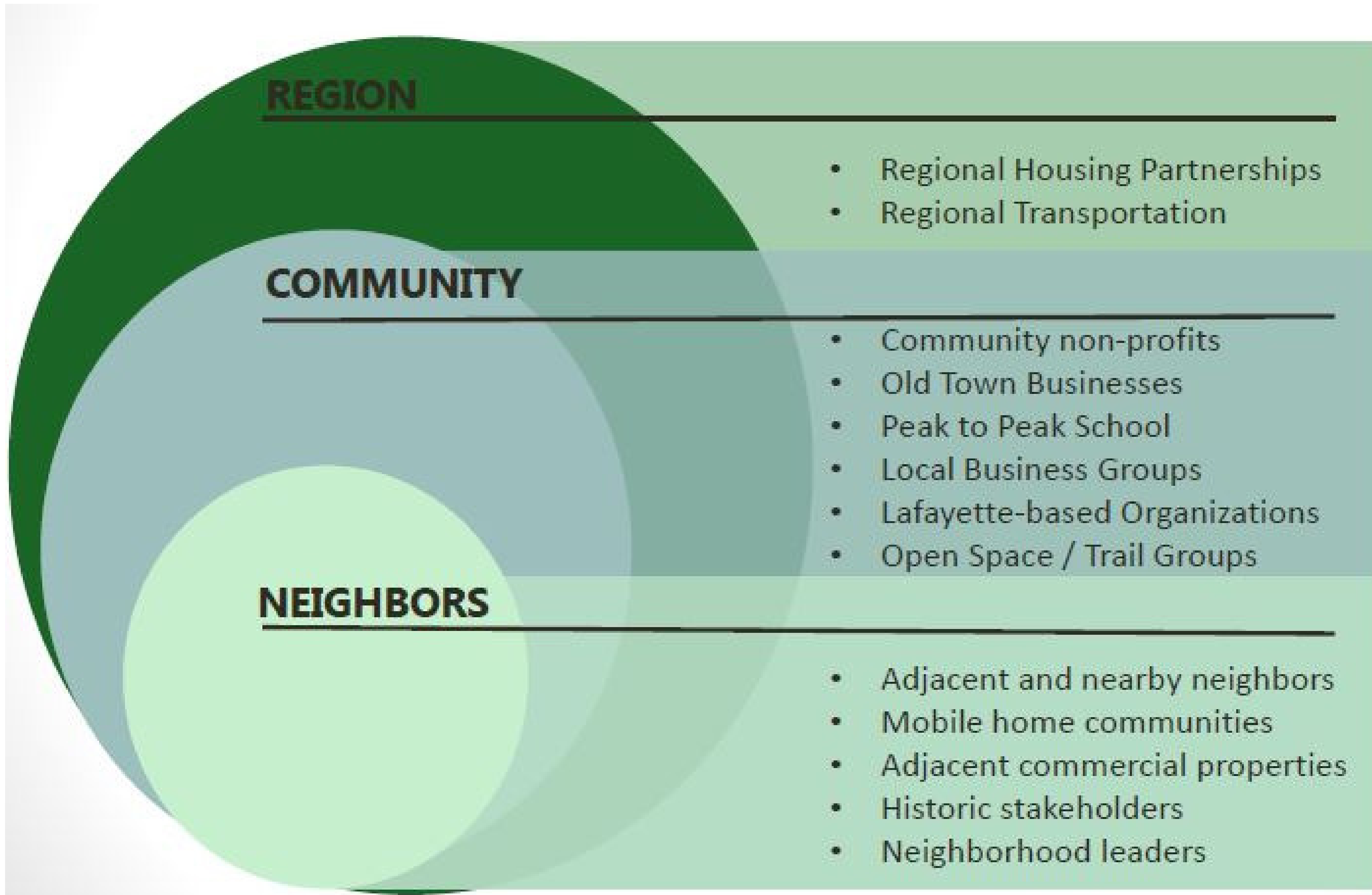
The East Lafayette Advisory Committee (ELAC) is a community group of area residents and stakeholders who will advise Boulder County Housing Authority staff in implementing an inclusive and effective community engagement plan. ELAC will ensure that the creation of affordable housing at East Emma and 120th is a true community enhancement.

The ELAC is comprised of approximately 11 community members that represent the diverse interests of Lafayette. Each member organization will self-select a representative and an alternate to serve on the ELAC.

MEMBER ORGANIZATIONS

- 1 Old Town
- 2 Flagg Drive Neighbors
- 3 Arbordale Acres
- 4 Southern Edge Neighbors
- 5 Emma Street Neighbors
- 6 Peak to Peak
- 7 Local Business
- 8 Senior Advisory Board
- 9 Livable Lafayette
- 10 Non-Profit Representative
- 11 At-Large Representative

Our Initial Approach to Community Engagement



OUR PRINCIPLES

- Listen, Then Draw
- Our initial outreach focused on adjacent neighbors & stakeholders
- Hosted Meet & Greet to introduce the team
- Listen: How to structure community outreach
- Listen: How to have a community planning process
- Initiation of community compromise