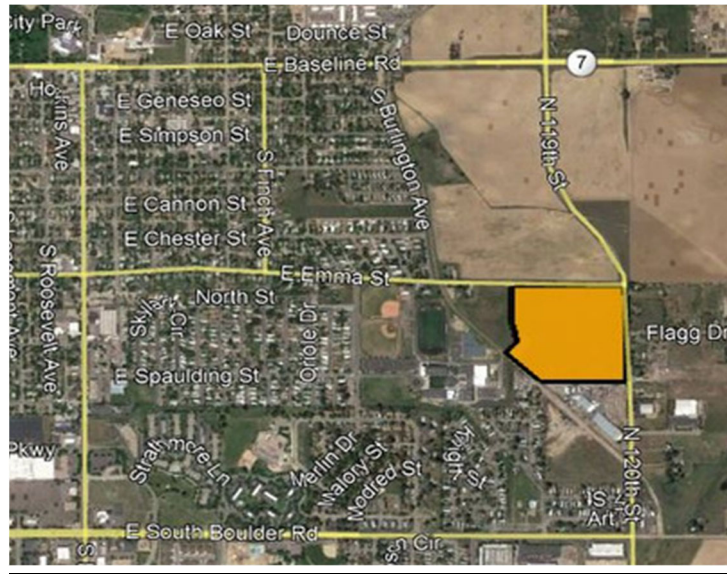


Willoughby Corner Neighborhood Meeting



Please join the Boulder County Housing Authority (BCHA) on December 15, 2021 for a virtual neighborhood meeting to discuss Willoughby Corner, the planned community of workforce housing located at the intersection of East Emma Street and 120th Street in Lafayette.

BCHA is in the process of submitting an application for a Planned Unit Development that proposes 400 permanently affordable homes in a variety of building types including duplexes, townhomes, apartments as well as significant public amenities. In addition to the housing, the 24-acre neighborhood will include community gardens, a community building, dog park, trails and park space. Representatives from BCHA as well as the City of Lafayette will be at the meeting to answer questions and provide information.

When: Wednesday, December 15th from 5:30 pm – 7:00 pm

Meeting Link:

www.t.ly/DQEG

Call in number: 669-900-6833

Meeting ID: 833-0885-6818



BCHA Contact:

Molly Chiang, Senior Housing Development Project Manager

Email: MChiang@BoulderCounty.org

Phone: (607) 275-1786

City Planner:

Millissa Berry, Senior City Planner

Email: Millissa.Berry@lafayetteco.gov

Phone: (303) 661-1463

For more information, please visit www.WilloughbyCorner.org

or cityoflafayette.com/2333/Emma-120th-St